



Milson, 6 Grange Place

Spacious Family Living in a Prime Location!

DEADLINE SALE 16.04.25 (UNLESS SOLD PRIOR)

Designed with family living in mind, this 203m² home offers the perfect combination of space, functionality, and convenience. Whether you're looking for multiple living areas, extra accommodation, or effortless indoor-outdoor flow, this home ticks all the boxes!

Open plan lounge and dining area which flows through to an open plan Kitchen and family room. These space gives great flexible living options.

Four spacious bedrooms, including a master suite with walk-in robe and en-suite

Sleepout with its own bathroom and external access - ideal for a teenager's retreat, home office, or hobby room.



For Sale

Deadline Sale Closes 16.04.25 (unless sold prior)

View

Sun 30th Mar @ 2:00PM - 2:30PM

Contact

Jeannie Boswell

027 445 3048

jeannie@jeannieboswell.co.nz



Disclaimer: All information contained therein is gathered from relevant third parties sources.

We cannot guarantee or give any warranty about the information provided. Interested parties must rely solely on their own enquiries.

LJ Hooker Palmerston North

(06) 358 9009

Manawatu (1994) Ltd

Family bathroom consisting of shower, bath and vanity.

Separate laundry for everyday convenience

Private, sun-soaked deck - the perfect spot for outdoor dining and entertaining

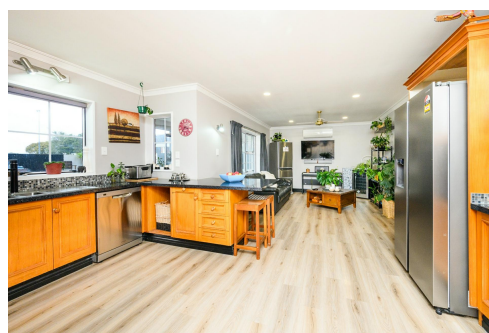
Fully fenced back section - safe for kids and pets

Enclosed carport offering secure parking

Unbeatable Location with St. Peter's College right at your back gate, Milson shops close by and Palmerston North Hospital only minutes away.

Situated in a quiet cul-de-sac, offering peace and privacy

This home is a rare find in such a sought-after location. Don't miss your chance - call Jeannie Boswell.



More About this Property

Property ID	WG1GFB
Property Type	House
House Size	203 m ²
Land Area	649 m ²

Licensed Real Estate Agents (REAA2008)

Jeannie Boswell 027 445 3048

Marketing Consultant | jeannie@jeannieboswell.co.nz

LJ Hooker Palmerston North (06) 358 9009

Manawatu (1994) Ltd

219 Broadway Avenue, PALMERSTON NORTH 4414

palmerstonnorth.ljhooker.co.nz | reception@ljhookerpn.co.nz



Disclaimer: All information contained therein is gathered from relevant third parties sources.

We cannot guarantee or give any warranty about the information provided. Interested parties must rely solely on their own enquiries.

LJ Hooker Palmerston North

(06) 358 9009

Manawatu (1994) Ltd