



Millner, 2/6 Belle Place

Great value and low running costs.

* Access via 17 Kelsey Crescent.

Millner is one of the Northern suburbs best kept secrets in terms of location and convenience. Within 1 km of this property is the Nightcliff Woolworths shopping center, Jape Homemaker Village, The Nightcliff Markets, The Rapid Creek Markets and the Jingili Water Gardens. Furthermore, it is a short 2 minute drive to the Nightcliff foreshore and easy access to both Bagot and Trower roads to either head into the city or out to Casuarina.

The property itself has just received a number of improvements including a fresh coat of paint and new carpets throughout. A number of light fittings have also been updated to create a more modern feel inside the property. The kitchen is a good size and includes plenty of storage and is open plan with the living and dining area. The property also has access to a small yard which is perfect for those with a green thumb or just want some



For Sale
\$255,000

View
ljhooker.com.au/5D8CF2X

Contact
Jennifer Wardell
0447 007 474
jwardell@ljhookerdarwin.com.au

Robert Higgins
0418 184 754
rhiggins@ljhookerdarwin.com.au



LJ Hooker Darwin
(08) 8924 0900

Disclaimer: All information contained therein is gathered from relevant third parties sources. We cannot guarantee or give any warranty about the information provided. Interested parties must rely solely on their own enquiries.

extra space.

Features include:

- * Recently updated and in great condition
- * Super convenient location
- * Kitchen includes plenty of storage
- * Air conditioned bedrooms and living area
- * Off street parking for 1 car

The property comes with 1 car space which is located right at the front door of the unit for added convenience and with the unit located on the ground floor, loading and unloading the car is simple. There is also an internal laundry which is super handy and includes the washing machine and clothes dryer as well as the microwave in the kitchen. This is a great property, is well located and ready to move in, it won't last long. Make contact to book your appointment.

Area under title: 79m² (approx)

Body Corporate Manager: Whittles Body Corporate.

Body Corporate Fees: \$964 per quarter (approx)

Council Rates: \$1,600 per year (approx)

Status: Ready to move in

More About this Property

Property ID	5D8CF2X
Property Type	Unit
Land Area	79 m2
Including	Air Conditioning

Jennifer Wardell 0447 007 474

Sales Representative | jwardell@ljhookerdarwin.com.au

Robert Higgins 0418 184 754

Project Planning and Marketing | rhiggins@ljhookerdarwin.com.au

LJ Hooker Darwin (08) 8924 0900

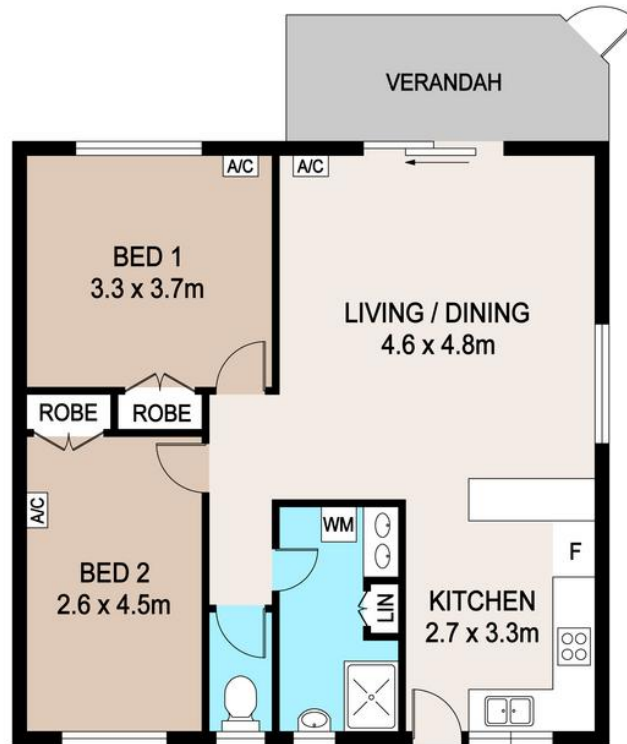
Shop 1/25 Parap Road, PARAP NT 0820

darwin.ljhooker.com.au | reception@ljhookerdarwin.com.au



LJ Hooker Darwin
(08) 8924 0900

Disclaimer: All information contained therein is gathered from relevant third parties sources. We cannot guarantee or give any warranty about the information provided. Interested parties must rely solely on their own enquiries.



2/6 BELLE PLACE, MILLNER

DISCLAIMER

PLANS SHOWN ARE FOR MARKETING PURPOSES ONLY. ALL DIMENSIONS ARE APPROXIMATE AND NOT TO SCALE. THEY ARE SUBJECT TO ERRORS AND INACCURACIES AND NO LIABILITY WILL BE ACCEPTED. INTERESTED PARTIES SHOULD MAKE THEIR OWN INQUIRES.