

## Millbridge, 8 Adeline Drive

### Elegant Family Living in Sought-After Millbridge

Step into this beautifully built 2015 Ventura home, where quality craftsmanship meets modern living. Perfectly positioned on a spacious 713m<sup>2</sup> corner block in the prestigious Millbridge Estate, this impressive property offers over 230m<sup>2</sup> of living space and is packed with thoughtful features designed for comfort and style.

No detail has been overlooked in this 4-bedroom, 2-bathroom residence. The sleek and sophisticated kitchen is at the heart of the home, boasting ample storage, a huge walk-in pantry, and top-quality fixtures. Overlooking the open-plan living area, it seamlessly flows out to the beautifully decked alfresco, perfect for entertaining and enjoying the surrounding garden.

This home's expansive layout is ideal for families, offering generous living spaces including a kids activity room, study, and a private theatre room. With high ceilings and ducted reverse-cycle air conditioning throughout, you'll stay comfortable all year round.

4 2 2

**For Sale**  
Offers Over \$825,000

**View**  
[ljhooker.com.au/16H0HND](http://ljhooker.com.au/16H0HND)

**Contact**  
**Rebecca Maskell**  
0437 085 992  
[rebecca.maskell@ljsouthwest.com.au](mailto:rebecca.maskell@ljsouthwest.com.au)



**Disclaimer:** All information contained therein is gathered from relevant third parties sources. We cannot guarantee or give any warranty about the information provided. Interested parties must rely solely on their own enquiries.

**LJ Hooker Property South West WA**  
**(08) 9791 6880**

#### Standout Features:

- 4 spacious bedrooms, complete with stylish shutters and domain blinds
- Master suite with his-and-hers robes and a luxurious double shower in the ensuite
- Double mirrored robes in all minor bedrooms
- Sleek, modern kitchen with high-quality finishes
- Dedicated theatre room, kids' activity area, and study
- Reverse-cycle air conditioning and high ceilings throughout
- Impressive decked alfresco, perfect for outdoor entertaining
- Laminate flooring in main areas, with plush carpets in the bedrooms and theatre room
- Premium window treatments and modern downlights throughout
- Plenty of storage options, including a walk-in storeroom
- Security cameras installed for peace of mind
- Side access to the large backyard and a massive 6.2 x 5.4m workshop

This home offers the perfect combination of elegance, functionality, and style, providing everything you need for modern family living. Don't miss out on this incredible opportunity in one of Millbridge's most sought-after locations!

Disclaimer: Whilst every care has been taken in the preparation of this advertisement and the approximate outgoings, all information supplied by the seller and the seller's agent is provided in good faith. Prospective purchasers are encouraged to make their own enquiries to satisfy themselves on all pertinent matters. Images are for illustrative purposes.

## More About this Property

Property ID	16H0HND
Property Type	House
House Size	232 m <sup>2</sup>
Land Area	714 m <sup>2</sup>

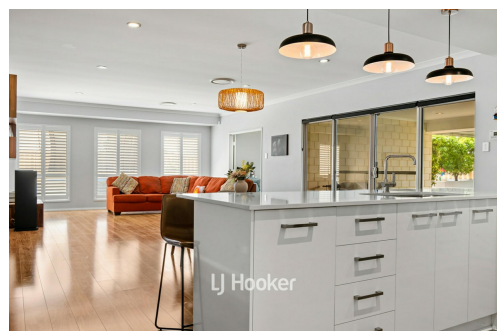
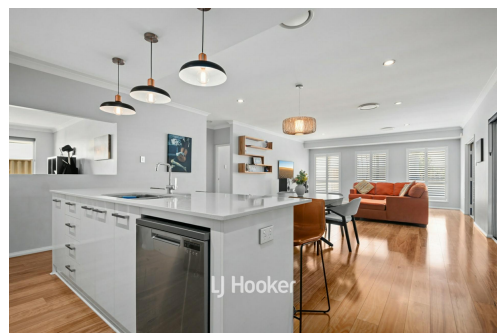
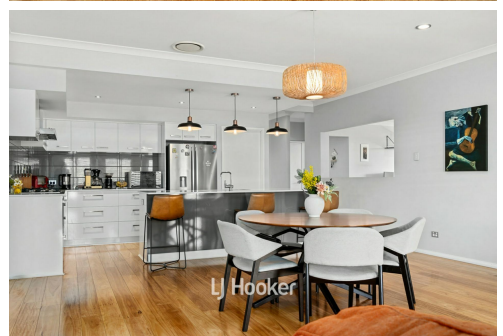
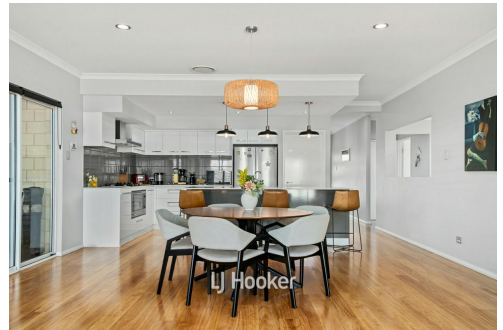
**Rebecca Maskell 0437 085 992**

Sales Consultant | [rebecca.maskell@ljhsouthwest.com.au](mailto:rebecca.maskell@ljhsouthwest.com.au)

**LJ Hooker Property South West WA (08) 9791 6880**

130 Victoria Street, BUNBURY WA 6230

[southwestwa.ljhooker.com.au](http://southwestwa.ljhooker.com.au) | [bunbury@ljhsouthwest.com.au](mailto:bunbury@ljhsouthwest.com.au)

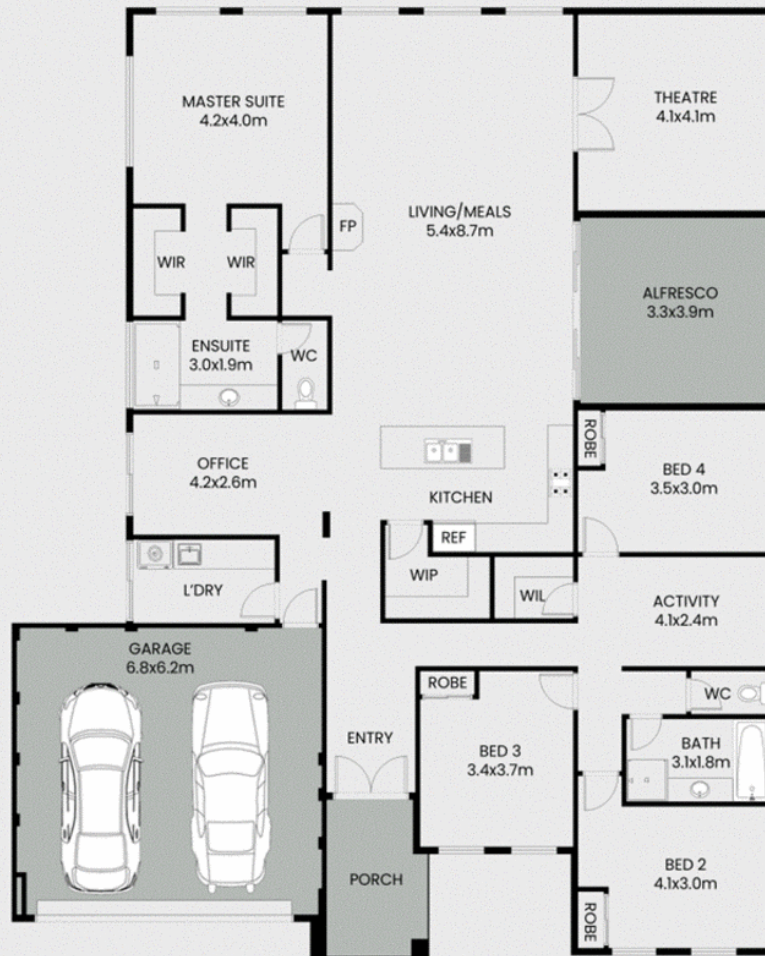


**Disclaimer:** All information contained therein is gathered from relevant third parties sources. We cannot guarantee or give any warranty about the information provided. Interested parties must rely solely on their own enquiries.

**LJ Hooker Property South West WA  
(08) 9791 6880**



**8 Adeline Drive, Millbridge WA 6232**



TOTAL AREA : 301.36m<sup>2</sup>

This floor plan including furniture, fixture measurements and dimensions are approximate and for illustrative purposes only.  
BoxStorvie.com gives no guarantee, warranty or representation as to the accuracy and layout.  
All enquiries must be directed to the agent, vendor or party representing this floor plan.

 **LJ Hooker**