

1 Braddon Way, Millbridge


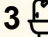
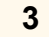
Stylish Ex-Display Home with Stunning Outdoor Living

This stunning four-bedroom, three-bathroom ex-display home combines modern design with premium finishes, creating a space that is as stylish as it is functional. Designed to impress, the home features spacious open-plan living areas, and quality fixtures throughout. Each bedroom has been thoughtfully positioned, with the master suite offering a true retreat complete with a beautiful ensuite. With its contemporary layout and attention to detail, this home is perfect for families or those who love to entertain in style.

At the heart of the home, the gourmet kitchen flows seamlessly into the living and dining zones before opening out to a spectacular outdoor entertaining area. Whether it's weekend barbecues, family gatherings, or simply relaxing with friends, the alfresco space provides the perfect backdrop for every occasion. Surrounded by modern landscaping and designed for year-round enjoyment, this outdoor area truly completes the home and elevates the lifestyle it offers.

FEATURES INCLUDE:

- Ex-display home
- Timber floors
- Massive open plan kitchen/dining/family area

4  3  3 

FOR SALE

Offers Over \$939,000

AGENTS

Steve Germon
0417 950 949
steve.germon@ljhsouthwest.com.au

Danny Germon
0418 670 014
danny.germon@ljhsouthwest.com.au

AGENCY

LJ Hooker Property South West WA
(08) 9791 6880

All information contained therein is gathered from relevant third parties sources.
We cannot guarantee or give any warranty about the information provided.
Interested parties must rely solely on their own enquiries.

 **LJ Hooker**

- Kitchen with modern & stylish appliances and a massive walk-in pantry
- Feature gas fireplace
- Theatre room
- Huge master bedroom with large ensuite and walk-in robe
- Two of the rear bedrooms have walk-in robes
- Fourth bedroom has its own ensuite
- Study
- Outdoor entertaining area with elaborate timber decking, recessed timber ceiling, aggregate concrete features and stunning landscaping and reticulation
- Triple garage is extra-long, extra high and features built in workstation, cupboards and a rear roller door for side yard access
- Leased at \$850 per week till 09/02/2026

Ready to make this stunning ex-display home yours? Call Steve Germon on 0417 950 949 now to book your inspection.

Disclaimer — whilst every care has been taken in the preparation of this advertisement and the approximate outgoings, all information supplied by the seller and the sellers agent is provided in good faith. Prospective purchasers are encouraged to make their own enquiries to satisfy themselves on all pertinent matters. Images are for illustrative purposes.

MORE DETAILS

Property ID	18K2HND
Property Type	House
House Size	247 m2
Land Area	691 m2
Including	Study Air Conditioning Toilets (3) Outdoor Entertaining Floorboards Built-in-Robes Fully Fenced Remote Garage

Steve Germon 0417 950 949

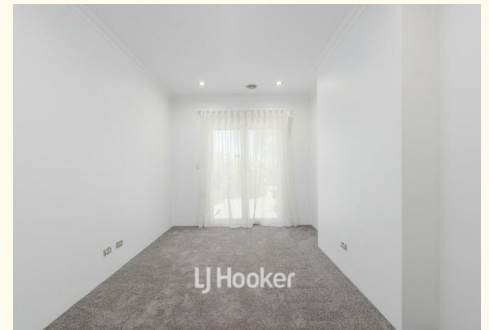
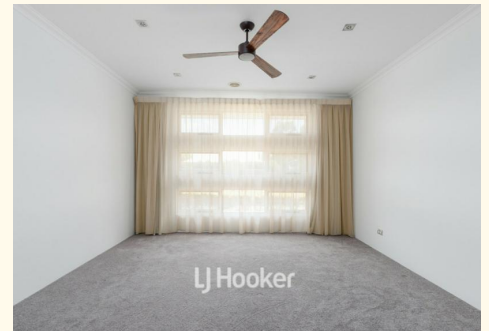
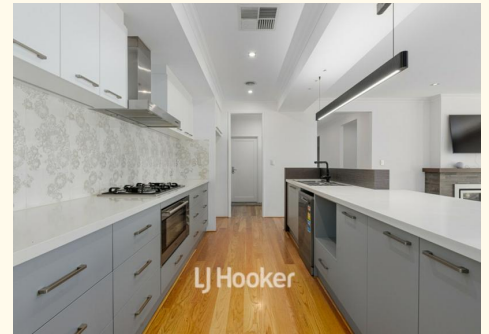
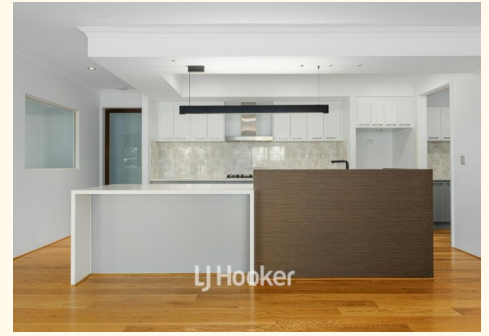
Sales Consultant â€“ Bunbury | steve.germon@ljhsouthwest.com.au

Danny Germon 0418 670 014

Sales Consultant â€“ Bunbury | danny.germon@ljhsouthwest.com.au

LJ Hooker Property South West WA (08) 9791 6880

130 Victoria Street, BUNBURY WA 6230
southwestwa.ljhooker.com.au | bunbury@ljhsouthwest.com.au



1 Braddon Way, Millbridge



FLOOR PLAN

ALFRESCO	: 27.82 m ²
GRAGE	: 64.03 m ²
HOUSE	: 247.02 m ²
PORTICO	: 6.10 m ²
TOTAL	: 344.97 m ²

This floor plan including furniture, fixture measurements and dimensions are approximate and for illustrative purposes only. BoxBrownie.com gives no guarantee, warranty or representation as to the accuracy and layout. All enquiries must be directed to the agent, vendor or party representing this floor plan.

