



27 Bay Road, Midway Point

Midway Point - Room to Grow, Space to Breathe, A Home to Love


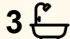
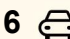
Ant's "Fluff-Free" Description...

Some homes just feel right the moment you walk in. This is one of them.

Set on a beautifully landscaped block in the heart of Midway Point, this is a home built around family life - the morning rush, the lazy weekends, the dinners that run long and the kids that never seem to run out of energy. There is space here for all of it, and then some.

The 2020 second storey addition transformed this home into something genuinely special. Professionally built and fully council-approved, it created a flexible, light-filled layout that grows and bends with your family. Little ones close by, teenagers with their own retreat, a quiet corner to work from home - this floorplan simply makes room for everyone.

Downstairs flows easily from living to outdoors, where two decks and a wide verandah invite you to slow down and enjoy. Picture morning

4  3  6 

FOR SALE

Offers over \$795,000

VIEW

Sat 20th Jun @ 12:00PM - 12:30PM

AGENTS

Ant Manton

0408 621 856

antmanton@ljhookerpinnacle.com

Zac Flanagan

0466 685 937

zflanagan@ljhpinnacle.com.au

AGENCY

LJ Hooker Pinnacle Property

(03) 6272 8177

All information contained therein is gathered from relevant third parties sources.
We cannot guarantee or give any warranty about the information provided.
Interested parties must rely solely on their own enquiries.

 **LJ Hooker**

coffee in the sun, friends over for a long lunch, and the kids tearing around their own playground while you put your feet up on the private deck. The whole yard has been lovingly landscaped, fully fenced and set up so the family can spread out in comfort and privacy.

WHAT YOU WILL LOVE...

- A warm, flexible floorplan that adapts to every stage of family life, from toddlers to teenagers
- Four genuine bedrooms and three bathrooms, with real separation for busy households
- Bright, comfortable living spaces that flow naturally to the outdoors
- Two decks and a sweeping verandah made for entertaining, relaxing and soaking up the views
- A private deck retreat where the grown-ups can unwind in peace
- A dedicated children's playground with soft, safe play surfaces
- A lovingly landscaped, fully fenced yard with established gardens, shrubbery and stone pathways
- A permanent veggie garden ready for the green thumbs of the family
- Garden shed, under-house storage and plenty of room for the everyday clutter of family life
- Generous parking for the whole household, plus dedicated caravan parking for the weekend adventures
- Year-round comfort with quality heating and cooling throughout
- Move-in ready, with the hard work already done for you

WHY MIDWAY POINT?

- A relaxed, waterside community where families settle in and stay for the long haul
- Surrounded by the calm of the bay, with walks, fishing spots and water views on your doorstep
- An easy run into Hobart, with the airport just minutes away for the travellers and FIFO families
- Sorell and its shopping, schools and services only a short drive up the road
- The beaches and vineyards of the East Coast right there for weekend escapes
- Genuine value compared to the city, with the space and lifestyle

that is getting harder to find closer in

This is more than a house. It is a home set up for the good stuff - space, separation, privacy and views - with nothing left on your to-do list but to move in and enjoy.

Take the full virtual tour: https://iguide.au/27_bay_rd_midway_point_tas_au/

Contact Ant Manton and the Rapid Response Unit to arrange your inspection.

Onwards and upwards to your slice of Midway Point magic!

"I Work Harder - It's THAT Simple!"

Disclaimer: The information contained herein has been supplied to us and we have no reason to doubt its accuracy, however, cannot guarantee it. Accordingly, all interested parties should make their own enquiries to verify this information.

MORE DETAILS

Property ID	TEJ1F
Property Type	House
House Size	140 m2
Land Area	524 m2
Including	Air Conditioning Toilets (3) Courtyard Balcony Deck Outdoor Entertaining Floorboards Workshop Built-in-Robes Fully Fenced

Ant Manton 0408 621 856

Real Estate Agent | antmanton@ljhookerpinnacle.com

Zac Flanagan 0466 685 937

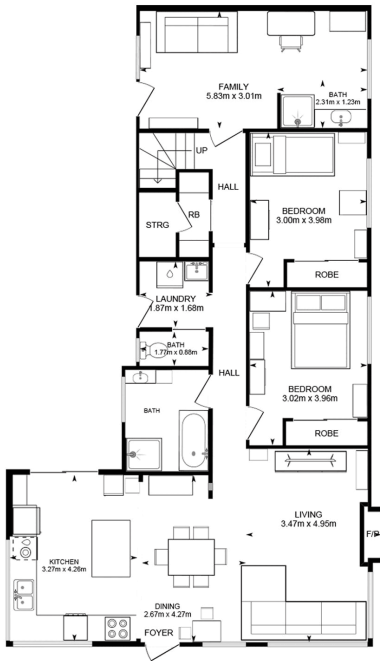
Operations Manager to Ant Manton | zflanagan@ljhpinnacle.com.au

LJ Hooker Pinnacle Property (03) 6272 8177

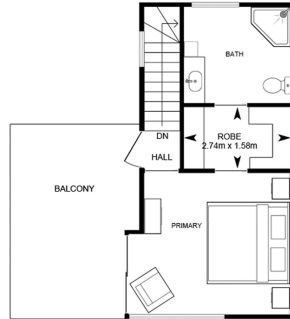
402 Main Road, GLENORCHY TAS 7010

pinnacleproperty.ljhooker.com.au | hello@ljhpinnacle.com.au

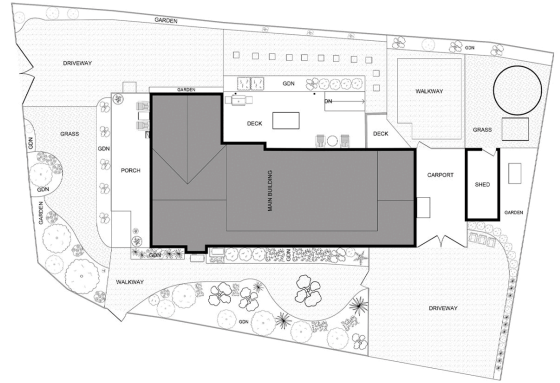




Main Floor



1st Floor



27 Bay Road, Midway Point
House area: 140 sqm

Areas and dimensions are approximate and therefore this floor plan should only be used for illustrative purposes.
Real Estate Marketing by nextcreative.com.au

