

Metung, 11 Besley Close

SPACIOUS FAMILY LIVING, ON OVER HALF AN ACRE

Built in 2019 and positioned in a quiet court within the exclusive Kings Cove Estate, this quality-built home offers room to move, grow, and entertain.

Designed for practical family living, it features four generous bedrooms, two living zones, and seamless indoor outdoor flow to a brand new timber deck with a peaceful treeline outlook.

Step inside and enjoy:

- A light filled open plan living and dining area with wood fire, two split systems, and north facing windows
- Modern kitchen with Caesarstone benchtops, 900mm gas cooktop and breakfast island
- Master bedroom with walk-in robe and ensuite
- Zoned bedrooms with built-in robes plus a separate lounge or kids retreat
- Double garage with internal access and large walk in linen cupboard



Disclaimer: All information contained therein is gathered from relevant third parties sources.

We cannot guarantee or give any warranty about the information provided. Interested parties must rely solely on their own enquiries.

4

2

2

For Sale

\$780,000 - \$840,000

View

Sat 24th May @ 10:00AM - 10:30AM

Contact

Al Orellana

0447 965 231

Al.lakesentrance@ljhooker.com.au

Nick Adams

0475 373 607

nadams.paynesville@ljhooker.com.au

LJ Hooker Paynesville | Lakes Entrance | Metung
(03) 5156 6166

The backyard is fully fenced and ready for your vision, with a powered shed featuring two roller doors, storage space and a dedicated workshop area. There's also room for a garden, pool, or additional outdoor entertaining features.

Set in a quiet street with the golf course on one side and a tranquil treeline on the other, it's just a short drive from Metung Village, the Golf Course, and Marina.

Contact us today to arrange your private inspection.

More About this Property

Property ID	MGEFCA
Property Type	House
Land Area	2051 m2
Including	Ensuite Air Conditioning Fire Place Deck Dishwasher Built-in-Robes Fully Fenced

Al Orellana 0447 965 231

Sales Consultant | Al.lakesentrance@ljhooker.com.au

Nick Adams 0475 373 607

Licensed Estate Agent | nadams.paynesville@ljhooker.com.au

LJ Hooker Paynesville | Lakes Entrance | Metung (03) 5156 6166

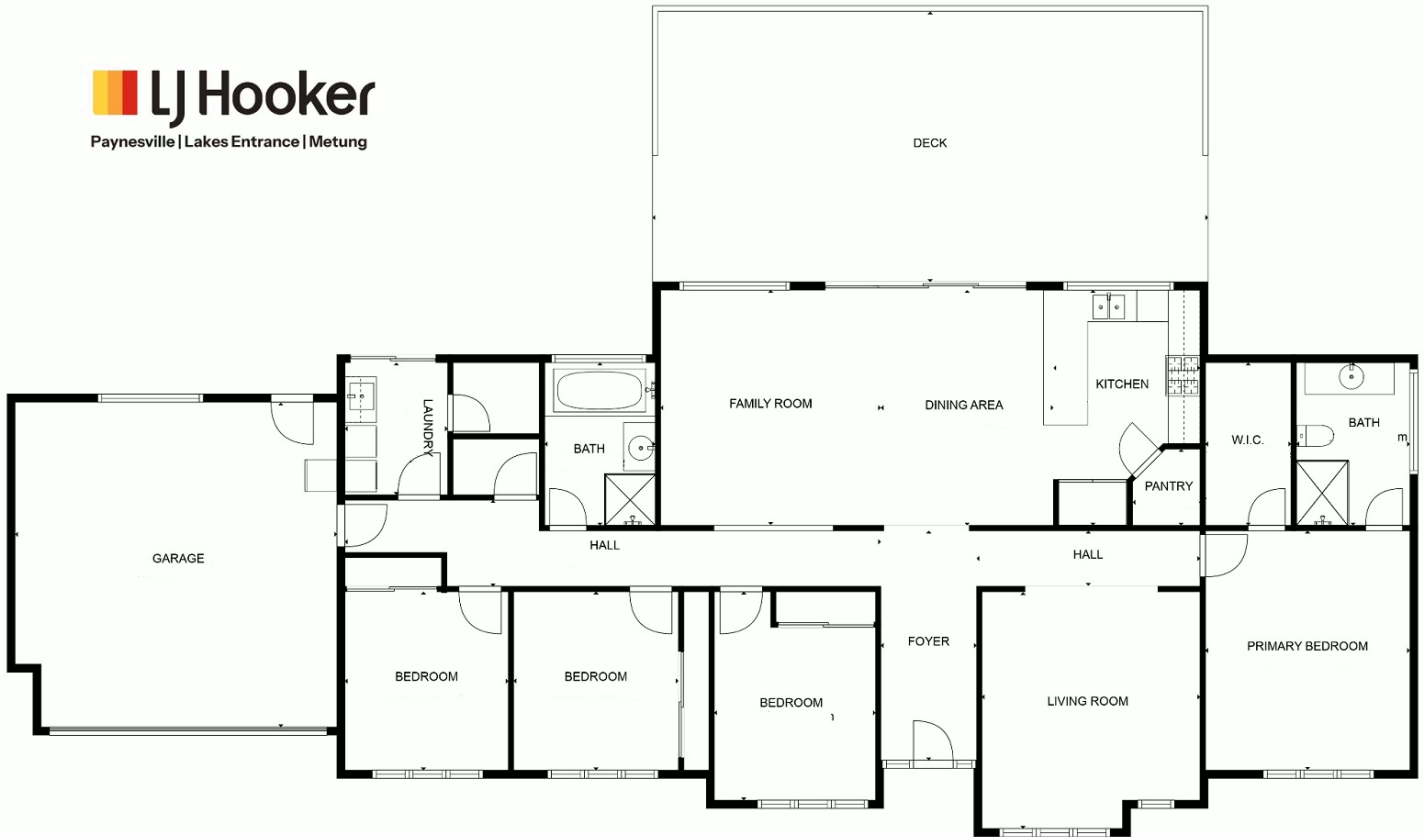
25A Esplanade, PAYNESVILLE VIC 3880

paynesville.ljhooker.com.au | paynesville@ljhooker.com.au



Disclaimer: All information contained therein is gathered from relevant third parties sources. We cannot guarantee or give any warranty about the information provided. Interested parties must rely solely on their own enquiries.

LJ Hooker Paynesville | Lakes Entrance | Metung (03) 5156 6166



Disclaimer: Whilst every attempt has been made to ensure the accuracy of this floorplan, measurements or doors, windows, rooms and any other items are approximate only. The producer or the agent cannot be held responsible for any errors, omissions or misstatements. This plan is for illustrative purposes only and should be used as such.