



Mermaid Beach, 508/9 Markeri Street

Mermaid Beach Beauty

Discover your perfect coastal retreat with this 2-bedroom ensuited bathroom and separate powder room apartment in highly sought-after Mermaid Beach. Ideally situated less than a 400m walk to the beach, this modern apartment offers both convenience and lifestyle.

This bright and spacious apartment is in excellent condition and presents beautifully.

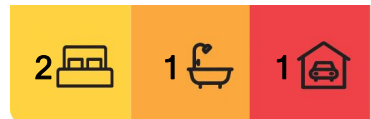
Relish in the generous living spaces, filled with sunlight throughout the entire day. Enjoy entertaining on your private balcony with stunning hinterland views and revel in the afternoon sunsets over the mountains.

The spacious open-plan living and kitchen area features sleek, contemporary finishes throughout, with a well-appointed kitchen offering ample storage and space.

Residents of this boutique residential only building enjoy a sunny rooftop terrace, with a



Disclaimer: All information contained therein is gathered from relevant third parties sources. We cannot guarantee or give any warranty about the information provided. Interested parties must rely solely on their own enquiries.



For Sale
\$750,000

View
ljhooker.com.au/P2ZHHD

Contact
Matt Conduit
0418 741 949
matt.conduit@ljhooker.com.au

LJ Hooker Broadbeach
(07) 5531 6688

view-filled pool and BBQ area.

The Highlights:

- ? Large Rooftop pool for Summer
- ? Rooftop terrace and viewing deck with 360 Degrees of sweeping coastal, city, and hinterland views
- ? Rooftop BBQ area and alfresco dining and lounge area
- ? Open-plan living adjoining a spacious, modern kitchen with island bench
- ? Light-filled balcony, perfect for soaking up the sun
- ? Built-in robes in both bedrooms
- ? Ducted air conditioning and ceiling fans throughout
- ? Recently updated contemporary european laundry
- Modern Bathroom and second powder room for guests
- ? Secure and Private Gated Residents' Parking
- ? Secure entry with Electronic Fob Access for foyer and lift
- ? Resident Onsite Building Manager
- ? Acoustic treatments maximising privacy
- ? Current rental income \$750pw Expires Nov

Surrounded by some of the Gold Coast's best restaurants such as Glenelg Public House, Etsu Izakaya and Bonita Bonita, to name a few awesome eateries.

For extra convenience, located across the road from the brand-new Mermaid Plaza, including Woolworths Metro, Super Butcher, Chempro and more.

This competitively priced apartment offers exceptional value and won't last long, so arrange your private inspection today.

Disclaimer:

Important Notice: We have in preparing this information used our best endeavours to ensure that the information contained herein is true and accurate. Prospective buyers should make their own enquiries to satisfy themselves as to its accuracy. Although high standards have been used in the preparation of this document, no legal responsibility can be accepted by LJ Hooker Broadbeach or any loss or damage resulting from the content or the use of this information. Any photographs show only certain parts of the property as it appeared at the time they were taken. Areas, amounts, measurements, distances and all other numerical information is approximate only.

More About this Property

Property ID	P2ZHHD
Property Type	Apartment
Including	Toilets (2)

Matt Conduit 0418 741 949

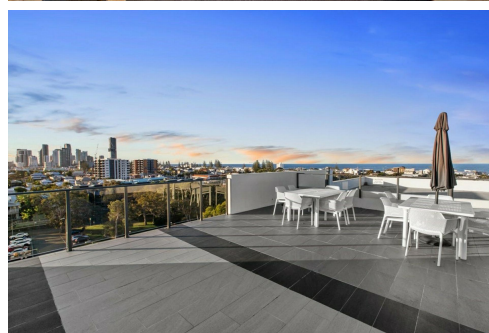
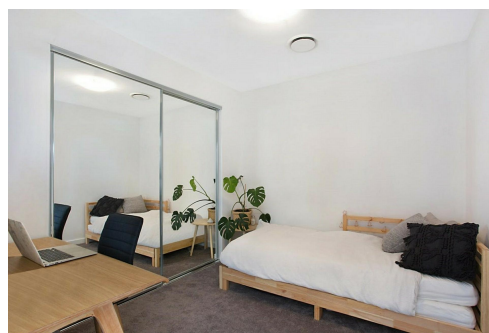
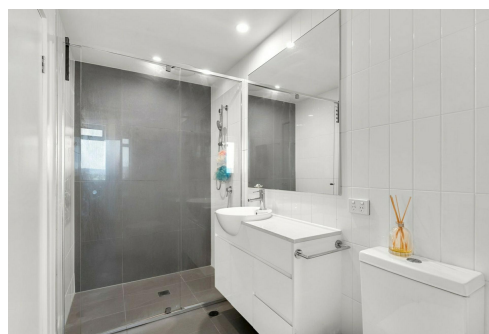
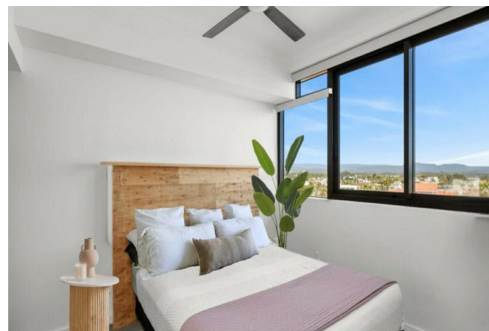
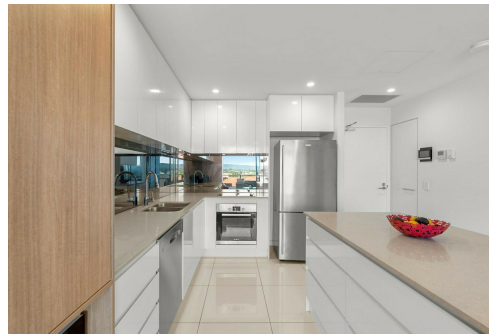
Director / Licensee | matt.conduit@ljhooker.com.au

LJ Hooker Broadbeach (07) 5531 6688

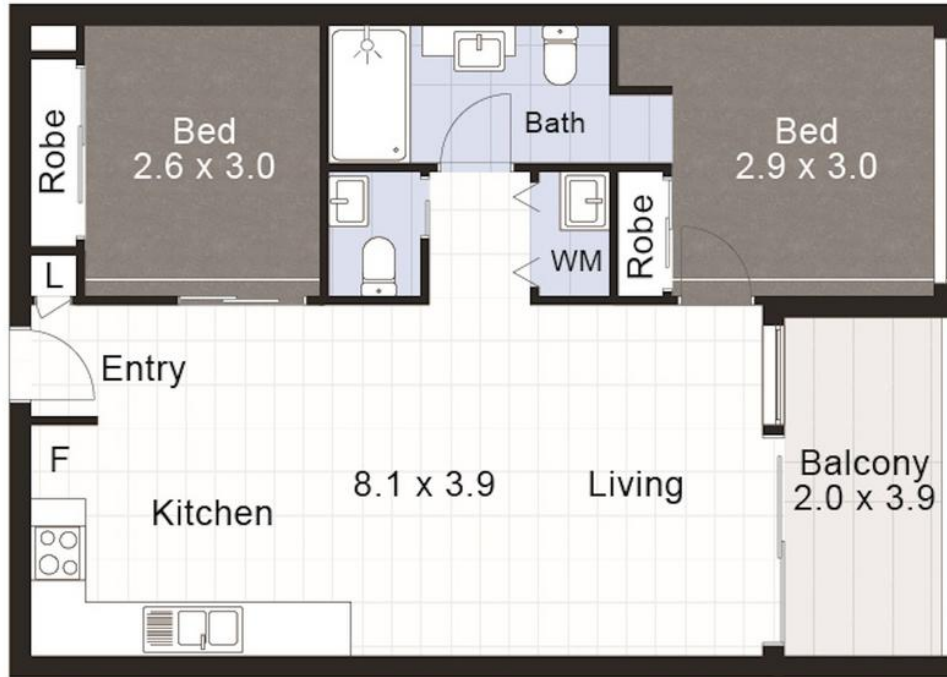
Shop 14, 90-104 Surf Parade, BROADBEACH QLD 4218
broadbeach.ljhooker.com.au | sales.broadbeach@ljhooker.com.au



Disclaimer: All information contained therein is gathered from relevant third parties sources. We cannot guarantee or give any warranty about the information provided. Interested parties must rely solely on their own enquiries.



LJ Hooker Broadbeach
(07) 5531 6688



LJ Hooker 508/9 Markeri Street, Mermaid Beach

Whilst bwrn.com.au has made every attempt to ensure the accuracy of the floor plan contained here, measurements are approximate and no responsibility is taken for any error, omission, or mis-statement. This plan is for illustrative purposes only.

Int - 67m²

Ext - 7m²

Total - 74m²