



LJ Hooker Leppington | Austral



LJ Hooker Leppington | Austral



LJ Hooker Leppington | Austral



LJ Hooker Leppington | Austral

78 Mount Pleasant Drive, Menangle Park

A Home Built for Growing Families!

Discover the ideal blend of style, comfort and modern convenience in this brand-new custom built family home. Perfectly positioned, within the highly sought-after community of Menangle Park.

Designed with growing families in mind, this spacious residence showcases contemporary living at its finest, offering premium inclusions and exceptional attention to detail throughout.

Featuring the following qualities:

- Open plan kitchen, living and dining area with an abundance of natural light
- Kitchen with 900mm appliances, 40mm waterfall bench top, wine rack, soft close draws, and feature lights
- Downstairs formal lounge/study area
- Downstairs master bedroom, perfect in-law retreat/teenage retreat with its own private access, bathroom and kitchenette
- Upstairs master bedroom with his and hers walk-in robes, ensuite and balcony
- Remaining 3 bedrooms all oversized with mirrored built-ins
- Large bathrooms tiled floor to ceiling, wall niche, led mirrors and free-standing bathtub

5 3 2

FOR SALE
Contact Agent

VIEW
By Appointment

AGENTS
Chelsea Mifsud
0429 628 005
cmifsud.leppington@ljhooker.com.au

Samuel Moscabenny
0448 649 817
smoscabenny.leppington@ljhooker.com.au

AGENCY
LJ Hooker Leppington | Austral
(02) 9606 4311

All information contained therein is gathered from relevant third parties sources.
We cannot guarantee or give any warranty about the information provided.
Interested parties must rely solely on their own enquiries.

LJ Hooker

- Oversized alfresco entertaining area overlooking huge yard perfect for kids to play, side access and space for a swimming pool S.T.C.A
- Additional features include 4 zoned ducted air conditioning, 2.7m ceilings throughout, downlights, led lights to staircase and an additional toilet in laundry

Ideally located just minutes from Macarthur Square, Camden Town Centre, local schools, Menangle Park Train Station and with easy access to the Hume Motorway, this exceptional home is perfectly positioned for a lifestyle of comfort and convenience.

This impressive residence is sure to captivate everyone and is a must see!

- Some images in this advertisement have been virtually furnished and are for illustrative purposes only. All areas and dimensions are approximates only.

Disclaimer: The above information has been furnished to LJ Hooker Leppington | Austral by the vendor/vendors legal representative. We have not verified whether or not that information is accurate, and do not have any belief one way or the other in its accuracy. LJ Hooker Leppington | Austral do not accept any responsibility to any person for its accuracy and do no more than pass it on. All interested parties should make and rely upon their own enquiries in order to determine whether or not this information is, in fact, accurate.

MORE DETAILS

Property ID	127EHCV
Property Type	House
Land Area	449 m2

Chelsea Mifsud 0429 628 005

Licensed Sales Agent | cmifsud.leppington@ljhooker.com.au

Samuel Moscabenny 0448 649 817

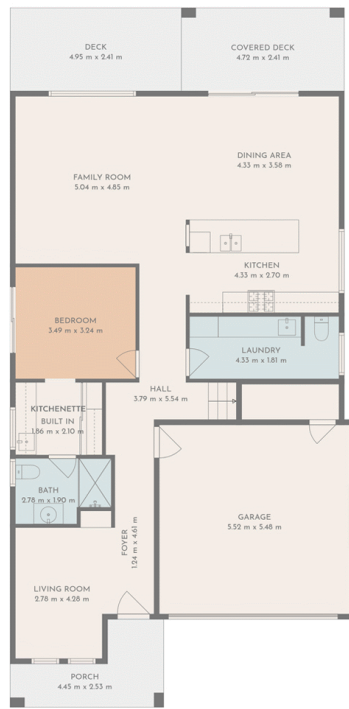
Licensed Sales Agent | smoscabenny.leppington@ljhooker.com.au

LJ Hooker Leppington | Austral (02) 9606 4311

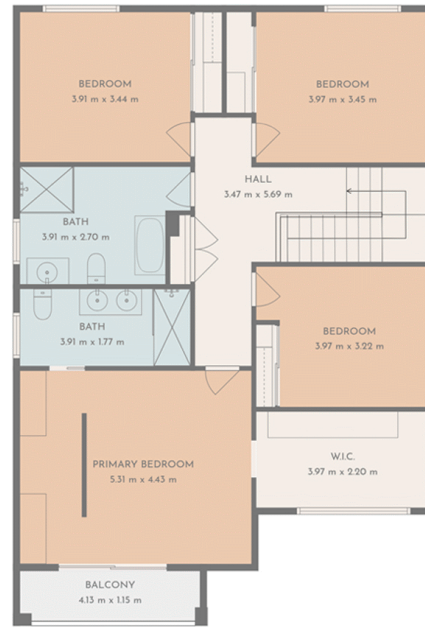
Leppington Village Shopping Centre, Shop GC1, 108-116 Ingleburn Road, LEPPINGTON NSW 2179

leppington.ljhooker.com.au | leppington@ljhooker.com.au





1ST FLOOR



2ND FLOOR

78 MOUNT PLEASANT DRIVE, MENANGLE PARK

Floor plans are approximate and for illustrative purposes only. While we do not doubt the accuracy of the floor plans, we make no guarantee, warranty, or representation as to their accuracy or completeness.

