

1 Cremin Place, Menai

## Luxury Family Entertainer with Multiple Outdoor Retreats

Showcasing generous proportions and exceptional indoor—outdoor flow, this impressive dual level house set on approx. 1,035.3sqm, delivers the ultimate lifestyle for large or multi-generational families who love to entertain. Nestled in a peaceful cul-de-sac and privately positioned, the home showcases generous space and thoughtful design, complemented by beautifully manicured gardens and a choice of inviting entertaining areas.

The heart of the home is a stunning designer kitchen featuring premium Smeg appliances, gas cooking, a breakfast bar and a fully equipped butler's pantry with a bar space and outdoor access. Servery windows open directly to the covered alfresco, creating a seamless bar-style entertaining zone connecting effortlessly with the expansive open-plan living and dining areas and outdoor entertaining zones. Designed for year-round enjoyment, the outdoor setting features a built-in fire pit, sparkling in-ground pool and a generous poolside cabana, creating a true entertainer's paradise.

Accommodation is generous with six bedrooms, including two on the ground floor with access to a full bathroom, ideal for extended family or guests. Additional living spaces including a private theatre room

6 3 4

**FOR SALE**  
**SOLD**

### AGENTS

Lush Pillay  
0407 121 573  
lush.pillay@ljhooker.com.au

Malayka Kounsai  
malayka.kounsai@ljhooker.com.au

### AGENCY

LJ Hooker Padstow  
(02) 9771 1177

All information contained therein is gathered from relevant third parties sources.  
We cannot guarantee or give any warranty about the information provided.  
Interested parties must rely solely on their own enquiries.



and upstairs rumpus, provide flexibility for families of all sizes and those working from home. Ideally located just minutes from the Menai shopping precinct, enjoy easy access to shops, cafés, restaurants and everyday conveniences.

- Quality built home in a quiet cul-de-sac with private position
- Open plan living & dining flowing seamlessly to multiple outdoor entertaining zones
- Kitchen with Smeg appliances, gas cooking and breakfast bar w/ servery windows
- Butler's pantry with bar space and internal laundry with tiled side access to outdoors
- Sparkling resort style in-ground pool w/ poolside cabana, separate fire-pit & BBQ zone
- Six spacious bedrooms, two on the ground floor with access to a full bathroom
- Theatre room and upstairs rumpus providing additional breakout space for the family
- Ample off-street parking with double LUG, ducted A/C throughout & other features

Disclaimer: All information contained herein is gathered from sources we believe reliable. We have no reason to doubt its accuracy, however we cannot guarantee it. All interested parties should make and rely upon their own enquiries.

## MORE DETAILS

Property ID	1EWRFAE
Property Type	House
Land Area	1035.3 m2
Including	Ensuite
	Air Conditioning
	Alarm
	Fire Place
	Built-in-Robes
	Area Views
	Car Parking - Surface
	Carpeted
	Close to Schools
	Close to Shops
	Close to Transport

### Lush Pillay 0407 121 573

Principal & Director | lush.pillay@ljhooker.com.au

### Malayka Kounsai

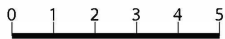
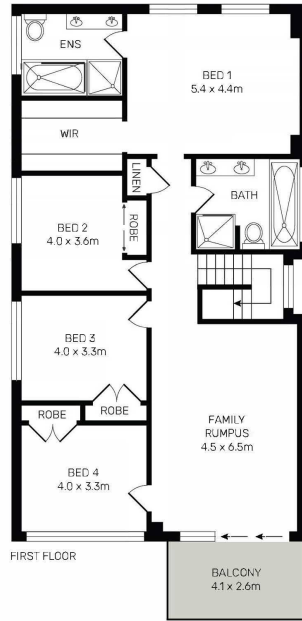
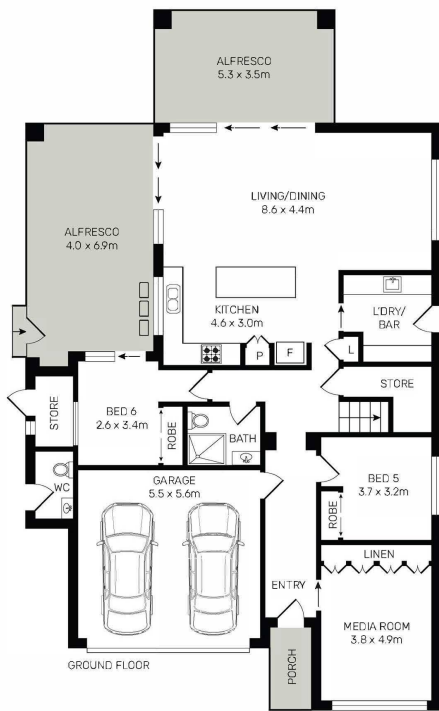
Executive Assistant To Lush Pillay | malayka.kounsai@ljhooker.com.au

### LJ Hooker Padstow (02) 9771 1177

2 Padstow Parade, PADSTOW NSW 2211

padstow.ljhooker.com.au | reception.padstow@ljhooker.com.au





All information contained herein is gathered from all sources we believe to be reliable. However we cannot guarantee its accuracy and interested parties should rely on their own enquiries.



1 Cremin Place, Mena

(02) 9771 1177

All information contained therein is gathered from relevant third parties sources. We cannot guarantee or give any warranty about the information provided. Interested parties must rely solely on their own enquiries.

