



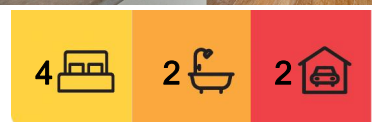
Melton West, 6 Southdean

Spacious family home

This stunning family home offers the perfect combination of space and comfort. Situated in a sought-after location within Westlakes Estate, close by to Woodgrove Shopping Centre, walking tracks and Lake, Schools, parks, bus stops and more! Sitting on approximately 760sqm land.

The heart of the home is the spacious, light-filled living area, which flows effortlessly into a well-appointed kitchen and dining space - ideal for entertaining or gatherings. With four generously sized bedrooms, including a master featuring full ensuite and walk-in wardrobe, there's plenty of room for everyone. The second living area provides an additional space for relaxation, perfect to accommodate the whole family.

Step outside to the inviting outdoor area, where you'll find a large, covered space for year-round enjoyment and bonus roller door rear access. Whether you're hosting a barbecue or simply unwinding after a long day, this outdoor space is the perfect backdrop for making



For Sale
\$600,000 - \$650,000

View
By Appointment

Contact
Zoe Crooks
0426 796 001
zoe.crooks@ljhmilton.com.au

Anuj Narwal
0410 120 588
anuj.narwal@ljhmilton.com.au



Disclaimer: All information contained therein is gathered from relevant third parties sources. We cannot guarantee or give any warranty about the information provided. Interested parties must rely solely on their own enquiries.

LJ Hooker Melton
(03) 8797 5588

memories with family and friends.

Situated on a large block, there's ample room for children to play, pets to roam. This property offers an outstanding opportunity for those seeking a modern, low-maintenance lifestyle with room to grow.

Don't miss the chance to secure this beautiful home that ticks all the boxes. Contact Zoe Crooks on 0426 796 001 today!

DISCLAIMER: All stated dimensions are approximate only. Particulars given are for general information only and do not constitute any representation on the part of the vendor or agent.

Please see the below link for an up-to-date copy of the Due Diligence Check List:

<http://www.consumer.vic.gov.au/duediligencechecklist>

More About this Property

Property ID	R37HWU
Property Type	House
Land Area	759 m ²

Zoe Crooks 0426 796 001

Sales Director | zoe.crooks@ljhmelton.com.au

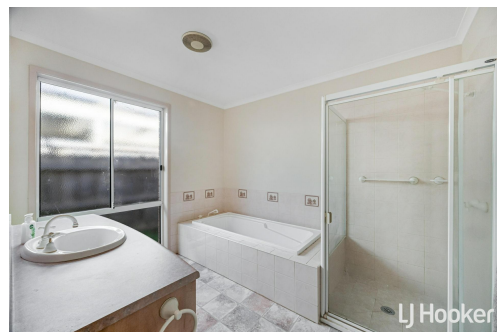
Anuj Narwal 0410 120 588

Director | anuj.narwal@ljhmelton.com.au

LJ Hooker Melton (03) 8797 5588

307 High Street, MELTON VIC 3337

melton.ljhooker.com.au | admin@ljhmelton.com.au



Disclaimer: All information contained therein is gathered from relevant third parties sources. We cannot guarantee or give any warranty about the information provided. Interested parties must rely solely on their own enquiries.

LJ Hooker Melton
(03) 8797 5588



6 Southdean Melton West VIC

The site plan and floor plan are not to scale. Measurements are indicative and in metres. Bushes and trees are place for illustration purposes. Plans should not be relied on. Interested parties should make and rely on their own enquiries.



LJ Hooker Melton
(03) 8797 5588

Disclaimer: All information contained therein is gathered from relevant third parties sources. We cannot guarantee or give any warranty about the information provided. Interested parties must rely solely on their own enquiries.