



2 Lumea Place, Melton West

Spacious Renovated Family Home with Large Shed on 751sqm in Quiet Court

Nestled in a quiet court location, this spacious and beautifully renovated 4-bedroom, 2 Bathrooms with 4 Toilets Home sits on a generous approx. 751sqm allotment, offering the perfect combination of comfort, space, and practicality.

Designed for family living, the home features well-sized bedrooms and a thoughtfully updated interior that is ready to move straight into. Outside, the property truly shines with a large shed and workshop, making it ideal for tradies, hobbyists, or those needing extra storage and workspace.

With plenty of room for vehicles, tools, or additional storage, this property offers exceptional flexibility for growing families and professionals alike.

Located in an area experiencing strong growth, this home also presents a fantastic opportunity for investors looking to secure a solid asset in a desirable pocket.

4  2  2 

FOR SALE
\$599,000-\$649,000

VIEW
Thu 9th Apr @ 5:30PM - 5:50PM

AGENTS
Daniel Mammone
0426 467 803
daniel.mammone@ljhmelton.com.au

AGENCY
LJ Hooker Melton
(03) 8797 5588

All information contained therein is gathered from relevant third parties sources. We cannot guarantee or give any warranty about the information provided. Interested parties must rely solely on their own enquiries.

 **LJ Hooker**

Whether you're a family looking for more space, a tradie needing a functional setup, or an investor seeking future potential, this property delivers outstanding value and opportunity.

For the due diligence checklist, please visit the following link:
<https://www.consumer.vic.gov.au/duediligencechecklist>

DISCLAIMER: All dimensions provided are approximate. The information given is for general purposes only and does not constitute any representation on the part of the vendor or agent.

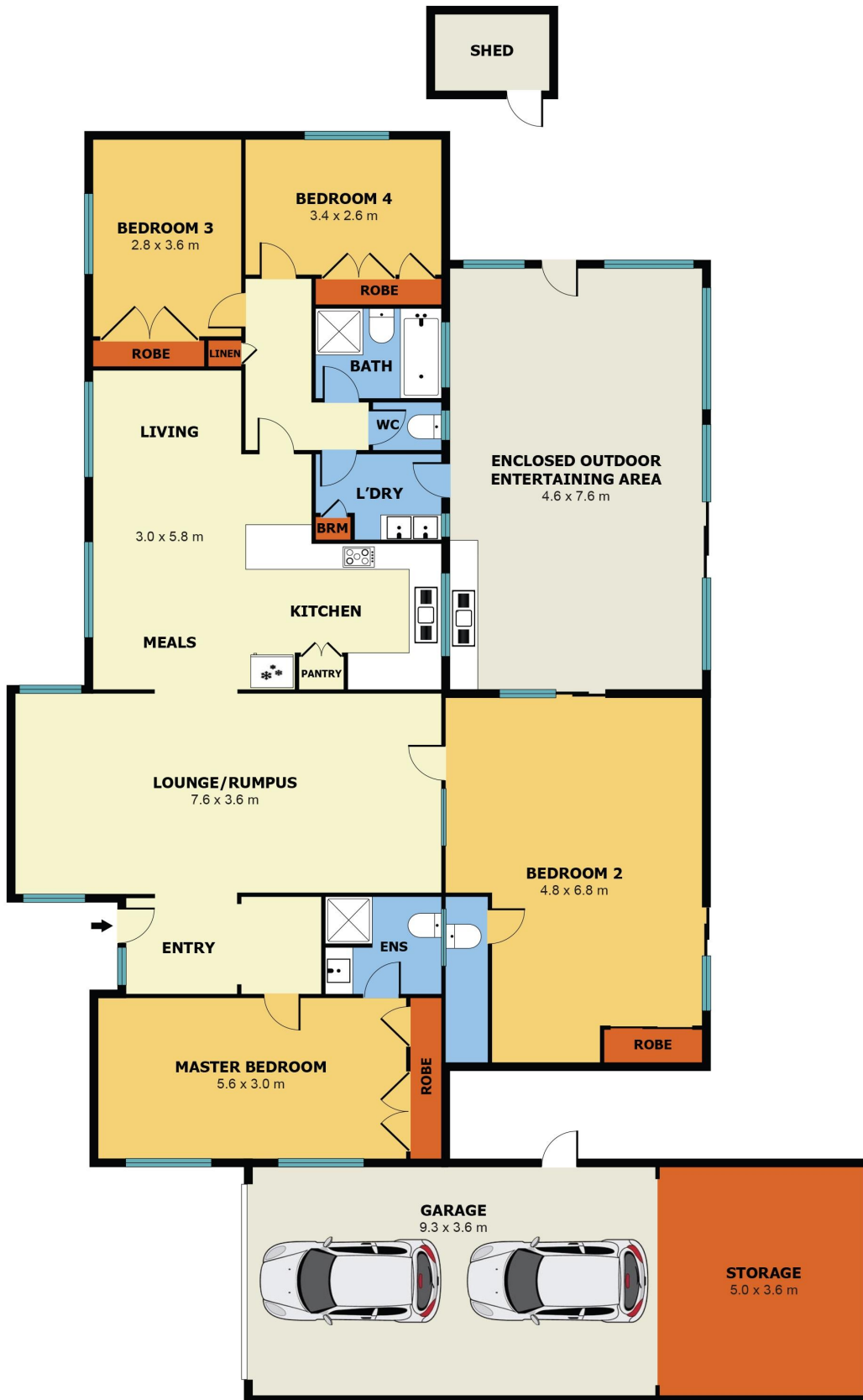
MORE DETAILS

Property ID	RSQHWU
Property Type	House
Land Area	751 m2

Daniel Mammone 0426 467 803
Sales Executive | daniel.mammone@ljhmelton.com.au

LJ Hooker Melton (03) 8797 5588
307 High Street, MELTON VIC 3337
melton.ljhooker.com.au | admin@ljhmelton.com.au





**2 LUMEA PLACE,
MELTON WEST, VIC**

LJ Hooker

Measurements are approximate. Not to Scale. illustrative purposes only.

All information contained therein is gathered from relevant third parties sources.
We cannot guarantee or give any warranty about the information provided.
Interested parties must rely solely on their own enquiries.

 **LJ Hooker**