



34 Essex Drive, Melton

Nest or invest

Nestled in a sought-after location, this well-presented home is the perfect haven for families seeking space, comfort, and lifestyle. Situated on a generous block, this property offers an expansive front and back yard. Close by to all amenities including schools, shops, public transport, parks and more!

Designed with family living in mind, the home features a cosy lounge area, flowing through to the dining and kitchen, which is well-equipped with ample storage and bench space.

Comprising of 3 bedroom and light filled central bathroom. Step outside under the pergola over-looking the back yard and bonus two sheds at the rear of the property providing extra space for tools and storage.

This is the ideal opportunity to secure a family friendly home in the heart of Melton. Whether you're investing, or buying your first home, this property ticks all the boxes. Contact Zoe Crooks on 0426 796 001.

DISCLAIMER: All stated dimensions are approximate only. Particulars given are for general information only and do not constitute any representation on the part of the vendor or agent. Please see the below link for an up-to-date copy of the Due Diligence Check List:

All information contained therein is gathered from relevant third parties sources. We cannot guarantee or give any warranty about the information provided. Interested parties must rely solely on their own enquiries.

3 1 2

FOR SALE

Contact Zoe Crooks

AGENTS

Zoe Crooks
0426 796 001
zoe.crooks@ljhmelton.com.au

Anuj Narwal
0410 120 588
anuj.narwal@ljhmelton.com.au

AGENCY

LJ Hooker Melton
(03) 8797 5588



<http://www.consumer.vic.gov.au/duediligencechecklist>

MORE DETAILS

Property ID RBKHWU
Property Type House
Land Area 579 m2

Zoe Crooks 0426 796 001

Sales Director | zoe.crooks@ljhmelton.com.au

Anuj Narwal 0410 120 588

Director | anuj.narwal@ljhmelton.com.au

LJ Hooker Melton (03) 8797 5588

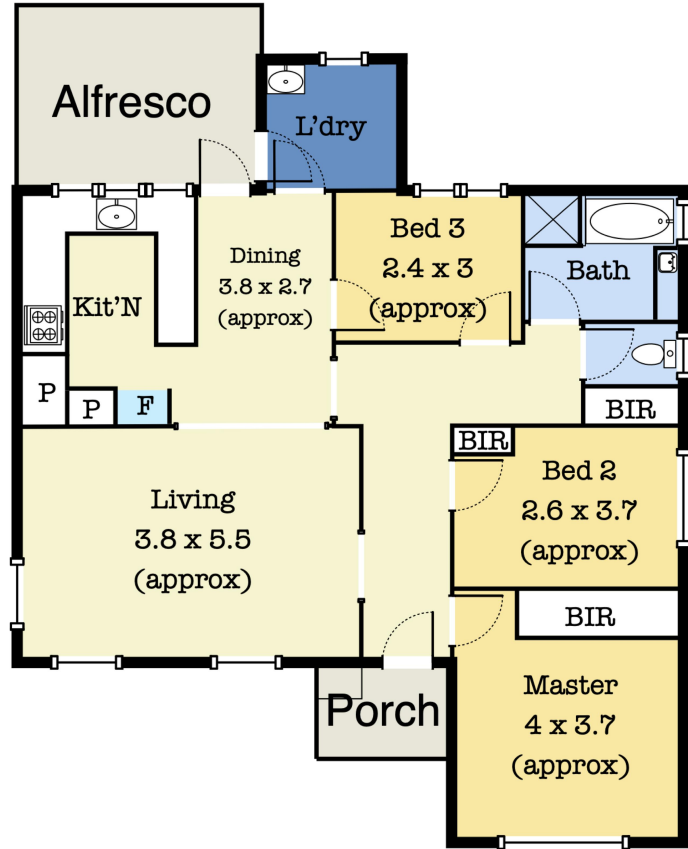
307 High Street, MELTON VIC 3337

melton.ljhooker.com.au | admin@ljhmelton.com.au



All information contained therein is gathered from relevant third parties sources.
We cannot guarantee or give any warranty about the information provided.
Interested parties must rely solely on their own enquiries.

Floor Plan



34 Essex Dr, Melton VIC 3337

*This floorplan is for illustration purposes only and no warranty is given to its accuracy. Purchasers are advised to carry out their own investigations.