



50 Antonio Drive, Melton South

Modern Family Living- Style, Space & Comfort Combined- 3 LIVING AREAS

Welcome to 50 Antonio Drive, Melton South, where modern design meets family functionality. From the moment you step inside, you'll be greeted by a wide corridor, high ceilings, and modern floorboards that flow seamlessly through the living zones, setting the tone for a stylish and comfortable home.

The formal living area at the front offers the perfect retreat or entertainment space. Adjacent to this is the spacious master suite, accessed through double doors, offering plenty of space even after a king-size bed, a walk-in robe, and a luxurious ensuite featuring a double vanity.

Continue through to the expansive open-plan kitchen, dining and family area, offering plenty of space for family gatherings, entertaining, or relaxed living. Showcasing a black waterfall stone benchtop, feature pendant lighting, 900mm stainless steel appliances, walk-in pantry, dishwasher, gas cooktop and oven, and ample storage, this kitchen blends style and practicality beautifully.

4  2  2 

FOR SALE
Contact Agent!

AGENTS

Yohanna Saad
0423 523 061
yohanna.saad@ljhmelton.com.au

Anuj Narwal
0410 120 588
anuj.narwal@ljhmelton.com.au

AGENCY

LJ Hooker Melton
(03) 8797 5588

All information contained therein is gathered from relevant third parties sources.
We cannot guarantee or give any warranty about the information provided.
Interested parties must rely solely on their own enquiries.

 **LJ Hooker**

A versatile multipurpose room - ideal as a kids' play area, home office, or additional bedroom - is enhanced by a modern slatted wall divider for added privacy and flexibility. The remaining three bedrooms, all fitted with plush carpet, built-in mirrored robes, and ceiling fans, are serviced by a modern central bathroom with bathtub.

Step outside to a low-maintenance landscaped yard with a concreted alfresco area, perfect for year-round entertaining.

Additional features include:

- Modern floorboards throughout living areas
- Carpeted bedrooms for added comfort
- Evaporative cooling & ducted heating
- Security alarm system & cameras
- Downlights throughout
- Side access gate - potential for extra vehicle or trailer parking

Set on a 528m² (approx.) This home perfectly blends quality, space, and contemporary style - ideal for families, investors, or anyone seeking a move-in-ready residence.

Conveniently located near schools, parks, shops, freeway access, and Melton South Train Station - this property ticks all the boxes for modern family living!

Don't miss your chance to secure this wonderful property - it won't last long!

Call Yohanna Saad on 0423 523 061 to inspect today!

DISCLAIMER: All stated dimensions are approximate only. Particulars given are for general information only and do not constitute any representation on the part of the vendor or agent.

Please see the below link for an up-to-date copy of the Due Diligence Check List:

<http://www.consumer.vic.gov.au/duediligencechecklist>

MORE DETAILS

Property ID	JPXHWU
Property Type	House
Land Area	528 m ²
Including	Ensuite Toilets (2)

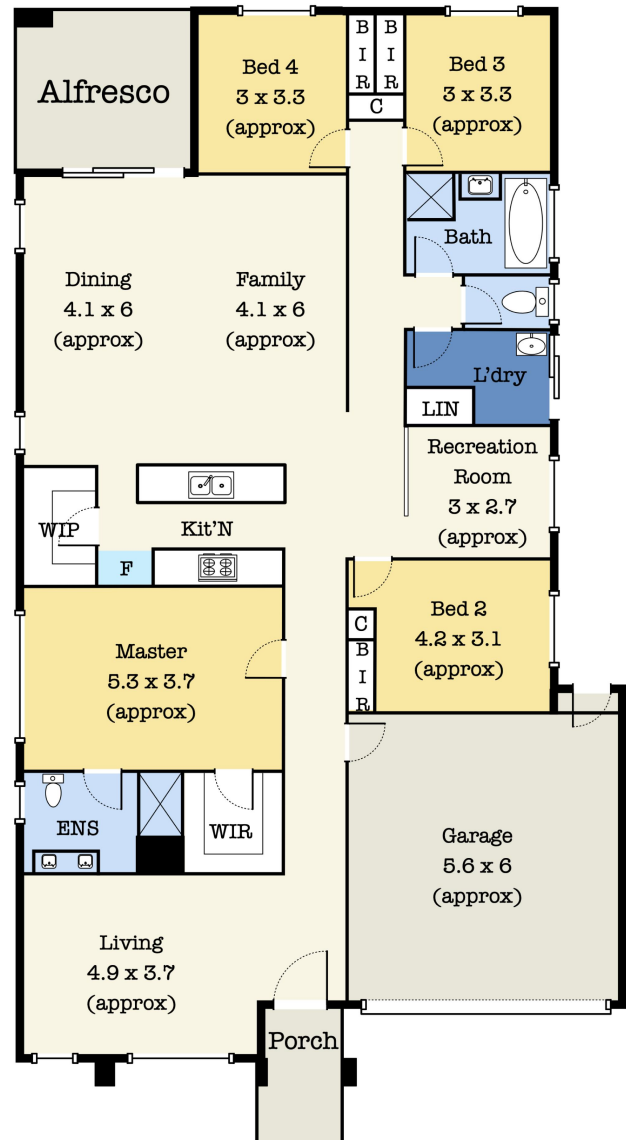
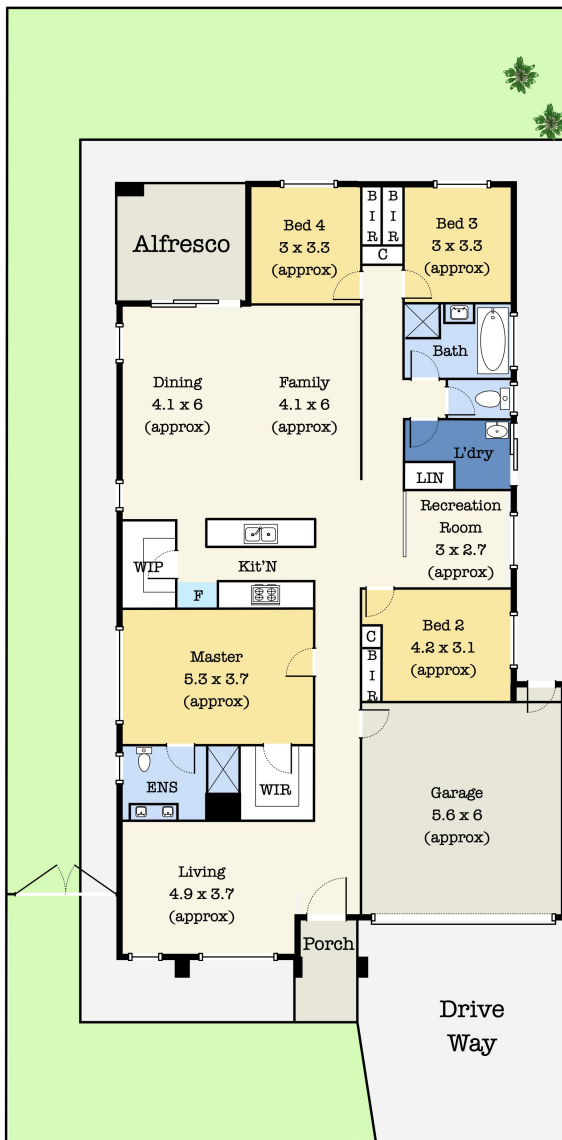
Yohanna Saad 0423 523 061
Sales Agent | yohanna.saad@ljhmelton.com.au
Anuj Narwal 0410 120 588
Director | anuj.narwal@ljhmelton.com.au

LJ Hooker Melton (03) 8797 5588
307 High Street, MELTON VIC 3337
melton.ljhooker.com.au | admin@ljhmelton.com.au

All information contained therein is gathered from relevant third parties sources.
We cannot guarantee or give any warranty about the information provided.
Interested parties must rely solely on their own enquiries.



Floor Plan



50 Antonio Dr, Melton South VIC 3338

*This floorplan is for illustration purposes only and no warranty is given to its accuracy. Purchasers are advised to carry out their own investigations.