

26 Clement Way, Melton South

## Nest or Invest- Prime Melton South Location

Welcome to 26 Clement Way, Melton South - a well-appointed four-bedroom, two-bathroom home designed for comfortable family living and effortless entertaining.

The master bedroom serves as a private retreat, complete with a generous his and hers walk-in robe and a well-appointed ensuite. The remaining three bedrooms are all fitted with built-in robes, providing ample storage for the whole family.

At the heart of the home is a spacious kitchen featuring expansive benchtop space, perfect for meal preparation and entertaining. This seamlessly flows into the open-plan living and dining area, creating a warm and inviting space for everyday living.

Step outside to a generously sized backyard, offering plenty of room for kids to play, outdoor entertaining, or future enhancements.

Additional features include solar panels for energy efficiency, a split system in the main living/dining area for year-round comfort, and ducted heating throughout the home.

4 2 2

**FOR SALE**  
\$579,000-\$609,000

**VIEW**  
Sat 20th Jun @ 10:00AM - 10:20AM

**AGENTS**  
Yohanna Saad  
0423 523 061  
yohanna.saad@ljhmelton.com.au

Anuj Narwal  
0410 120 588  
anuj.narwal@ljhmelton.com.au

**AGENCY**  
LJ Hooker Melton  
(03) 8797 5588

All information contained therein is gathered from relevant third parties sources. We cannot guarantee or give any warranty about the information provided. Interested parties must rely solely on their own enquiries.

**LJ Hooker**

Conveniently located, the property is within close proximity to local parks and recreational reserves, quality schools, childcare centres, and public transport options. You'll also enjoy easy access to shopping precincts, including Opalia Plaza, Woodgrove Shopping Centre, as well as nearby train stations and major roadways, making commuting simple and convenient.

Perfectly suited for families, first home buyers, or investors, this property combines space, comfort, and practicality in a convenient location.

Call Yohanna Saad on 0423 523 061 for your private inspection.

**DISCLAIMER:** All stated dimensions are approximate only. Particulars given are for general information only and do not constitute any representation on the part of the vendor or agent.

Please see the below link for an up-to-date copy of the Due Diligence Check List:

<http://www.consumer.vic.gov.au/duediligencechecklist>

## MORE DETAILS

Property ID	RV0HWU
Property Type	House
Land Area	499 m2
Including	Ensuite Toilets (2)

**Yohanna Saad 0423 523 061**

Sales Agent | [yohanna.saad@ljhmelton.com.au](mailto:yohanna.saad@ljhmelton.com.au)

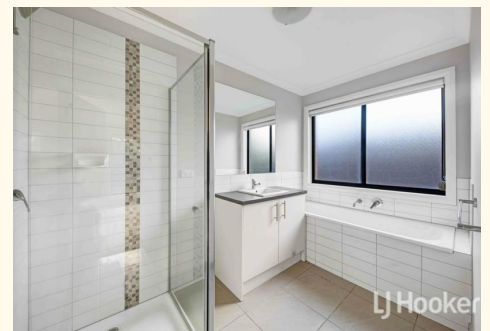
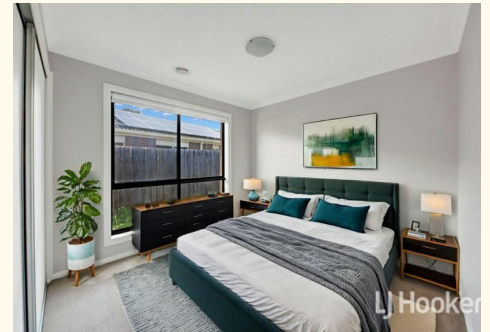
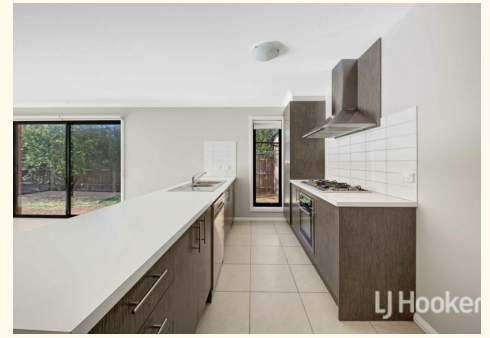
**Anuj Narwal 0410 120 588**

Director | [anuj.narwal@ljhmelton.com.au](mailto:anuj.narwal@ljhmelton.com.au)

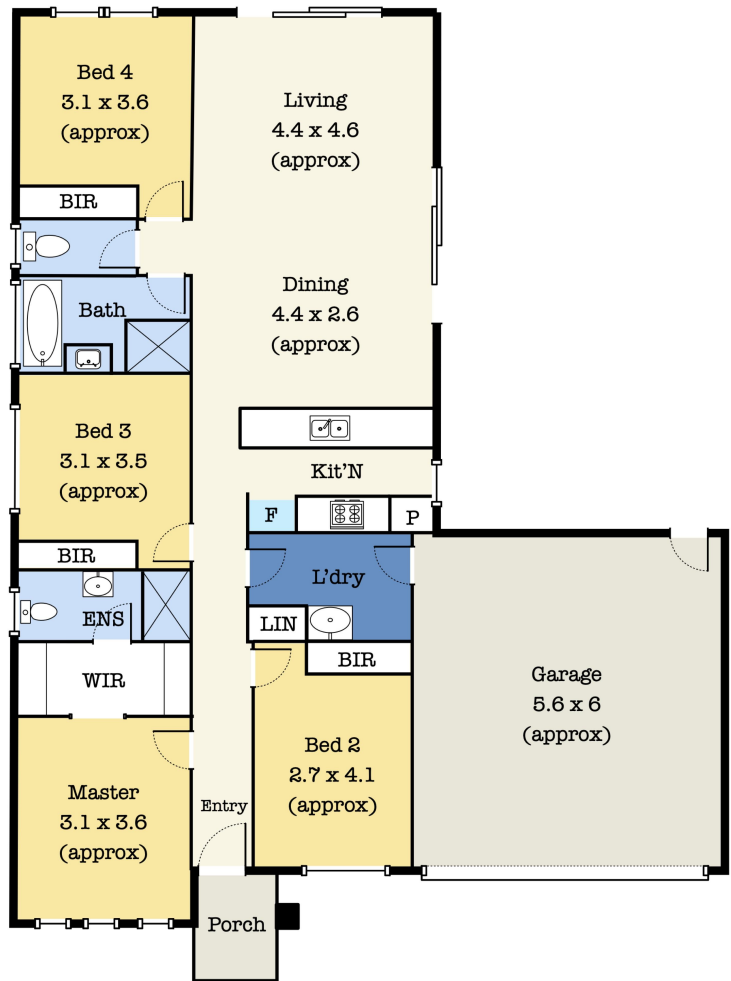
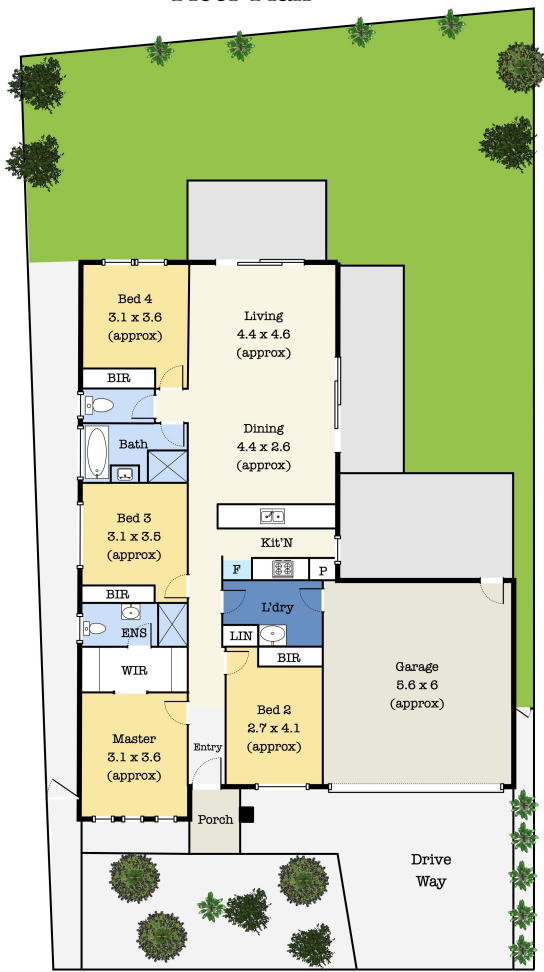
**LJ Hooker Melton (03) 8797 5588**

307 High Street, MELTON VIC 3337

[melton.ljhooker.com.au](http://melton.ljhooker.com.au) | [admin@ljhmelton.com.au](mailto:admin@ljhmelton.com.au)



# Floor Plan



## 26 Clement Way, Melton South VIC 3338

\*This floorplan is for illustration purposes only and no warranty is given to its accuracy. Purchasers are advised to carry out their own investigations. All the dimensions are approximately.