



15 Harper Street, Melton South

Lifestyle and Location Perfectly Aligned

The Property

Welcome to 15 Harper Street, Melton South. This beautifully designed property in Maplewood Estate blends contemporary style with everyday comfort. A thoughtfully planned layout is enhanced by light-filled interiors that create a warm and welcoming atmosphere, while versatile living spaces cater perfectly to modern lifestyles. Perfectly suited to first home buyers or savvy investors, this outstanding home is further elevated by its location, surrounded by schools, shopping, parklands, and excellent transport links.

The Point of Difference

- A welcoming open plan living and dining area forms the heart of the home, seamlessly connected to the kitchen and complemented by a separate lounge that provides a relaxing retreat.
- Four comfortable bedrooms, including a main suite appointed with a walk-in robe and private ensuite. The remaining bedrooms include built-in robes and enjoy easy access to the modern main bathroom.
- A stylish kitchen featuring quality stainless-steel appliances including oven, cooktop, and dishwasher, enhanced by ample

4  2  2 

FOR SALE

\$600,000 - \$640,000

AGENTS

Paul Caine

0421 551 051

paul.caine@ljhooker.com.au

Silvana Masalkovski

0448 846 629

silvana.masalkovski@ljhooker.com.au

AGENCY

LJ Hooker Point Cook

(03) 9975 7080

All information contained therein is gathered from relevant third parties sources.
We cannot guarantee or give any warranty about the information provided.
Interested parties must rely solely on their own enquiries.



cabinetry, overhead cupboards, a full pantry, and a breakfast bench designed for casual dining and meal preparation.

- Nestled on a 448m² (approx.) allotment, featuring a spacious fully fenced backyard that provides secure outdoor space with plenty of room to enjoy.
- Additional features include ducted heating, a split-system unit in the open plan living area, a separate laundry, and a double car garage with internal access.

The Point of Interest

Perfectly located for lifestyle and convenience, this home places everything within easy reach. Melton Station Square is moments away for daily shopping, while Woodgrove Shopping Centre presents a wide array of retail and dining options. Local schools and childcare are close at hand, while nearby parks, scenic reserves, and green open spaces provide plenty of opportunities to enjoy the outdoors. Public transport is well-serviced with V/Line trains from Melton Station and local FlexiRide bus routes, while major arterials provide a convenient commute to the Melbourne CBD and beyond. With amenities at your doorstep and the appeal of a thriving estate, this location continues to deliver outstanding convenience and lifestyle.

Note. All stated dimensions are approximate only. Particulars given are for general information only and do not constitute any representation on the part of the vendor or agent. Any school zoning stated based on www.findmyschool.vic.gov.au as of 30/09/25.

MORE DETAILS

Property ID	2HADHGH
Property Type	House
Land Area	448 m ²

Paul Caine 0421 551 051

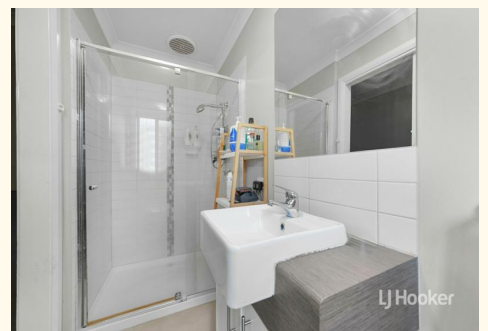
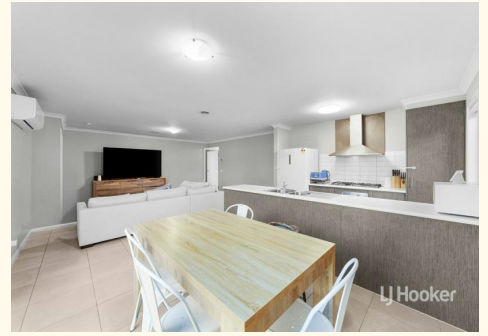
Director | Licensed Estate Agent | Auctioneer |
paul.caine@ljhooker.com.au

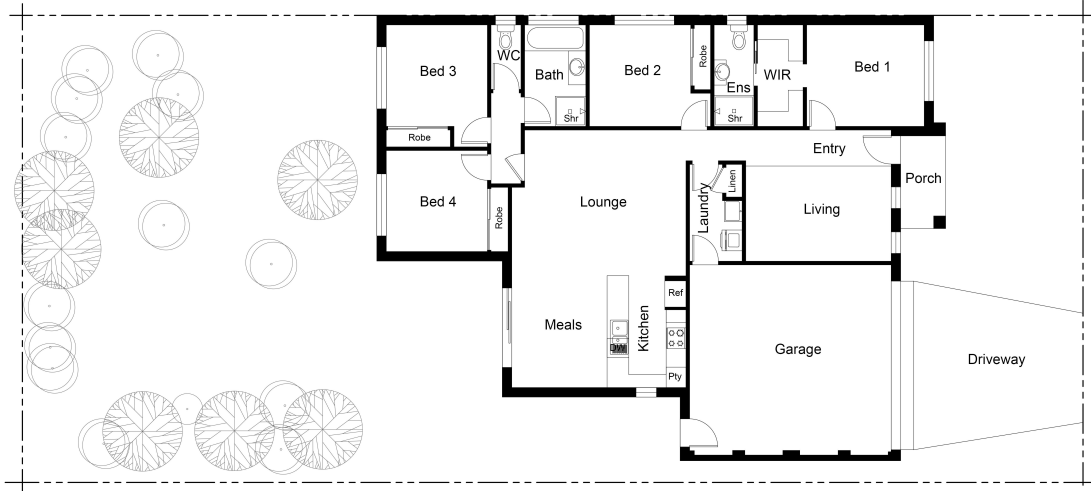
Silvana Masalkovski 0448 846 629

Director | Licensed Estate Agent |
silvana.masalkovski@ljhooker.com.au

LJ Hooker Point Cook (03) 9975 7080

Shop 211, 4 Main Street, POINT COOK VIC 3030
pointcook.ljhooker.com.au | pointcook@ljhooker.com.au





FLOOR PLAN ON SITE PLAN

This floor plan including furniture, fixture measurements and dimensions are approximate and for illustrative purposes only. BoxBrownie.com gives no guarantee, warranty or representation as to the accuracy and layout. All enquiries must be directed to the agent, vendor or party representing this floor plan.



All information contained therein is gathered from relevant third parties sources. We cannot guarantee or give any warranty about the information provided. Interested parties must rely solely on their own enquiries.

