



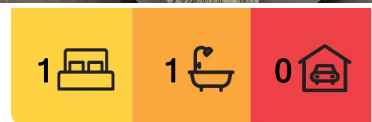
## Melbourne, 3706/442-450 Elizabeth Street

### Lighthouse Apartment For Sale

Lighthouse is a landmark building with benchmark design. Set between two of Melbourne's iconic streets Franklin and Elizabeth Street, this beautiful building rises from the city's rich cultural fabric and brings a new level of sophisticated elegance to the CBD. The development will feature automated car parking stacker system, pool, and resident lounge areas along with amazing views across Melbourne and beyond. Open-plan living area extends with outdoor balcony assists you in enjoying spectacular views. Well positioned kitchen equipped with stainless steel appliances and plenty of cupboard space. Spacious bedroom offers BIR's and City views. Other features comprising secure intercom access; floor to ceiling windows; stylish bathroom; split system air-con; generously sized balcony. Features: - Secure video entrance - Generous



**Disclaimer:** All information contained therein is gathered from relevant third parties sources. We cannot guarantee or give any warranty about the information provided. Interested parties must rely solely on their own enquiries.



#### For Sale

For Sale: \$365,000-\$390,000

#### View

[ljhooker.com.au/MTVHC2](http://ljhooker.com.au/MTVHC2)

#### Contact

**Olia Cai**

0401 084 971

[ocai.cityresmelbourne@ljhooker.com.au](mailto:ocai.cityresmelbourne@ljhooker.com.au)

**LJ Hooker City Residential**  
**(03) 9600 2166**

bedrooms with built-in robes - Sparking bathroom - Open plan living and dining with adjacent balcony with city view - Kitchen with dishwasher+ gas cook top + appliances - European Laundry - Split air-con system - On site building manager - Building Facilities including gym, pool, spa, and resident lounge areas along with amazing views across Melbourne and beyond Please notes that photo.ID is required at all times of inspection.

## More About this Property

<b>Property ID</b>	MTVHC2
<b>Property Type</b>	Apartment

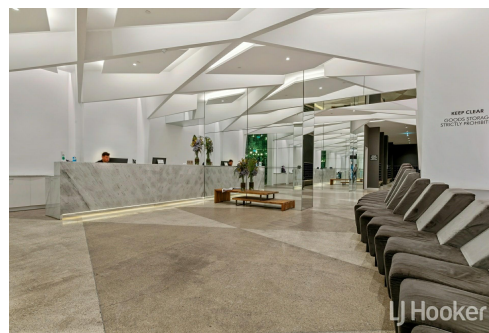
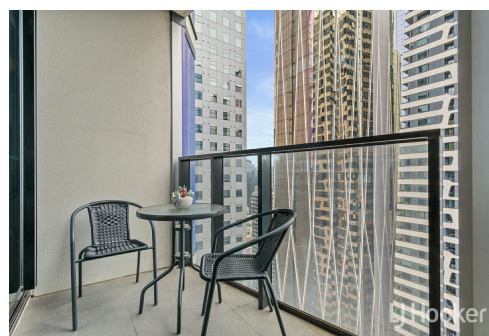
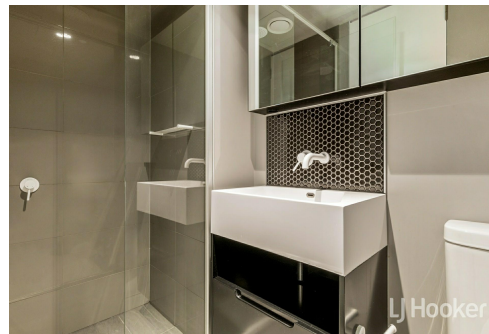
**Olia Cai 0401 084 971**

Senior Sales Consultant | [ocai.cityresmelbourne@ljhooker.com.au](mailto:ocai.cityresmelbourne@ljhooker.com.au)

**LJ Hooker City Residential (03) 9600 2166**

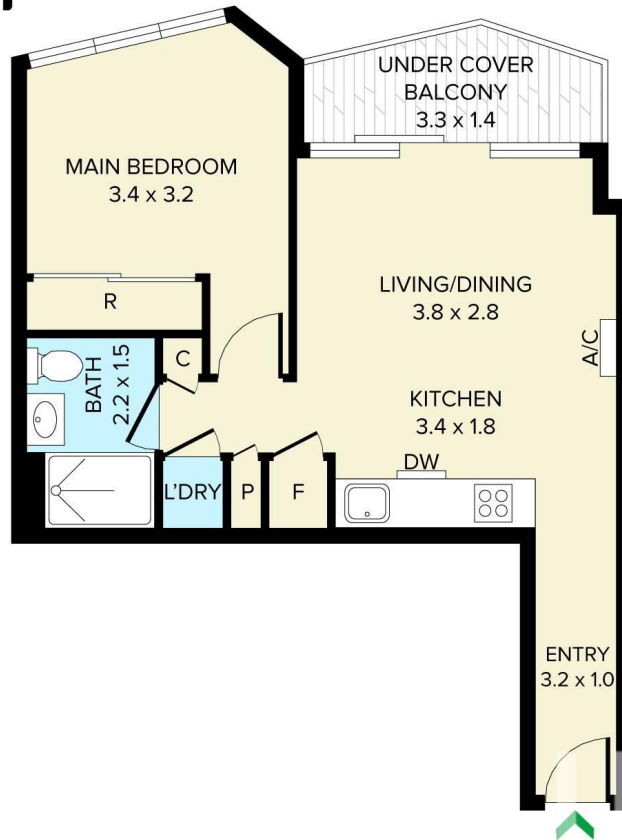
Upper Ground Floor, 439-445 Lonsdale St, MELBOURNE VIC 3000

[cityresmelbourne@ljhooker.com.au](mailto:cityresmelbourne@ljhooker.com.au) | [cityresmelbourne@ljhooker.com.au](mailto:cityresmelbourne@ljhooker.com.au)



**Disclaimer:** All information contained therein is gathered from relevant third parties sources. We cannot guarantee or give any warranty about the information provided. Interested parties must rely solely on their own enquiries.

**LJ Hooker City Residential**  
**(03) 9600 2166**



THIS PLAN IS NOT TO SCALE. MEASUREMENTS ARE INDICATIVE AND IN METRES. SITE PLAN REFLECTS APPROXIMATE POSITION OF BUILDINGS ON PROPERTY ONLY AND IS NOT AN ACCURATE REPRESENTATION OF VEGETATION AND OTHER EXTERNAL LANDSCAPE FEATURES. THIS PLAN SHOULD NOT BE RELIED UPON AND INTERESTED PARTIES SHOULD MAKE THEIR OWN ENQUIRIES.

floorpik by scandipik