
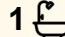
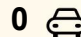




2804/442-450 Elizabeth Street, Melbourne

2  1  0 

Elevated City Living with Unmatched CBD Convenience on Elizabeth Street

Positioned high above the vibrant heart of Melbourne, 2804/442-450 Elizabeth Street offers an exceptional opportunity to secure a stylish city residence with sweeping urban outlooks. Set within a well-maintained complex, this apartment combines modern comfort with unbeatable inner-city convenience and is managed directly by the building as a hotel-style apartment, presenting an attractive option for investors seeking a streamlined arrangement.

Inside, the apartment presents a thoughtfully designed layout that maximises both space and natural light. The open-plan living and dining area flows seamlessly, creating a comfortable setting for everyday living and entertaining. A well-appointed kitchen features quality appliances and ample storage, while the bedroom offers a private retreat with built-in robes. Large windows invite in natural light and frame impressive city views, enhancing the overall sense of space and sophistication.

Step outside and enjoy everything Melbourne has to offer right at your doorstep. With easy access to public transport, renowned universities,

FOR SALE
\$490,000 - \$530,000

VIEW
By Appointment

AGENTS
Yannie Hou
0416 868 512
yhou.rowville@ljhooker.com.au

Yannie Hou
0416 868 512
yhou.rowville@ljhooker.com.au

AGENCY
LJ Hooker City Residential
(03) 9600 2166

All information contained therein is gathered from relevant third parties sources. We cannot guarantee or give any warranty about the information provided. Interested parties must rely solely on their own enquiries.

 **LJ Hooker**

shopping precincts, cafes, and restaurants, this location delivers the ultimate urban lifestyle. Whether it's a morning coffee, a quick commute, or a night out in the city, everything is within effortless reach, making day-to-day living both convenient and exciting.

An excellent opportunity in a highly sought-after location, this property is ready to impress. Enquire today to arrange your inspection and experience the lifestyle this city residence has to offer.

MORE DETAILS

Property ID	PJCHC2
Property Type	Apartment
Including	Air Conditioning

Yannie Hou 0416 868 512

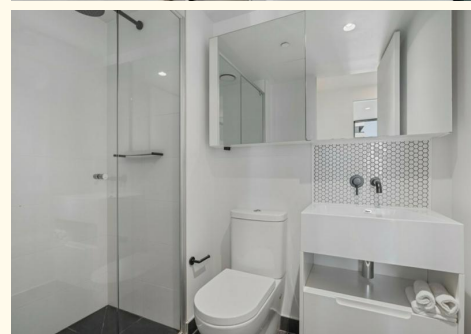
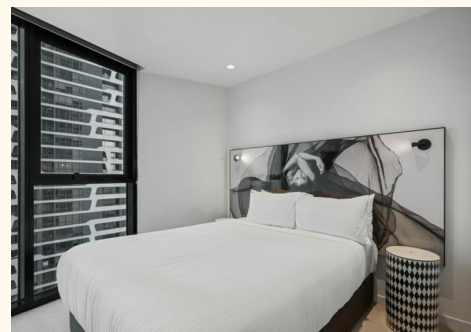
Senior Property Consultant | yhou.rowville@ljhooker.com.au

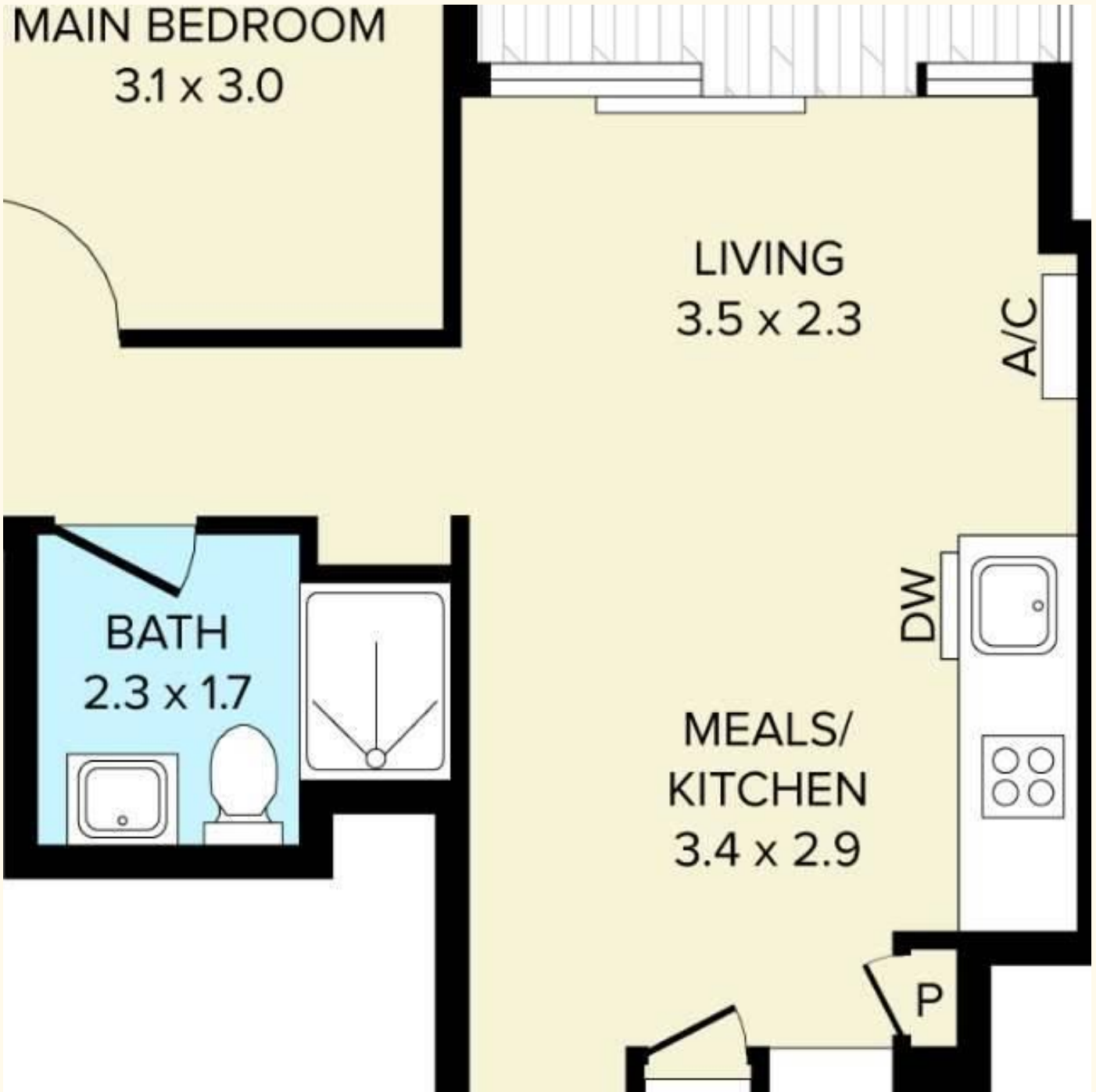
Yannie Hou 0416 868 512

Senior Property Consultant | yhou.rowville@ljhooker.com.au

LJ Hooker City Residential (03) 9600 2166

Upper Ground Floor, 439-445 Lonsdale St, MELBOURNE VIC 3000
cityresmelbourne.ljhooker.com.au |
cityresmelbourne@ljhooker.com.au





All information contained therein is gathered from relevant third parties sources.
We cannot guarantee or give any warranty about the information provided.
Interested parties must rely solely on their own enquiries.