

Melbourne, 1116/555 St Kilda Road

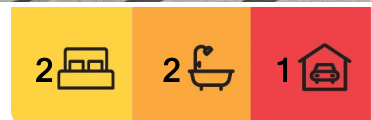
Elegant Apartment with Iconic Views in Parque on St Kilda Road

Magnificently positioned along the iconic and picturesque St Kilda Road, enjoy refined exclusive living in the luxuriously designed Parque building, designed by Fender Katsalidis. Have the best of all worlds, with doorstep public transport and access to the major roads of inner-city Melbourne without effort and fuss. Wake up to views down St Kilda Road, across the historic Wesley College and have the finest of Albert Park Lake and Fawkner Park just a stone's throw away,

Step into this Eleventh level 2 Bedroom apartment that offers amazing views down St Kilda Road, across Wesley College's historic grounds, with expansive floor to ceiling windows across the parqueted floor main living/dining area and master bedroom. Entertain guests in the European style kitchen, with Miele stainless steel appliances throughout offering luxury and convenience. European laundry and 2 well-appointed bathrooms offer a hotel-quality lifestyle.



Disclaimer: All information contained therein is gathered from relevant third parties sources. We cannot guarantee or give any warranty about the information provided. Interested parties must rely solely on their own enquiries.



For Sale
\$700,000-\$760,000

View
Thu 19th Jun @ 12:30PM - 12:50PM

Contact
Olia Cai
0401 084 971
ocai.cityresmelbourne@ljhooker.com.au

Olia Cai
0401 084 971
ocai.cityresmelbourne@ljhooker.com.au

LJ Hooker City Residential
(03) 9600 2166

Both bedrooms feature views across the park views and BIR, with the master bedroom featuring a well-appointed en-suite.

*Immediate access to Commercial Road, St Kilda Road, Princes Highway

*Walking distance to Fawkner Park, Albert Park Lake

*1km to Prahran Market the heart of Prahran Shopping District

*Secure lock-up storage & secure car park

*Facilities include fobs, intercom, parking, lift access, secure parking, secure entrance, security camera, sauna/ spa/ steam room, gym room, swimming pool, rooftop, community garden.

Don't miss out on this amazing opportunity to get this beautiful-view apartment to upgrade your lifestyle.

Whilst we endeavour to represent this property information to the best of our knowledge and have no reason to doubt any inaccuracy, this information has been provided to us by the property owner and we therefore accept no responsibility and disclaim all liability in respect to any errors, omissions, inaccuracies or misstatements in any information.

More About this Property

Property ID	HBZHC2
Property Type	Apartment
Including	Air Conditioning Alarm Intercom Built-in-Robes Car Parking - Basement Security Access

Olia Cai 0401 084 971

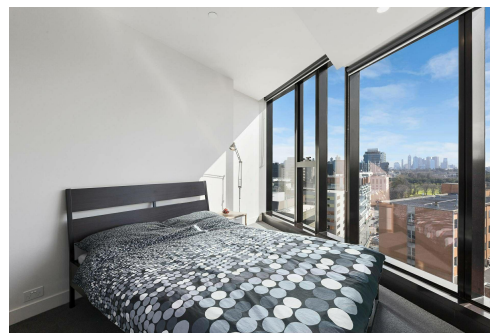
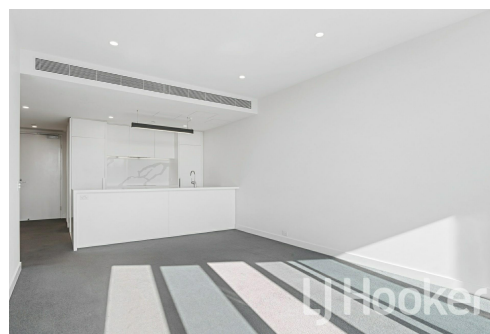
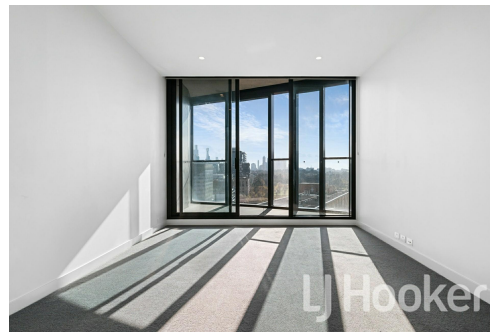
Senior Sales Consultant | ocai.cityresmelbourne@ljhooker.com.au

Olia Cai 0401 084 971

Senior Sales Consultant | ocai.cityresmelbourne@ljhooker.com.au

LJ Hooker City Residential (03) 9600 2166

Upper Ground Floor, 439-445 Lonsdale St, MELBOURNE VIC 3000
cityresmelbourne.ljhooker.com.au | cityresmelbourne@ljhooker.com.au



Disclaimer: All information contained therein is gathered from relevant third parties sources. We cannot guarantee or give any warranty about the information provided. Interested parties must rely solely on their own enquiries.

LJ Hooker City Residential
(03) 9600 2166

