



## Meerschaum Vale, 313 Marom Creek Road Peace, Quiet, Lifestyle

Located just 12km from the Alstonville Village, 21km to Ballina with its white beaches and Ballina Byron Gateway Airport, this property will help you escape the busy outside world. Privacy guaranteed. Views across grazing land to Buckumbil Mountain. This is truly a sanctuary worth inspecting. 26.38ha or 65acres (approx.) two homes, both private with splendid rural views.

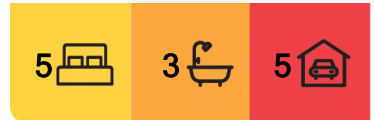
The Dairy, converted and renovated features open plan living and dining. Two bedrooms, both with the outlook. Galley style kitchen. Spacious bathroom. All modern features adorn. Currently tenanted until 7th November 2024.

The Main home, a new construction is completely private. Open plan kitchen, dining and living. High ceilings. Three bedrooms. Master including ensuite and those amazing views. Entertaining is well taken care of with the covered 13 metre deck, again with the views. Currently tenanted with an expired continuing lease.

A Large Colorbond shed with power is handy to store all the big toys or a workshop for the handy man or woman.



**Disclaimer:** All information contained therein is gathered from relevant third parties sources. We cannot guarantee or give any warranty about the information provided. Interested parties must rely solely on their own enquiries.



**For Sale**  
FOR SALE - \$1,399,000 - \$1,499,000

**View**  
[ljhooker.com.au/16DXF55](http://ljhooker.com.au/16DXF55)

**Contact**  
**Robbie McRae**  
0478 721 474  
[rmcrae.alstonville@ljhooker.com.au](mailto:rmcrae.alstonville@ljhooker.com.au)

**LJ Hooker Alstonville**  
**(02) 6628 1163**

This is truly an opportunity to purchase a private property, not visible from the road. Room for cattle, horses, minibikes and adventures. Do not delay, inspect today with exclusive agent, Robbie McRae

Located just 12km from the Alstonville Village, 21km to Ballina with its white beaches and Ballina Byron Gateway Airport, this property will help you escape the busy outside world. Privacy guaranteed. Views across grazing land to Buckumbil Mountain.

- 26.38ha / 65acres (approx.) grazing and lifestyle
- Two homes, Both private from the other
- Converted dairy, Modern, Two bedroom
- Open plan, Big views
- New timber home, Modern, Three bedrooms
- Master with ensuite and views
- Large deck, Amazing outlook
- Separate lock up garage
- Big Colorbond shed, power
- Fully fenced, Suitable for cattle or horses

## More About this Property

<b>Property ID</b>	16DXF55
<b>Property Type</b>	AcreageSemi-rural
<b>Land Area</b>	26.38 hectare

### Robbie McRae 0478 721 474

Sales Consultant/Licensed Real Estate Agent |  
rmcrae.alstonville@ljhooker.com.au

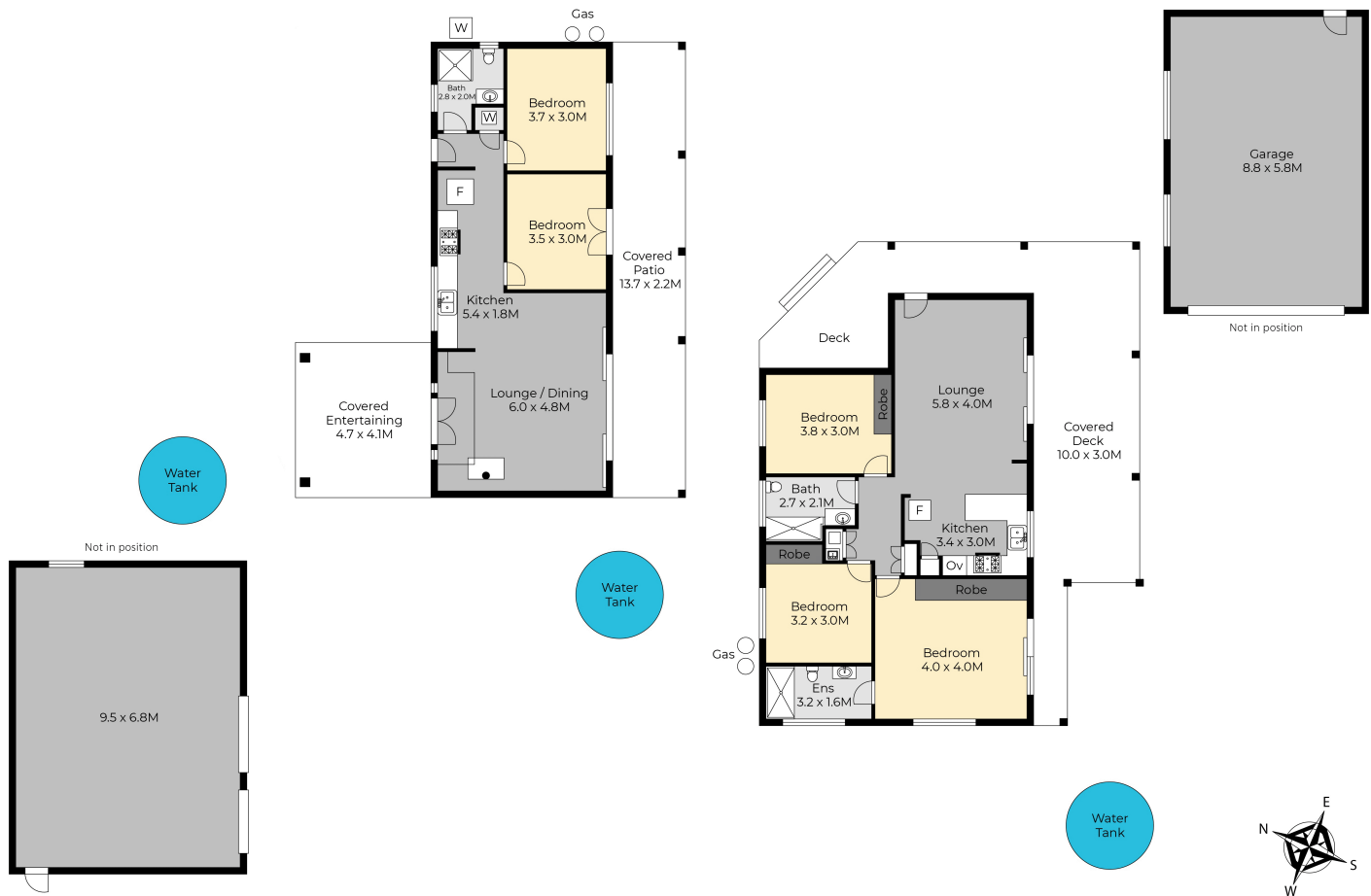
### LJ Hooker Alstonville (02) 6628 1163

Shop 16 The Plaza, ALSTONVILLE NSW 2477  
alstonville.ljhooker.com.au | alstonville@ljhooker.com.au



**LJ Hooker Alstonville**  
**(02) 6628 1163**

**Disclaimer:** All information contained therein is gathered from relevant third parties sources. We cannot guarantee or give any warranty about the information provided. Interested parties must rely solely on their own enquiries.



### 313 Marom Creek Road, Meerschaum Vale

Disclaimer: For illustrative purpose only Floor plan measurements, size, and scale are approximate we take no responsibility for omission and errors.

