



52 Portmarnock Close, Medowie

LIVING THE DREAM

You wake in the morning with the sun streaming through the main bedroom, you make your morning coffee and enjoy the view over the 9th hole of the highly recognised Pacific Dunes Golf and Country Club. Welcome to 52 Portmarnock CI Medowie.

The vendors of this very well-appointed home have relocated already and need this sold sooner rather than later.

With four large bedrooms, two living areas, open plan dining and stunning kitchen looking out over the course towards the pool, clubhouse, and restaurant you'll be met by serenity. All you need to do is pack your clubs and start living.

Our vendors must sell and will be considering all genuine offers presented.

All information contained herein is gathered from sources we consider to be reliable. However, we, LJ Hooker Nelson Bay cannot guarantee or give any warranty about the information provided. Interested parties must solely rely on their own enquiries. Any personal information given to us during the course of the campaign will be kept on our database for follow up and to market other services and opportunities unless instructed in writing. View our privacy policy here -

4  2  2 

FOR SALE
Contact Agent

VIEW
Sat 11th Apr @ 12:15PM - 12:45PM

AGENTS
Ryan O'Connor
0417 977 476
roconnor.medowie@ljhooker.com.au

AGENCY
LJ Hooker Nelson Bay
(02) 4984 2400

All information contained therein is gathered from relevant third parties sources.
We cannot guarantee or give any warranty about the information provided.
Interested parties must rely solely on their own enquiries.

 **LJ Hooker**

<https://www.ljhooker.com.au/legals/privacy-policy>

MORE DETAILS

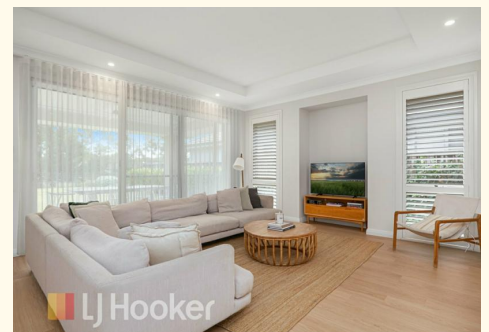
Property ID	13W5F6R
Property Type	House
Land Area	606 m2
Including	Ensuite
	Air Conditioning
	Outdoor Entertaining
	Floorboards
	Secure Parking
	Fully Fenced
	Remote Garage

Ryan O'Connor 0417 977 476

Sales Executive | Licensed Real Estate Agent - Class 2 |
roconnor.medowie@ljhooker.com.au

LJ Hooker Nelson Bay (02) 4984 2400

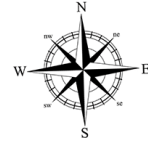
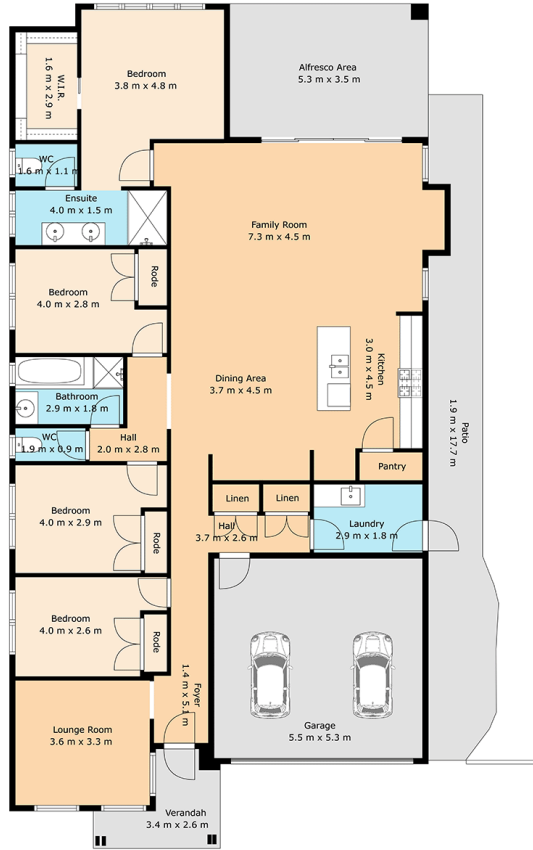
31 Stockton Street, NELSON BAY NSW 2315
nelsonbay.ljhooker.com.au | nelsonbay@ljhooker.com.au



All information contained therein is gathered from relevant third parties sources.
We cannot guarantee or give any warranty about the information provided.
Interested parties must rely solely on their own enquiries.

 **LJ Hooker**

52 Portmarnock Close Medowie



Total: 169 m2
 1st Floor: 169 m2
 Excluded Areas: Garage: 29 M2, Verandah: 6 M2, Alfresco Area: 19 M2,
 Patio: 26 M2, Walls: 12 M2

ALL SIZES, DIMENSIONS & ELEMENTS ARE APPROXIMATE & INTENDED FOR VIEWING PURPOSES ONLY
 © 2026 Rite Angle Media - All rights reserved
 www.riteanglemedia.com.au



All information contained therein is gathered from relevant third parties sources.
 We cannot guarantee or give any warranty about the information provided.
 Interested parties must rely solely on their own enquiries.

