

3 Medinah Point, Medowie

PICK OF THE CROP

Well, where do we start? We could start with the fact this home is located in a gated cul-de-sac within the ever popular Pacific Dunes Golf and Country Club.

Do we start by pointing out this sizeable family home is situated on a huge block of over 900sqm and overlooks the 15th green?

Or perhaps it's the family friendly layout, quality inclusions and high end finishes?

In fairness where we start isn't important when compared to who finishes up securing this gorgeous family home. Our vendor has committed to relocating closer to family and needs to jump this last hurdle before she can move.

All information contained herein is gathered from sources we consider to be reliable. However, we, LJ Hooker Nelson Bay cannot guarantee or give any warranty about the information provided. Interested parties must solely rely on their own enquiries. Any personal information given to us during the course of the campaign will be kept on our database for follow up and to market other services and opportunities unless instructed in writing. View our privacy policy here - <https://www.ljhooker.com.au/legals/privacy-policy>

All information contained therein is gathered from relevant third parties sources. We cannot guarantee or give any warranty about the information provided. Interested parties must rely solely on their own enquiries.

4 🏠 2 🚿 2 🚗

FOR SALE

Please Call

AGENTS

Ryan O'Connor

0417 977 476

roconnor.medowie@ljhooker.com.au

AGENCY

LJ Hooker Nelson Bay

(02) 4984 2400

 LJ Hooker

MORE DETAILS

Property ID 13X2F6R
Property Type House
Land Area 918 m2
Including Ensuite
Air Conditioning
Dishwasher
Outdoor Entertaining
Built-in-Robes
Secure Parking
Remote Garage
Solar Hot Water

Ryan O'Connor 0417 977 476

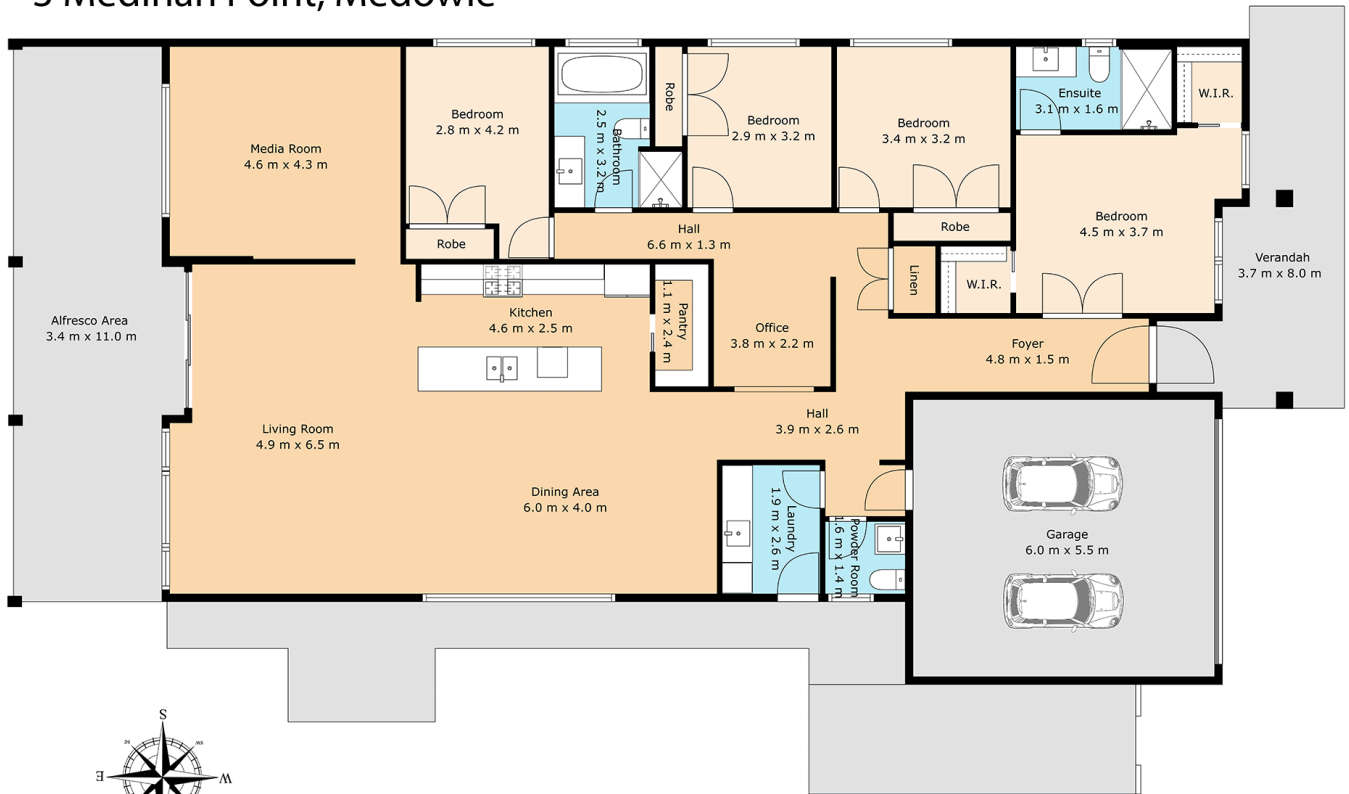
Sales Executive | Licensed Real Estate Agent - Class 2 |
roconnor.medowie@ljhooker.com.au

LJ Hooker Nelson Bay (02) 4984 2400

31 Stockton Street, NELSON BAY NSW 2315
nelsonbay.ljhooker.com.au | nelsonbay@ljhooker.com.au



3 Medinah Point, Medowie



Total: 198 m²
 1st Floor: 198 m²
 Excluded Areas: Garage: 33 M², Alfresco Area: 34 M²
 Verandah: 19 M², Walls: 12 m²

ALL SIZES, DIMENSIONS & ELEMENTS ARE APPROXIMATE & INTENDED FOR VIEWING PURPOSES ONLY
 © 2026 Rite Angle Media - All rights reserved
 www.riteanglemedia.com.au

LJ Hooker
 Medowie

All information contained therein is gathered from relevant third parties sources.
 We cannot guarantee or give any warranty about the information provided.
 Interested parties must rely solely on their own enquiries.

LJ Hooker