

6/11 Bay Drive, Meadowbank

Beautifully Appointed Lifestyle Abode in Prime Waterfront Setting!

Perfectly positioned within a sought-after security complex, this beautifully presented apartment delivers the ultimate blend of waterfront tranquility with everyday convenience in a prime Meadowbank address. Bathed in natural light from its prized north-east aspect, it offers a turnkey lifestyle opportunity within footsteps of the station and ferry wharf and with a myriad of shops and cafés, restaurants, and fitness facilities at the doorstep. Fresh neutral interiors create an inviting sense of space, with a generous open plan living and dining area flowing to a covered entertaining balcony overlooking the complex landscaped central gardens. A sleek stone kitchen is equipped with stainless steel gas appliances, while the well-sized bedroom features a built-in wardrobe and direct balcony access. Further highlights include a stylishly appointed bathroom plus a separate internal laundry, AV intercom access as well as lift access to a secure basement car space and ducted air conditioning for year-round comfort. Equally appealing as a readymade first home, low maintenance downsizer or a standout investment, this is an exceptional opportunity to secure a quality residence, within footsteps of nearby waterfront parklands and foreshore walks, while remaining

1 1 1

FOR SALE
Price Guide \$580,000

VIEW
Sat 27th Jun @ 2:00PM - 2:30PM

AGENTS
George El Daghl
0417 207 256
george@ljhcampsie.com.au

AGENCY
LJ Hooker Campsie
(02) 9789 6088

All information contained therein is gathered from relevant third parties sources. We cannot guarantee or give any warranty about the information provided. Interested parties must rely solely on their own enquiries.



only 25 minutes from the CBD.

- Beautifully appointed and dressed in fresh neutral tones
- Wonderfully spacious layout with open plan living/dining
- Sun washed undercover balcony ideal for entertaining
- Serene leafy outlooks over the complex central gardens
- Streamlined stone kitchen with s/steel gas appliances
- Well-sized bedroom with built-in robe opens to balcony
- Stylishly appointed bathroom with combined bath/shower
- Full internal laundry, ducted a/c, AV intercom access
- Convenient level lift access to secure basement car space
- Readymade investment/first home in the heart of Meadowbank
- Village Plaza at ground level with shops, cafés and gyms
- Waterfront complex a stroll to the station, ferries to CBD
- Easy access to tranquil waterfront parks, walking trails

Property Size: Total 78sqm / Internal 63sqm approx.

Strata Levies: \$2,046.00 per quarter approx.

Council Rates: \$367.00 per quarter approx.

Water Rates: \$202.00 per quarter approx.

Currently Leased: \$605pw

Expires: 7 April, 2027

Details: George El Daghl ~ 0417 207 256

DISCLAIMER: Some images may have been digitally enhanced or virtually staged for marketing purposes. While care has been taken in preparing this material, no warranty is given as to its accuracy or completeness, and no liability is accepted for any errors or omissions.

DISCLAIMER: All information provided has been gathered with due care and is believed to be reliable; however, no guarantee is made as to its accuracy. We accept no liability for any mistakes, omissions, or discrepancies. Interested parties should make their own enquiries and rely on their own investigations.

MORE DETAILS

Property ID	MMVF8V
Property Type	Apartment

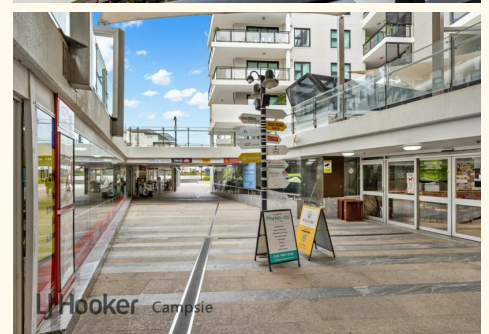
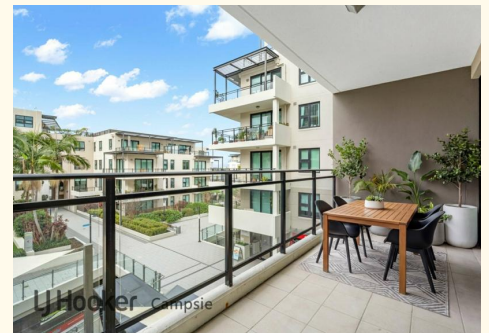
George El Daghl 0417 207 256

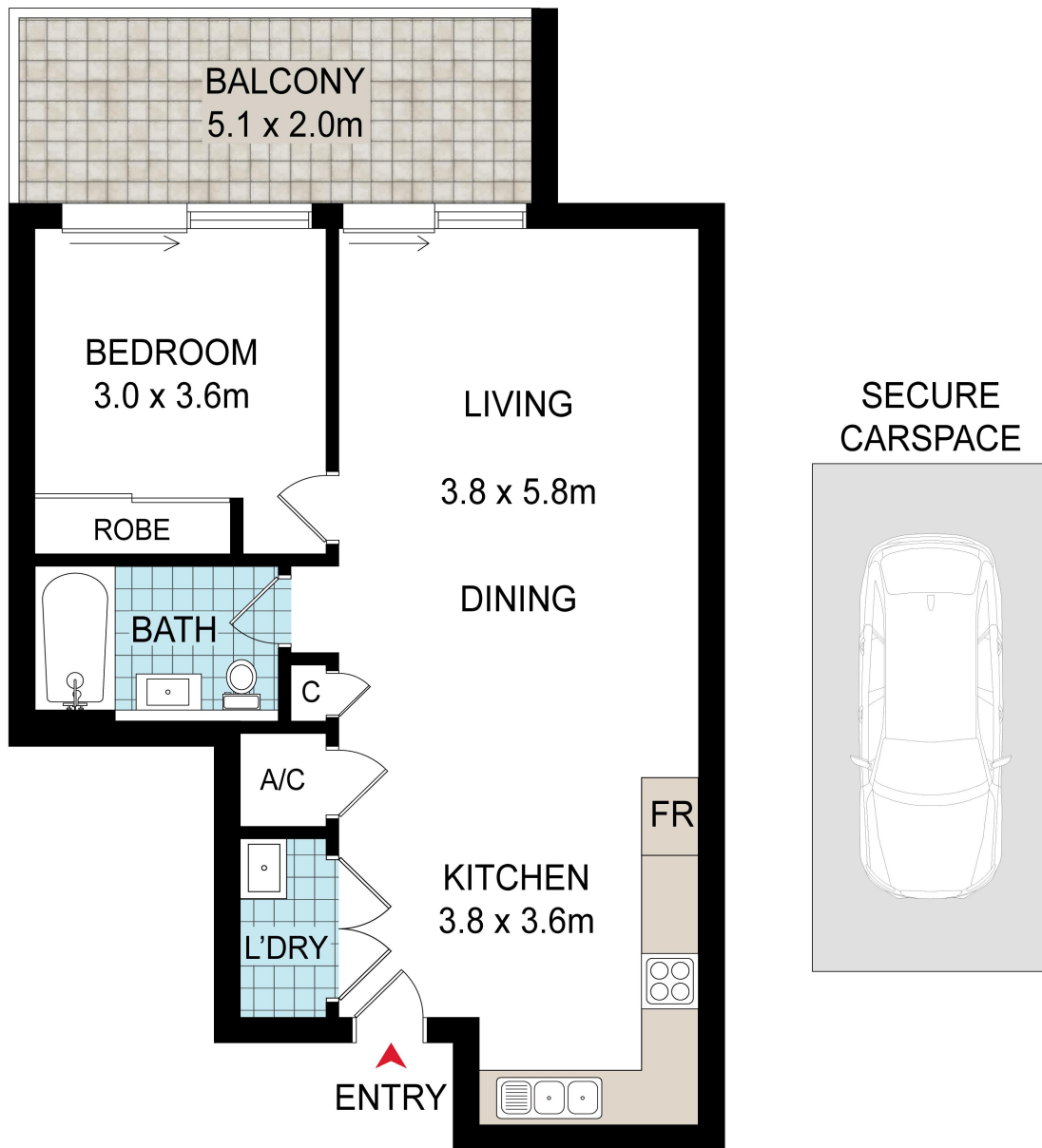
Sales Executive | george@ljhcampsie.com.au

LJ Hooker Campsie (02) 9789 6088

197 Beamish Street, CAMPSIE NSW 2194

campsie.ljhooker.com.au | info@ljhcampsie.com.au





6/11 BAY DRIVE,
MEADOWBANK

DISCLAIMER: WE HAVE OBTAINED ALL INFORMATION IN THIS DOCUMENT FROM SOURCES WE BELIEVE TO BE RELIABLE; HOWEVER, WE CANNOT GUARANTEE ITS ACCURACY. PROSPECTIVE PURCHASERS ARE ADVISED TO CARRY OUT THEIR OWN INVESTIGATIONS