

18 Galveston Court, Meadow Springs

Secluded 3x2 Backing Directly onto the Golf Course

- 3x2x2
- 276m² lot in small strata complex
- 109m² floor area
- 2015 build
- Strata levy only \$159.02 per quarter covers common areas and visitors parking

Situated on the award-winning Meadow Springs Golf Course, 18 Galveston Court is a secluded piece of paradise.

Whilst sitting on the patio surrounded by 200-year-old Tuart trees, you'll find it hard to believe you're only minutes from schools, medical services, and Meadow Springs Shopping Centre.

Built in 2015 this modern and neutral home has been finished to a high standard.

Boasting a modern kitchen with stone benchtops, big fridge cavity, dishwasher and double pantry, all open plan to living & dining areas with view of the golf course whilst you are cooking.

3  2  2 

FOR SALE

Please Call

AGENTS

Tony Dos Santos

0466 550 512

tdossantos.mandurah@ljhooker.com.au

AGENCY

LJ Hooker Mandurah

(08) 9586 5555

All information contained therein is gathered from relevant third parties sources.
We cannot guarantee or give any warranty about the information provided.
Interested parties must rely solely on their own enquiries.

 **LJ Hooker**

Shoppers entrance through to the tiled open plan kitchen, living and dining area complete with access to the patio.

Two minor bedrooms (one faces golf course) with ceiling fans, built in floor to ceiling robes and the master to the street front with spacious ensuite, walk in robe and fan.

Perfect for downsizers looking for peace and quiet with a rural outlook that don't want a big block to take care of.

It would also appeal to anyone looking for a lock and leave property, time poor professionals, or FIFO workers.

There's just so much to love about this home you really need to see it to appreciate what's on offer:

- Double garage with steel shelving
- New gas hot water system
- 5 KW Sungrow Solar
- Modern laundry
- Good size Alfresco with ceiling fan
- Low maintenance gardens with garden shed
- Family bathroom with shower & bath and separate toilet
- Split A/C in master and living areas
- Quiet area, on the golf course
- Modern, spacious, and neutral décor
- Close to amenities, train station, and easy freeway access
- High ceilings
- Strata levy only \$151.90 per quarter covers common areas and visitors parking.

Beautifully cared for by the current owner and priced to sell you'll need to be quick to secure this one.

So, call Tony on 0466550512 today to book your private inspection.

MORE DETAILS

| | |
|---------------|---------|
| Property ID | 4SWMFF2 |
| Property Type | House |
| House Size | 109 m2 |
| Land Area | 276 m2 |

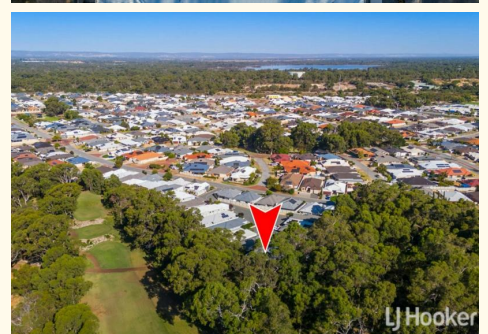
Tony Dos Santos 0466 550 512

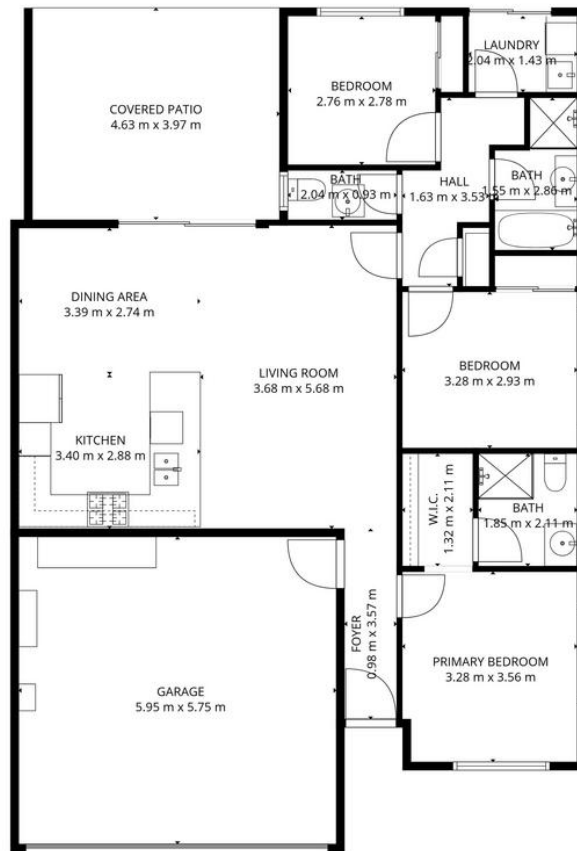
Sales Executive | tdossantos.mandurah@ljhooker.com.au

LJ Hooker Mandurah (08) 9586 5555

68 Mandurah Terrace, MANDURAH WA 6210

mandurah.ljhooker.com.au | hello.south@ljhpxp.com.au





TOTAL: 99 m2
 1st floor: 99 m2
 EXCLUDED AREAS: GARAGE: 34 m2, COVERED PATIO: 18 m2, WALLS: 10 m2

FLOOR PLAN CREATED BY CUBICASA APP. MEASUREMENTS DEEMED HIGHLY RELIABLE BUT NOT GUARANTEED.