



45 Gleason Street, Mcdowall

SINGLE LEVEL HOME IN PEACEFUL POCKET!

This well maintained 3 bedroom low-set brick home is located on a 584sqm block in this sought-after pocket of McDowall and close to parklands. Perfect for young families, downsizers or as a set and forget investment.

Features

- Light filled living, dining and kitchen
- Adjacent study / MPR space
- Updated bathroom
- Air conditioning to family and dining
- Master with ensuite, built in robe and AC
- Two further bedrooms
- Low maintenance courtyard
- Plenty of storage both inside and out
- 2 car garage with remote
- Rental potential \$750-\$800 per week

This peaceful, family-friendly suburb is known for its leafy streets, spacious homes, and relaxed lifestyle and offers the perfect balance between suburban tranquility and everyday convenience, with parks, walking tracks, and nature reserves right on the doorstep. Just a short drive to major shopping centres like Westfield Chermside and

3  2  2 

FOR SALE
OPEN TO OFFERS

AGENTS

Lucy West
0422 175 322
lucy.west@ljhooker.com.au

AGENCY

LJ Hooker Stafford
(07) 3357 1888

All information contained therein is gathered from relevant third parties sources.
We cannot guarantee or give any warranty about the information provided.
Interested parties must rely solely on their own enquiries.

 **LJ Hooker**

well-connected by public transport and main roads, city access is easy. With green surroundings and quality amenities, McDowall is an ideal suburb choice!

This widely appealing property is sure to draw huge interest. We welcome your inspection.

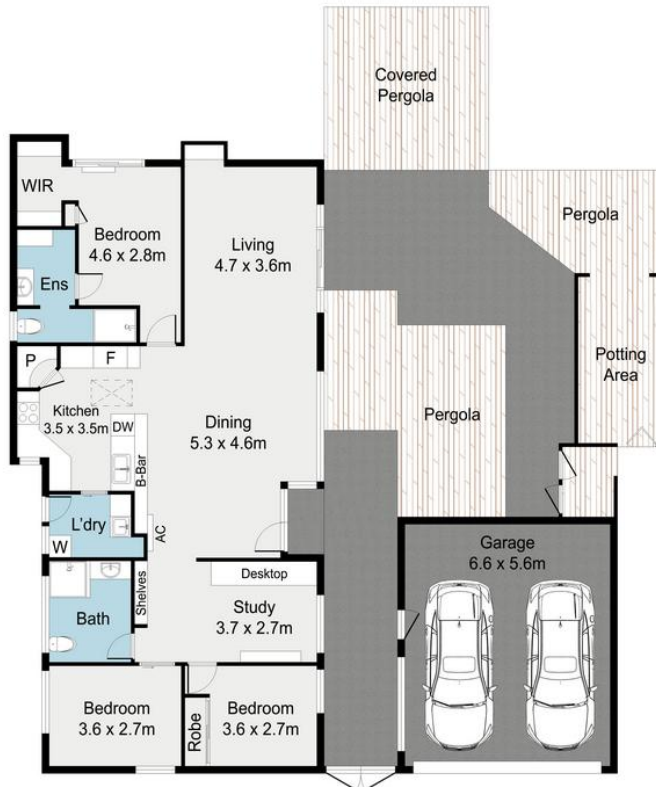
MORE DETAILS

Property ID	1E32F4N
Property Type	House
Land Area	584 m2
Including	Ensuite
	Outdoor Entertaining
	Fully Fenced

Lucy West 0422 175 322
Sales & Marketing Consultant | lucy.west@ljhooker.com.au

LJ Hooker Stafford (07) 3357 1888
205 Stafford Road, STAFFORD QLD 4053
stafford.ljhooker.com.au | stafford@ljhooker.com.au





45 Gleason St, McDowall



DISCLAIMER: No liability for the accuracy of details contained within our floor plans. All plans are drawn and also checked to the best of our ability, however information contained in our floor plans such as area calculations are approximate, and have not been surveyed or drawn to scale. Our floor plans are for representational purposes only and should be used as such. Do not attempt to refer to our floor plans for structural or detailed information.

APPROX SQM
 Internal: 125 SQM
 External: 155 SQM