



**Sold**



4 Mayne Street, Maydena

3 1 2

## Charming Maydena Home &ndash; Walk to Bike Park & Outdoor Adventures

Brookside is a beautifully renovated three-bedroom cottage tucked away in a peaceful pocket of Maydena, offering warm interiors, thoughtful modern updates, and effortless everyday living. Polished timber floors, a well-considered layout, and light-filled spaces create an inviting atmosphere that immediately feels like home.

The kitchen and dining area flow seamlessly onto a generous deck&mdash;an ideal spot for morning coffee or relaxed outdoor dining&mdash;overlooking a private, fully fenced leafy yard. Practicality meets versatility with secure powered container storage and a separate shed, perfect for bikes, tools, or adventure gear.

Whether enjoyed as a permanent residence, a family holiday retreat, or a high-performing short-stay investment, this property presents outstanding flexibility in one of Tasmania's fastest-growing lifestyle destinations.

### Key Features:

Renovated three-bedroom home with polished timber floors

### FOR SALE

Please Call

### AGENTS

Nitin Joshi  
0452 106 293  
njoshi@ljhpinnacle.com.au

### AGENCY

LJ Hooker Pinnacle Property  
(03) 6272 8177

All information contained therein is gathered from relevant third parties sources.  
We cannot guarantee or give any warranty about the information provided.  
Interested parties must rely solely on their own enquiries.



Separate living area for added comfort and functionality  
Kitchen and dining space opening directly onto the deck  
Expansive deck overlooking a private, fully fenced yard  
Separate storage shed plus secure powered container storage  
Easy walking distance to the world-renowned Maydena Bike Park and local playground

**Lifestyle & Location:**

Positioned in the heart of Maydena, Brookside places you at the gateway to some of Tasmania's most celebrated natural attractions. Enjoy mountain biking, bushwalking, fishing, and exploration right from your doorstep, with Mt Field National Park, Marriott Falls, Growling Swallet Cave, and the seasonal Fagus all just a short drive away.

Whether you are searching for a peaceful escape, a family adventure base, or a proven investment opportunity, this home delivers on every front.

This is a rare opportunity to secure a quality property in a tightly held location. Contact us today to arrange your private inspection.

The information contained herein has been supplied to us and we have no reason to doubt its accuracy; however, we cannot guarantee it. Accordingly, all interested parties should make their own enquiries to verify this information.

**MORE DETAILS**

|               |                                                                                                                    |
|---------------|--------------------------------------------------------------------------------------------------------------------|
| Property ID   | H1J1F                                                                                                              |
| Property Type | House                                                                                                              |
| House Size    | 116 m2                                                                                                             |
| Land Area     | 964 m2                                                                                                             |
| Including     | Air Conditioning<br>Toilets (2)<br>Deck<br>Dishwasher<br>Floorboards<br>Fully Fenced<br>Wood heater<br>Fruit trees |

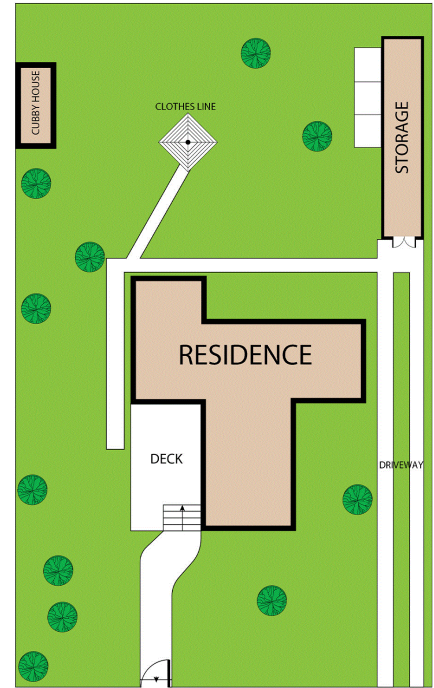
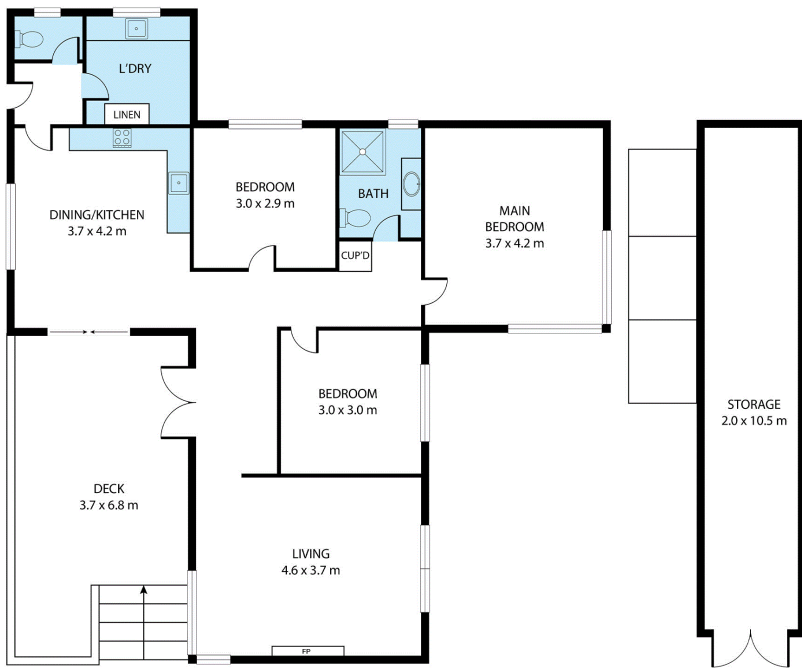
**Nitin Joshi 0452 106 293**

Property Representative | njoshi@ljhpinnacle.com.au

**LJ Hooker Pinnacle Property (03) 6272 8177**

402 Main Road, GLENORCHY TAS 7010  
pinnacleproperty.ljhooker.com.au | hello@ljhpinnacle.com.au





(NOT IN POSITION)



### 4 Mayne Street, Maydena

House area: 116 sqm

Areas and dimensions are approximate and therefore this floor plan should only be used for illustrative purposes.

Real Estate Marketing by [nextcreative.com.au](http://nextcreative.com.au)

House Area: 116 sqm  
 Deck: 25 sqm  
 Storage: 21 sqm

