



17 South Crescent, Maydena

Charming Maydena Home & Lifestyle & Income Opportunity

Discover the charm of country living with this delightful 3-bedroom, 2-bathroom home in the peaceful township of Maydena. Set on a generous 765 sqm block, the property offers a perfect balance of comfort, outdoor space, and lifestyle appeal — ideal for families, investors, or those seeking a serene retreat.

Key Features:

Bedrooms: 3 spacious bedrooms with built-in storage


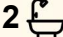

Bathrooms: 2 modern bathrooms and a separate toilet for convenience and comfort

Garage: Single garage providing secure parking and additional storage

Outdoor Space: Expansive yard perfect for gardening, play, or relaxing in a tranquil setting

Tenancy: Currently tenanted at \$450/week until May 2026 — strong income opportunity

Step inside to a welcoming living area with a cozy wood heater, creating the perfect space for cooler evenings. The open-plan kitchen

3  2  4 

FOR SALE

Please Call

AGENTS

Nitin Joshi

0452 106 293

njoshi@ljhpinnacle.com.au

AGENCY

LJ Hooker Pinnacle Property

(03) 6272 8177

All information contained therein is gathered from relevant third parties sources.

We cannot guarantee or give any warranty about the information provided.

Interested parties must rely solely on their own enquiries.



and dining area is both functional and stylish, ideal for entertaining or family meals.

Lifestyle & Location:

Maydena is renowned for its stunning natural beauty and outdoor adventures. Enjoy a short walk to the Maydena Bike Park, and easy access to hiking trails, mountain biking, and the picturesque Juneecave State Reserve. Nearby Mount Field National Park offers breathtaking landscapes and abundant wildlife. The local community is friendly and convenient, with cafes, shops, and recreational facilities just minutes away.

This property is more than a home — it's a gateway to a lifestyle filled with nature, tranquility, and opportunity. Perfect as a long-term home, weekend retreat, or income-producing investment.

Don't miss your chance — contact us today to arrange a private inspection!

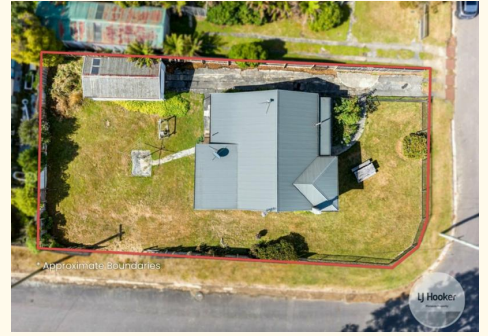
The information contained herein has been supplied to us and we have no reason to doubt its accuracy, however, cannot guarantee it. Accordingly, all interested parties should make their own enquiries to verify this information.

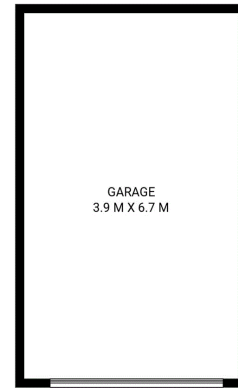
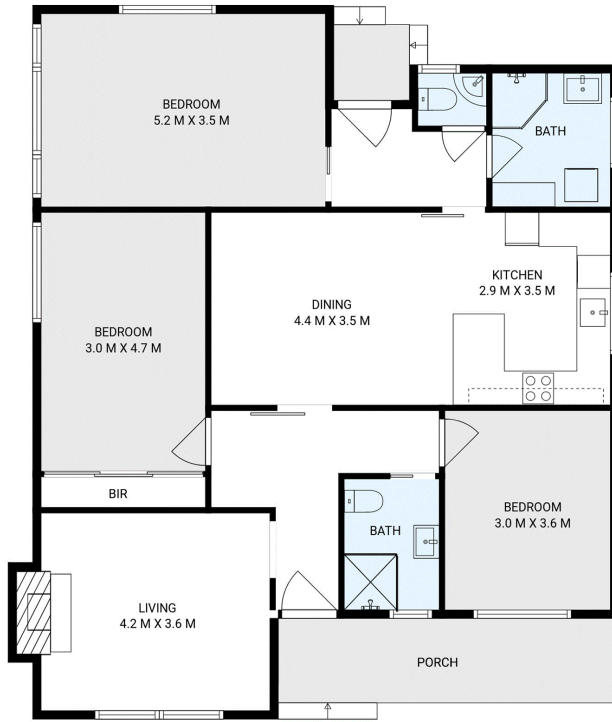
MORE DETAILS

Property ID	CJ1F
Property Type	House
House Size	119 m2
Land Area	765 m2
Including	Air Conditioning Dishwasher Built-in-Robes

Nitin Joshi 0452 106 293
Property Representative | njoshi@ljhpinnacle.com.au

LJ Hooker Pinnacle Property (03) 6272 8177
402 Main Road, GLENORCHY TAS 7010
pinnacleproperty.ljhooker.com.au | hello@ljhpinnacle.com.au





17 South Crescent, Maydena

House area: 119 sqm

Areas and dimensions are approximate and therefore this floor plan should only be used for illustrative purposes.

Real Estate Marketing by nextcreative.com.au

House Area: 119 sqm

Garage: 26 sqm

Total Usable Area: 145 sqm

