

Mawson Lakes, 8 Mallard Crescent

Inspection by appointment.



A Wonderful Family Home in the heart of Mawson Lakes!

Built in 2002, this 4-bedroom family home situated in the heart of Mawson Lakes offers a wonderful lifestyle being just moments to nearby Shearwater Lake and Reserve. Low maintenance yards guarantee you'll have more time to spend with family. The home offers two living areas and an outdoor undercover entertaining area perfect for a BBQ with friends!

Features include:

- *Land Size 375sqm (approx.)
- * 4 bedrooms all with built in robes, master with walk in robe and ensuite bathroom
- * Open plan family and meals
- * Kitchen with breakfast bar, dishwasher, gas cooktop and oven
- * Central lounge and additional living area

For Sale
UNDER CONTRACT

View
ljhooker.com.au/2BGYGJU

Contact
Shaun Roberts
0435 367 534
shaunr@ljhsales.com.au



Disclaimer: All information contained therein is gathered from relevant third parties sources. We cannot guarantee or give any warranty about the information provided. Interested parties must rely solely on their own enquiries.

LJ Hooker Greenwith | Golden Grove
| Mawson Lakes | Modbury
(08) 8289 6660

- * Ducted reverse cycle air conditioning
- * Central main bathroom with separate toilet
- * 2.7m ceilings throughout
- * 4.2kW Solar panel system with a 44c feed in (rebate until 30th June 2028)
- * Freshly painted throughout
- * 6 Security cameras linked to a monitor screen
- * Rear verandah outdoor entertaining
- * Roller blinds throughout
- * Tool shed
- * Double auto garage with internal access
- * Roller door access to rear yard with shelter offering additional undercover storage for trailer or jet ski
- * Low maintenance gardens

Close to Mawson Lakes Primary School, Endeavor College and Mawson Lakes Central make this a super convenient location for young growing families. Also perfect for those downsizing looking to be close to shops, public transport, restaurants and the many lakes and attractions within the suburb.

Enquire today.

All information provided has been obtained from sources we believe to be accurate, however, we cannot guarantee the information is accurate and we accept no liability for any errors or omissions (including but not limited to a property's land size, floor plans and size, building age and condition). Interested parties should make their own enquiries and obtain their own legal and financial advice. Should this property be scheduled for auction, the Vendor's Statement may be inspected at either of our two LJ Hooker Property Specialists Real Estate offices for 3 consecutive business days immediately preceding the auction and at the auction for 30 minutes before it starts.

RLA 208516

More About this Property

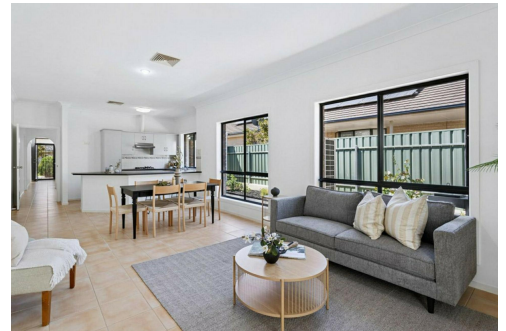
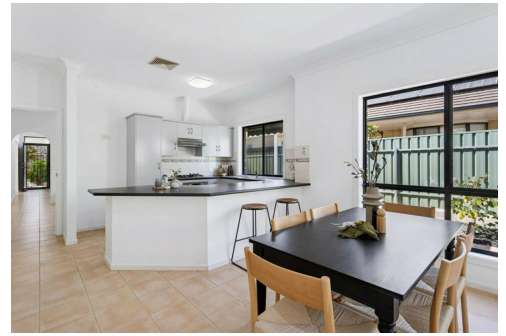
Property ID	2BGYGJU
Property Type	House
House Size	182 m2
Land Area	375 m2
Including	Air Conditioning Ducted Cooling Ducted Heating Outdoor Entertaining Built-in-Robes Secure Parking Fully Fenced

Shaun Roberts 0435 367 534

Managing Partner | Sales Specialist | shaunr@ljhsales.com.au

LJ Hooker Greenwith | Golden Grove | Mawson Lakes | Modbury (08) 8289 6660

North East, Shop 2, 1007 North East Road, RIDGEHAVEN SA 5097
greenwithgoldengrove.ljhooker.com.au | info@ljhsupport.com.au



Disclaimer: All information contained therein is gathered from relevant third parties sources. We cannot guarantee or give any warranty about the information provided. Interested parties must rely solely on their own enquiries.

**LJ Hooker Greenwith | Golden Grove
| Mawson Lakes | Modbury
(08) 8289 6660**



Scale in metres. This drawing is for illustration purposes only. All measurements are approximate and details intended to be relied upon should be independently verified. Produced by **The Fotobase Group**