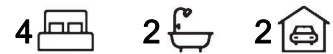


## Mawson Lakes, 5 Pine Court

Prime Position with Lake and Park Views!



Built in 2009, this modern 4-bedroom home is perfectly positioned with views over a lake and adjacent grass reserve in the beautiful 'Shoalhaven Estate'. A picture-perfect location, ideal for those who want to look onto nature, the home offers spacious bedrooms and open plan living downstairs with space for a couple of vehicles to park off street. A home sure to appeal to young couples, families or perhaps investors looking to secure this prime piece of real estate!

**For Sale**  
\$850,000

**View**  
[ljhooker.com.au/2B7JGJU](http://ljhooker.com.au/2B7JGJU)

**Contact**  
**Shaun Roberts**  
0435 367 534  
[shaunr@ljhsales.com.au](mailto:shaunr@ljhsales.com.au)

Features include:

- \* Master Bedroom with walk-in robes, ensuite with his and her vanities and own private balcony with lake views!
- \* Three additional good size bedrooms, bedrooms two and three with built-in robes
- \* Bedroom two also includes its own private balcony
- \* Timber floors and high ceilings create an atmosphere of space and vibrant entertaining
- \* LED downlights throughout



**Disclaimer:** All information contained therein is gathered from relevant third parties sources. We cannot guarantee or give any warranty about the information provided. Interested parties must rely solely on their own enquiries.

**LJ Hooker Greenwith | Golden Grove**  
**| Mawson Lakes | Modbury**  
**(08) 8289 6660**

- \* Open-plan family and meals located downstairs
- \* Modern kitchen with electric cooktop and oven, stainless steel appliances and dishwasher
- \* Downstairs powder room ideal for when guests come over
- \* Ducted reverse cycle heating and cooling
- \* Secure single auto garage with internal access, also with additional undercover carport
- \* Paved outdoor courtyard overlooking park and lake

Perfect for those who may wish to lock up and leave to pursue travel or may have busy careers. Only 5 minutes from nearby Mawson Lakes interchange and Mawson Lakes Central shopping and business hub.

Enquire today to avoid disappointment!

All information provided has been obtained from sources we believe to be accurate, however, we cannot guarantee the information is accurate and we accept no liability for any errors or omissions (including but not limited to a property's land size, floor plans and size, building age and condition). Interested parties should make their own enquiries and obtain their own legal and financial advice. Should this property be scheduled for auction, the Vendor's Statement may be inspected at either of our two LJ Hooker Property Specialists Real Estate offices for 3 consecutive business days immediately preceding the auction and at the auction for 30 minutes before it starts.

RLA 208516

## More About this Property

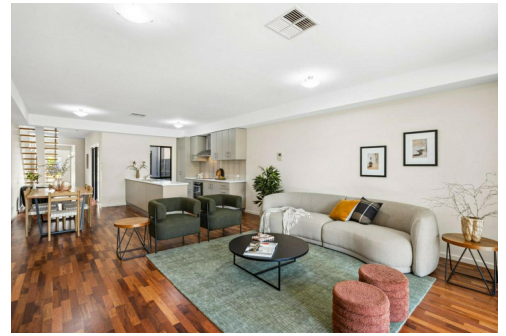
<b>Property ID</b>	2B7JGJU
<b>Property Type</b>	House
<b>House Size</b>	250 m2
<b>Land Area</b>	165 m2
<b>Including</b>	Air Conditioning Ducted Cooling Ducted Heating Toilets (1) Balcony Dishwasher Built-in-Robes Secure Parking Fully Fenced Remote Garage

**Shaun Roberts 0435 367 534**

Managing Partner | Sales Specialist | shaunr@ljhsales.com.au

**LJ Hooker Greenwith | Golden Grove | Mawson Lakes | Modbury (08) 8289 6660**

North East, Shop 2, 1007 North East Road, RIDGEHAVEN SA 5097  
greenwithgoldengrove.ljhooker.com.au | info@ljhsupport.com.au



**Disclaimer:** All information contained therein is gathered from relevant third parties sources. We cannot guarantee or give any warranty about the information provided. Interested parties must rely solely on their own enquiries.

**LJ Hooker Greenwith | Golden Grove  
| Mawson Lakes | Modbury  
(08) 8289 6660**



UPPER LEVEL



Scale in metres. This drawing is for illustration purposes only. All measurements are approximate and details intended to be relied upon should be independently verified.

Produced by The Fotobase Group