

Mawson Lakes, 4 Newland Way

Super Stylish Sandstone Cottage in Quiet Peaceful Location!

3  2  1 

For Sale
UNDER CONTRACT

View
ljhooker.com.au/2BEBGJU

Contact
Shaun Roberts
0435 367 534
shaunr@ljhsales.com.au

Immaculately presented delivering unrivaled low maintenance living both inside and outside, there's so much to love about this gorgeous 3 bedroom stone fronted cottage home. Tastefully updated throughout and sitting on a corner allotment only minutes to nearby walking trails and wetlands. Appealing to first home buyers, empty nesters looking to downsize, and investors alike looking for something that will always be appealing and desirable, look no further!

Features include:

- * 3 Bedrooms, master bedroom with walk through robe to updated ensuite bathroom
- * Bedroom 2 and 3 both with built in robes
- * Floating timber floors throughout
- * Stylish kitchen with marble look benchtops, 2-pak white cabinetry, stainless steel appliances include oven, gas cooktop and dishwasher, tiled splash back with x2 pendant



Disclaimer: All information contained therein is gathered from relevant third parties sources. We cannot guarantee or give any warranty about the information provided. Interested parties must rely solely on their own enquiries.

LJ Hooker Greenwith | Golden Grove
| Mawson Lakes | Modbury
(08) 8289 6660

lights overhead

- * Open plan family and meals area with sky light with auto blind, and ceiling fan
- * 2.7m high ceilings
- * LED downlights
- * Plantation shutters
- * Ducted gas heating with split system A/C wall unit also providing all your heating and cooling needs
- * Large private outdoor entertainment area with sky light and ceiling fan, outdoor BBQ connected to mains gas the ideal space to unwind and entertain with family and friends
- * Meticulous rear yard, established leafy garden bed with water feature, artificial turf and undercover verandah
- * Garden shed
- * Single auto carport with petition screening gate
- * Feel safe and secure with 5 security cameras, security window screens and screen doors
- * 3.2kW solar panel system saving you \$\$ on those unwanted energy bills
- * Landscaped low maintenance front gardens, with formal shaped trees, picket fence and artificial lawns complete this most attractive home

Don't delay as homes of this high standard and caliber are rarely found in this highly popular suburb.

All amenities are only moments away by car, with access to shops, restaurants and eateries, not to mention public transport. Easy access to Salisbury Highway and North/South connector roads ensure commuting across town and down to western beaches is a breeze!

Enquire today.

All information provided has been obtained from sources we believe to be accurate, however, we cannot guarantee the information is accurate and we accept no liability for any errors or omissions (including but not limited to a property's land size, floor plans and size, building age and condition). Interested parties should make their own enquiries and obtain their own legal and financial advice. Should this property be scheduled for auction, the Vendor's Statement may be inspected at either of our two LJ Hooker Property Specialists Real Estate offices for 3 consecutive business days immediately preceding the auction and at the auction for 30 minutes before it starts.

RLA 208516



**LJ Hooker Greenwith | Golden Grove
| Mawson Lakes | Modbury
(08) 8289 6660**

Disclaimer: All information contained therein is gathered from relevant third parties sources. We cannot guarantee or give any warranty about the information provided. Interested parties must rely solely on their own enquiries.

More About this Property

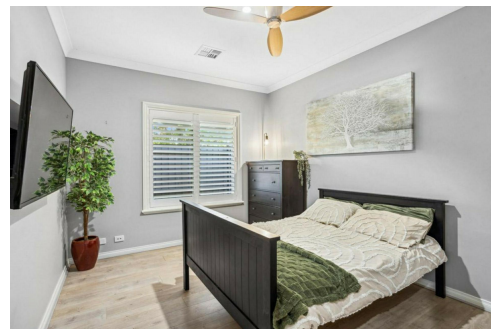
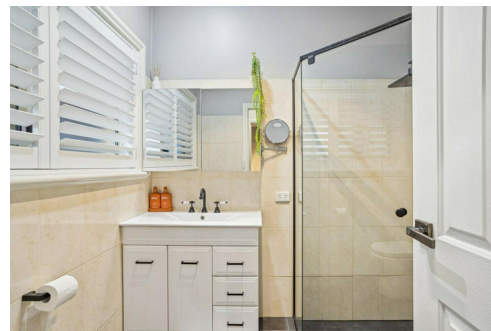
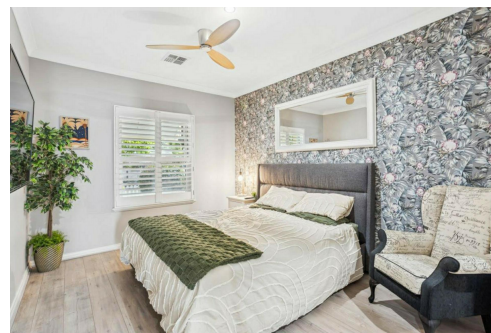
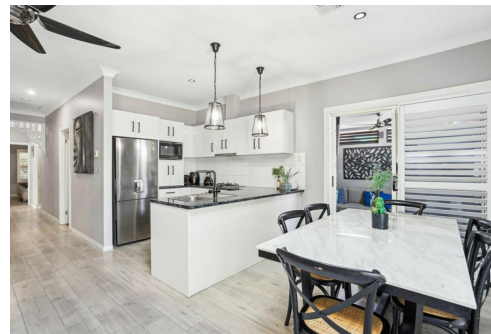
Property ID	2BEBGJU
Property Type	House
House Size	124 m2
Land Area	276 m2
Including	Air Conditioning Dishwasher Outdoor Entertaining Built-in-Robes Secure Parking Fully Fenced

Shaun Roberts 0435 367 534

Managing Partner | Sales Specialist | shaunr@ljhsales.com.au

LJ Hooker Greenwith | Golden Grove | Mawson Lakes | Modbury (08) 8289 6660

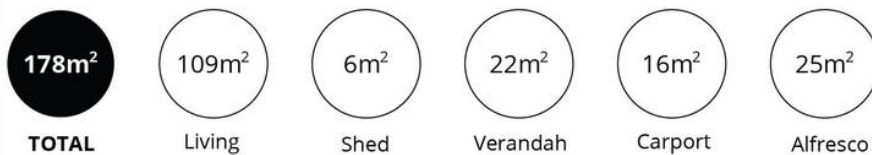
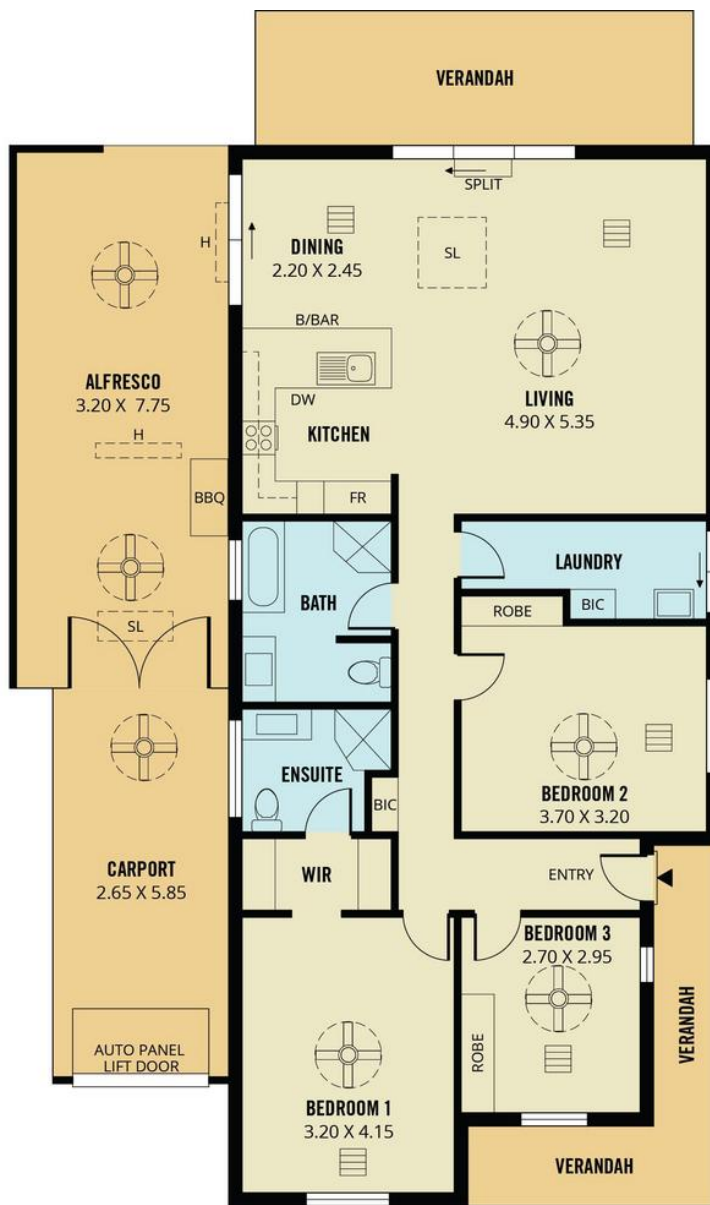
North East, Shop 2, 1007 North East Road, RIDGEHAVEN SA 5097
greenwithgoldengrove.ljhooker.com.au | info@ljhsupport.com.au



Disclaimer: All information contained therein is gathered from relevant third parties sources.

We cannot guarantee or give any warranty about the information provided. Interested parties must rely solely on their own enquiries.

**LJ Hooker Greenwith | Golden Grove
| Mawson Lakes | Modbury
(08) 8289 6660**



Scale in metres. This drawing is for illustration purposes only. All measurements are approximate and details intended to be relied upon should be independently verified. Produced by **The Fotobase Group**