
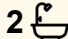





39 Bimini Crescent, Mawson Lakes

4  2  2 

What You've Been Waiting For!

Auction Location: 39 Bimini Crescent, Mawson Lakes SA 5095

FOR SALE

Auction - Saturday, January 31st at 12:00pm

Located in the 'Bridges Estate' of Mawson Lakes, this beautifully designed 4-bedroom home offers space, comfort and functional entertaining areas throughout.

AGENTS

Shaun Roberts
0435 367 534
shaunr@ljhsales.com.au

From the welcoming front formal lounge through to the open-plan kitchen, meals and family area and out to the generous outdoor entertaining space ideal for BBQs with family and friends. There is ample room for everyone to enjoy, a wonderful location to explore with loved ones! Children will love the playground up the street or it may just be a quiet walk with your dog around the picturesque lake in the centre of the estate.

AGENCY

LJ Hooker Property Specialists
(08) 8289 6660

Features Include:

- Four bedrooms, master with walk in wardrobe, ensuite with his and hers sink, along with a screen door accessing the rear garden
- Bedrooms 2 and 3 both with built in wardrobes
- Bathroom with bathtub, separate vanity and toilet
- Kitchen with Caesarstone benchtops, stainless steel appliances, gas cooktop, dishwasher and cupboard pantry
- Open plan kitchen/dining overlooks glass sliding door access to paved side courtyard

All information contained therein is gathered from relevant third parties sources. We cannot guarantee or give any warranty about the information provided. Interested parties must rely solely on their own enquiries.

 **LJ Hooker**

- Spacious family room overlooks the backyard
- Front formal lounge
- Ducted reverse cycle air conditioning and downlights throughout
- Paved outdoor entertaining with generous lawn space
- Automatic double panel lift garage, with internal access to home and rear via manual single roller door

This home enjoys proximity to local cafés, shopping, quality schools and picturesque parks, offering a vibrant yet family-friendly lifestyle. Commuting is made easy with convenient access to Main North Road and the Northern Expressway, providing a smooth connection to the Adelaide CBD and beyond. With everything you need just moments away, this is Mawson Lakes living at its best.

Enquire today!

All information provided has been obtained from sources we believe to be accurate, however, we cannot guarantee the information is accurate and we accept no liability for any errors or omissions (including but not limited to a property's land size, floor plans and size, building age and condition). Interested parties should make their own enquiries and obtain their own legal and financial advice. Should this property be scheduled for auction, the Vendor's Statement may be inspected at our LJ Hooker Property Specialists Real Estate office for 3 consecutive business days immediately preceding the auction and at the auction for 30 minutes before it starts.
RLA 208516

MORE DETAILS

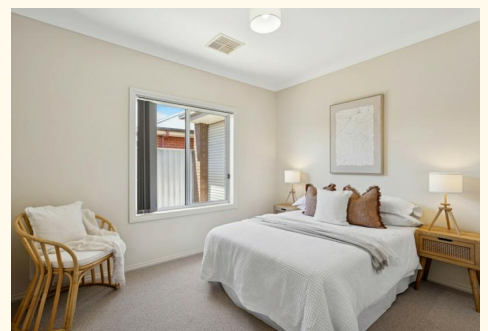
Property ID	2CTEGJU
Property Type	House
House Size	212 m2
Land Area	438 m2
Including	Air Conditioning Ducted Cooling Dishwasher Secure Parking Fully Fenced

Shaun Roberts 0435 367 534

Managing Partner | Sales Specialist | shaunr@ljhsales.com.au

LJ Hooker Property Specialists (08) 8289 6660

Shop 2, 1007 North East Road, RIDGEHAVEN SA 5097
propertyspecialists.ljhooker.com.au | info@ljhsupport.com.au





Scale in metres. This drawing is for illustration purposes only. All measurements are approximate and details intended to be relied upon should be independently verified. Produced by The Fotobase Group

All information contained therein is gathered from relevant third parties sources. We cannot guarantee or give any warranty about the information provided. Interested parties must rely solely on their own enquiries.

