

Mawson Lakes, 35 Riverside Street

Stylish 4 Bedroom Family Home with Park and Waterway Views!

Superbly situated adjacent to an open nature reserve and waterway is this stunning 2012 built 4-bedroom family home. Offering two comfortable living spaces for your family's enjoyment and boasting quality appointments throughout. This home has been cleverly designed to maximize every square inch while also maximizing its location and views! A wonderful location to live and take advantage of your surroundings, whether it be taking the dog for a walk along the many walking trails or grabbing a coffee and something to eat from one of the many eateries in the area.

Features Include:

- * 4 Bedrooms all with built in robes, master bedroom with ensuite, double shower featuring floor to ceiling tiles and views overlooking the waterway
- * Open plan family and meals area



Disclaimer: All information contained therein is gathered from relevant third parties sources. We cannot guarantee or give any warranty about the information provided. Interested parties must rely solely on their own enquiries.

SOLD

4 2 2

For Sale
\$779,000 - \$829,000

View
ljhooker.com.au/2AJ2GJU

Contact
Shaun Roberts
0435 367 534
shaunr@ljhsales.com.au

**LJ Hooker Greenwith | Golden Grove
| Mawson Lakes | Modbury
(08) 8289 6660**

- * Modern kitchen with island bench, stainless steel appliances and walk in pantry
- * Ducted reverse cycle air conditioning
- * 2.7m Ceilings both downstairs and upstairs
- * 2 Living rooms, upstairs living area/retreat with study nook plus views over the waterway
- * Main bathroom also featuring floor to ceiling tiles, bath and shower
- * Double automatic car garage with Inside entry to the property
- * Low maintenance front and rear yards

Close to all the local amenities Mawson lakes has to offer such as walking trails, restaurants and public transport. Only a short drive from Northeast Road, Salisbury Highway and the North South Motorway to make your commuting around Adelaide a Breeze!

Enquire Today!

All information provided has been obtained from sources we believe to be accurate, however, we cannot guarantee the information is accurate and we accept no liability for any errors or omissions (including but not limited to a property's land size, floor plans and size, building age and condition). Interested parties should make their own enquiries and obtain their own legal and financial advice. Should this property be scheduled for auction, the Vendor's Statement may be inspected at either of our two LJ Hooker Property Specialists Real Estate offices for 3 consecutive business days immediately preceding the auction and at the auction for 30 minutes before it starts.

RLA 208516

More About this Property

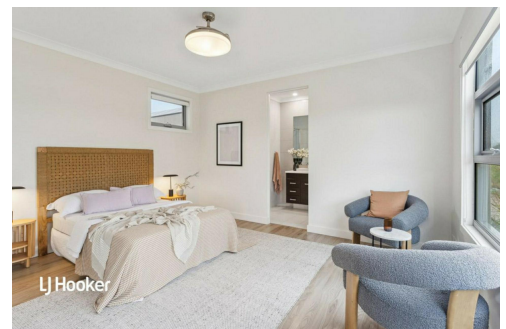
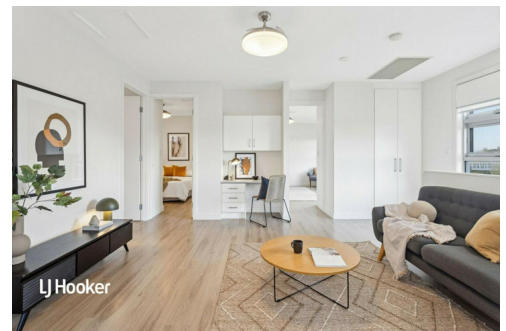
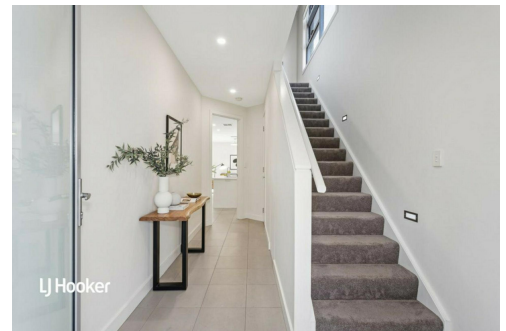
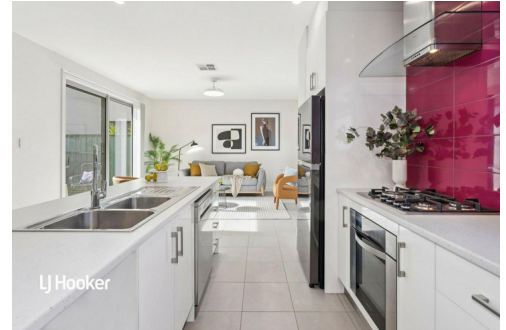
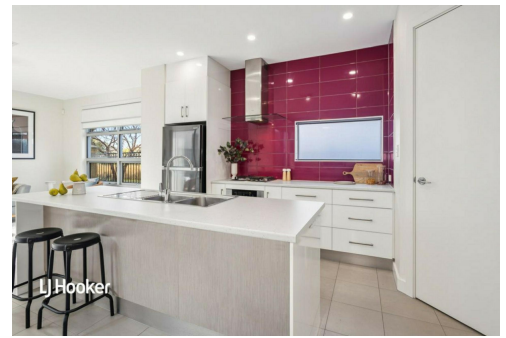
Property ID	2AJ2GJU
Property Type	House
House Size	201 m ²
Land Area	191 m ²

Shaun Roberts 0435 367 534

Managing Partner | Sales Specialist | shaunr@ljhsales.com.au

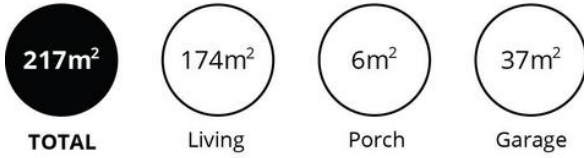
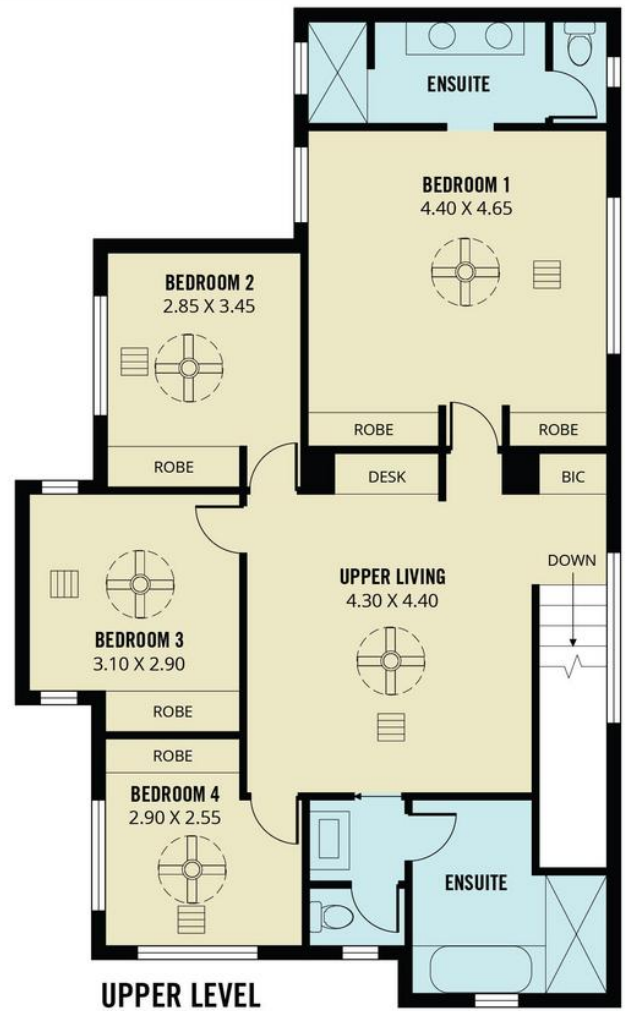
LJ Hooker Greenwith | Golden Grove | Mawson Lakes | Modbury (08) 8289 6660

North East, Shop 2, 1007 North East Road, RIDGEHAVEN SA 5097
greenwithgoldengrove.ljhooker.com.au | info@ljhsupport.com.au



Disclaimer: All information contained therein is gathered from relevant third parties sources. We cannot guarantee or give any warranty about the information provided. Interested parties must rely solely on their own enquiries.

**LJ Hooker Greenwith | Golden Grove
 | Mawson Lakes | Modbury
 (08) 8289 6660**



Scale in metres. This drawing is for illustration purposes only. All measurements are approximate and details intended to be relied upon should be independently verified.

Produced by **The Fotobase Group**



**LJ Hooker Greenwith | Golden Grove
| Mawson Lakes | Modbury
(08) 8289 6660**

Disclaimer: All information contained therein is gathered from relevant third parties sources. We cannot guarantee or give any warranty about the information provided. Interested parties must rely solely on their own enquiries.