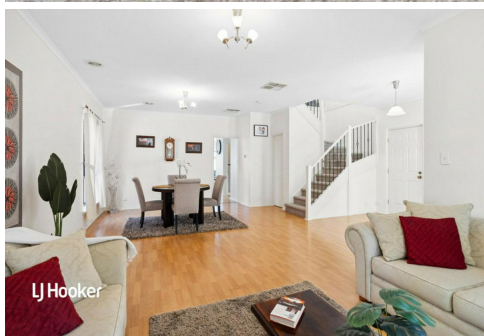
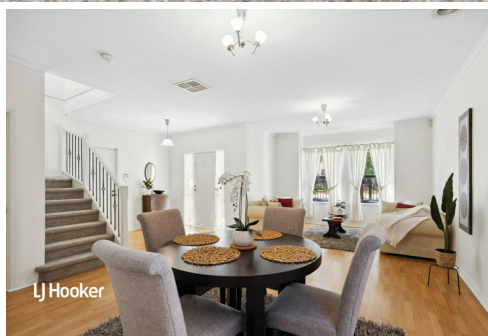




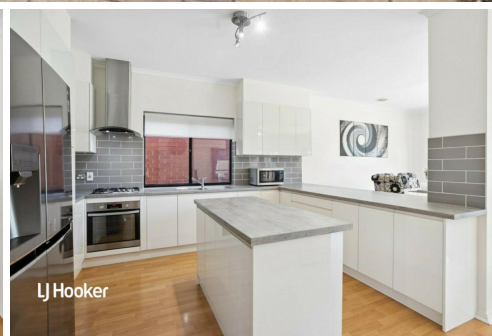
LJ Hooker



LJ Hooker



LJ Hooker



LJ Hooker

Mawson Lakes, 297 Mawson Lakes Boulevard

SAVE THE DATE : FIRST OPEN INSPECTION SAT 6TH APRIL 1-1:40PM

A Large Family Entertainer!

Built in 2005 is this large 4 bedroom family home offering an abundance of space for the growing family. With 3 spacious living areas under roof, and featuring updated bathrooms throughout along with a modern U shape kitchen with island bench for the cook of the home. You'll love the outdoor area with large pergola entertaining which can be enclosed with the auto café blind making a perfect space for birthday parties or celebrations. There's a lawn backyard for children to play or perfect for the family pet too!

Features include:

* 4 bedrooms, master with updated ensuite, floor to ceiling tiles and heated towel rack, walk in robe and balcony



Disclaimer: All information contained therein is gathered from relevant third parties sources. We cannot guarantee or give any warranty about the information provided. Interested parties must rely solely on their own enquiries.



For Sale
UNDER CONTRACT

View
ljhooker.com.au/2A2EGJU

Contact
Shaun Roberts
0435 367 534
shaunr@ljhsales.com.au

LJ Hooker Greenwith | Golden Grove
| Mawson Lakes | Modbury
(08) 8289 6660

- * Bedroom 2 and 3 with built in robes
- * Front formal lounge and dining room
- * Modern kitchen with island bench, subway tile splash back, cupboard pantry, gas cooktop, oven and rangehood.
- * Open plan family and meals area overlook's the rear yard and side entertaining area
- * Main bathroom upstairs with freestanding bath, heated towel rack and floor to ceiling tiles
- * Upstairs living perfect for teenagers or parent's retreat
- * Ducted reverse cycle air conditioning
- * Home alarm system
- * Solar panels saving you \$\$ on your electricity bills
- * Double auto garage with internal access, roller door access to backyard
- * Large pergola entertaining with auto café blind
- * Lawn back yard and clothes line, tool shed

A wonderful location, situated in the main section of Mawson Lakes within walking distance to lakes, parks and playgrounds. With a bus stop across the road, you have excellent access to catch the public transport for those commuting to the Adelaide CBD and also easy access by car onto Main North Rd. Close to schools and UNI SA Mawson Lakes campus, this is a desirable location to raise a family.

Enquire today.

All information provided has been obtained from sources we believe to be accurate, however, we cannot guarantee the information is accurate and we accept no liability for any errors or omissions (including but not limited to a property's land size, floor plans and size, building age and condition). Interested parties should make their own enquiries and obtain their own legal and financial advice. Should this property be scheduled for auction, the Vendor's Statement may be inspected at either of our two LJ Hooker Property Specialists Real Estate offices for 3 consecutive business days immediately preceding the auction and at the auction for 30 minutes before it starts.

RLA 208516



**LJ Hooker Greenwith | Golden Grove
| Mawson Lakes | Modbury
(08) 8289 6660**

Disclaimer: All information contained therein is gathered from relevant third parties sources. We cannot guarantee or give any warranty about the information provided. Interested parties must rely solely on their own enquiries.

More About this Property

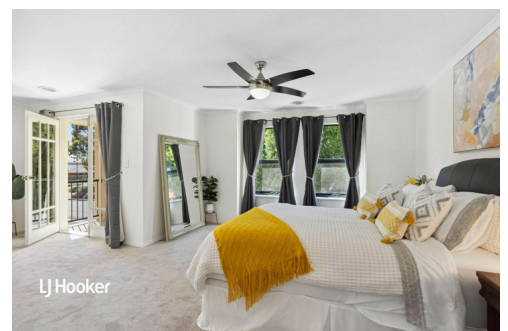
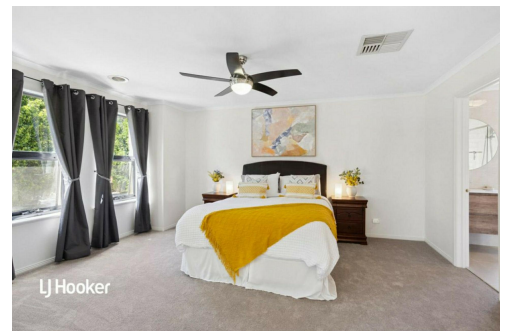
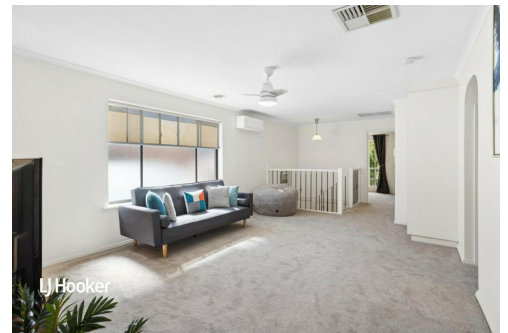
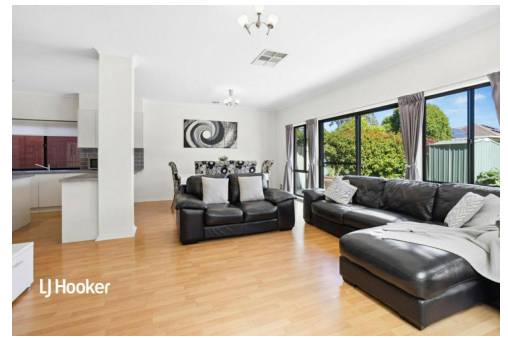
Property ID	2A2EGJU
Property Type	House
House Size	255 m ²
Land Area	406 m ²
Including	Air Conditioning Ducted Cooling Ducted Heating Evaporative Cooling Alarm Built-in-Robes Fully Fenced

Shaun Roberts 0435 367 534

Managing Partner | Sales Specialist | shaunr@ljhsales.com.au

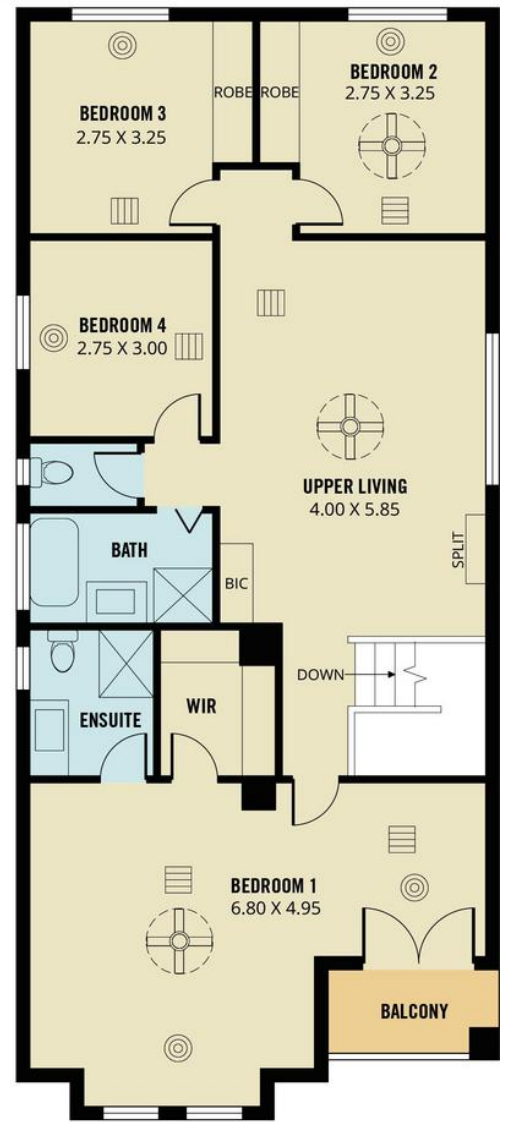
LJ Hooker Greenwith | Golden Grove | Mawson Lakes | Modbury (08) 8289 6660

North East, Shop 2, 1007 North East Road, RIDGEHAVEN SA 5097
greenwithgoldengrove.ljhooker.com.au | info@ljhsupport.com.au



Disclaimer: All information contained therein is gathered from relevant third parties sources.
We cannot guarantee or give any warranty about the information provided. Interested parties must rely solely on their own enquiries.

**LJ Hooker Greenwith | Golden Grove
| Mawson Lakes | Modbury
(08) 8289 6660**



UPPER LEVEL



Scale in metres. This drawing is for illustration purposes only. All measurements are approximate and details intended to be relied upon should be independently verified.

Produced by **The Fotobase Group**