

Mawson Lakes, 25 Nelson Crescent

Impressive Single Story Family Home in Bridges Estate!

Located in the 'Bridges Estate' in Mawson Lakes is this high-quality single story, four-bedroom family home built in 2011. You'll love the spacious feel the moment you step foot inside the home, from the wide entrance and hallway, to the tall 3m high vaulted ceilings featured in both the front formal lounge and main living room. With stylish island kitchen, Smeg stainless steel appliances, and stone benchtops, the kitchen overlooks the generous main living/meals space and flows seamlessly outdoors to the deck alfresco entertaining. There's lawn for the family pet or for children to play, and the location offers walks around nearby lakes and parklands!

Features include:

- * 4 Bedrooms, all with built in robes
- * Master bedroom with walk in robe and built in, with luxurious ensuite featuring central spa and his and hers showers, and floor to ceiling tiles
- * Bedroom 2 also with own ensuite bathroom and built in robe



Disclaimer: All information contained therein is gathered from relevant third parties sources. We cannot guarantee or give any warranty about the information provided. Interested parties must rely solely on their own enquiries.

4 3 2

For Sale

Auction Saturday 1st February at 1pm on-site

View

ljhooker.com.au/2B8UGJU

Contact

Shaun Roberts

0435 367 534
shaunr@ljhsales.com.au

Carla Doecke

0456 830 122
carlad@ljhsales.com.au

LJ Hooker Greenwith | Golden Grove
| Mawson Lakes | Modbury
(08) 8289 6660

- * Bedroom 3 and 4 located to the rear of the home, with central main bathroom/shower and separate toilet
- * Open plan family and meals area with tall vaulted ceilings
- * Island kitchen with Caesarstone benchtops, Smeg 900mm oven and gas cooktop, dishwasher and pantry
- * Formal lounge with tall vaulted ceilings
- * Ducted reverse cycle air conditioning
- * Deck alfresco entertaining area ideal for outdoor dining with friends and family
- * Lawn backyard with low maintenance gardens and paved area with clothes line
- * Double auto garage with internal access to the home

Walking distance to Mawson Lakes Central, cafes, shops and lakes. This is a home that delivers exceptional quality and finish to meet your needs for many years to come. Get set to enjoy living in this beautiful location set amongst other quality homes! Location, luxury and lifestyle are all on offer here.

Enquire today!

All information provided has been obtained from sources we believe to be accurate, however, we cannot guarantee the information is accurate and we accept no liability for any errors or omissions (including but not limited to a property's land size, floor plans and size, building age and condition). Interested parties should make their own enquiries and obtain their own legal and financial advice. Should this property be scheduled for auction, the Vendor's Statement may be inspected at either of our two LJ Hooker Property Specialists Real Estate offices for 3 consecutive business days immediately preceding the auction and at the auction for 30 minutes before it starts.

RLA 208516

More About this Property

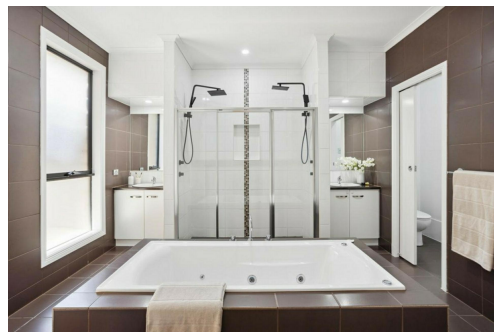
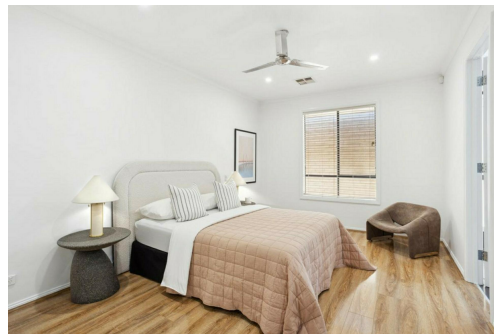
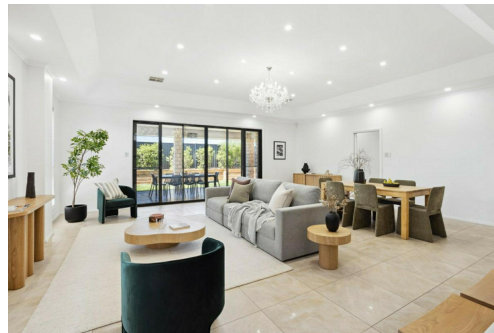
Property ID	2B8UGJU
Property Type	House
House Size	260 m²
Land Area	490 m²
Including	Air Conditioning Ducted Cooling Ducted Heating Fully Fenced Remote Garage Solar Hot Water

Shaun Roberts 0435 367 534
Managing Partner | Sales Specialist | shaunr@ljhsales.com.au
Carla Doecke 0456 830 122
Sales Specialist | carlad@ljhsales.com.au

LJ Hooker Greenwith | Golden Grove | Mawson Lakes | Modbury (08) 8289 6660
North East, Shop 2, 1007 North East Road, RIDGEHAVEN SA 5097
greenwithgoldengrove.ljhooker.com.au | info@ljhsupport.com.au



Disclaimer: All information contained therein is gathered from relevant third parties sources. We cannot guarantee or give any warranty about the information provided. Interested parties must rely solely on their own enquiries.



**LJ Hooker Greenwith | Golden Grove
| Mawson Lakes | Modbury
(08) 8289 6660**



**LJ Hooker Greenwith | Golden Grove
| Mawson Lakes | Modbury
(08) 8289 6660**