

Mawson Lakes, 17 Newland Way

You're Going to Love It!

This gorgeous stone fronted 'cottage style' 3 bedroom, 2006 built home is situated in the picturesque 'Sanctuary Estate' of Mawson Lakes. Offering two bathrooms, an open plan family and meals area and delightful outdoor space with lawn and room to entertain under the pitch roof pergola. A dream home for those starting out or perfect for couples looking to downsize!

Features include:

- * 290m² (approx.) land size
- * 3 bedrooms, master with walk in robe and ensuite bathroom
- * Ceiling fans in all bedrooms, built in in bedroom 3
- * Open plan family and meals area
- * Modern look kitchen with breakfast bar, gas cooktop, oven and dishwasher
- * Ducted reverse cycle air conditioning
- * Main bathroom with bath/shower and separate toilet for guests



For Sale
\$699,000 - \$729,000

View
ljhooker.com.au/2BB0GJU

Contact
Shaun Roberts
0435 367 534
shaunr@ljhsales.com.au



Disclaimer: All information contained therein is gathered from relevant third parties sources. We cannot guarantee or give any warranty about the information provided. Interested parties must rely solely on their own enquiries.

LJ Hooker Greenwith | Golden Grove
| Mawson Lakes | Modbury
(08) 8289 6660

* Pitch roof pergola entertaining looking over lawn backyard and framing garden bed

* Single auto carport with paved side yard

Just moments to nearby parks and walking trails this is a wonderful location to live. Only a short drive to Mawson Lakes Central, along with easy access to North/South Expressway, Salisbury Highway and Main North Road for those commuting across Adelaide. Sure to appeal to many, you're going to love it.

Enquire today!

All information provided has been obtained from sources we believe to be accurate, however, we cannot guarantee the information is accurate and we accept no liability for any errors or omissions (including but not limited to a property's land size, floor plans and size, building age and condition). Interested parties should make their own enquiries and obtain their own legal and financial advice. Should this property be scheduled for auction, the Vendor's Statement may be inspected at either of our two LJ Hooker Property Specialists Real Estate offices for 3 consecutive business days immediately preceding the auction and at the auction for 30 minutes before it starts.

RLA 208516

More About this Property

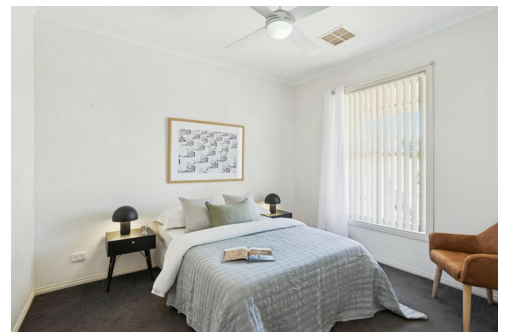
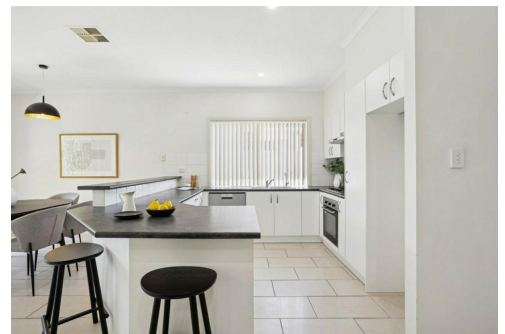
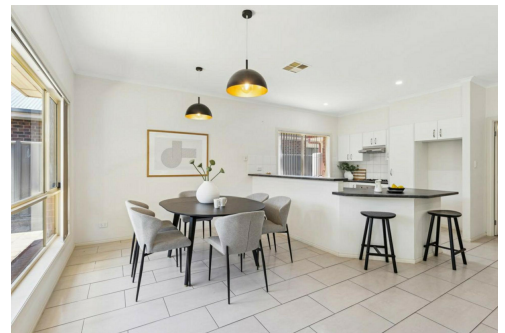
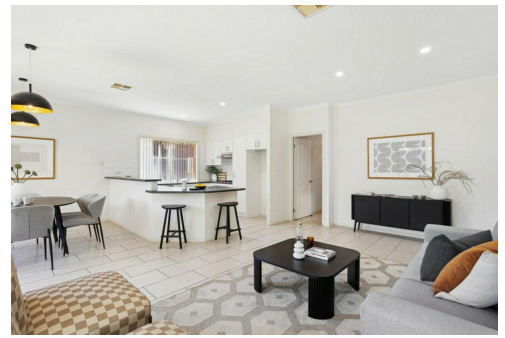
Property ID	2BB0GJU
Property Type	House
House Size	127 m2
Land Area	290 m2
Including	Air Conditioning Ducted Cooling Ducted Heating Courtyard Dishwasher Outdoor Entertaining Built-in-Robes Secure Parking Fully Fenced Remote Garage

Shaun Roberts 0435 367 534

Managing Partner | Sales Specialist | shaunr@ljhsales.com.au

LJ Hooker Greenwith | Golden Grove | Mawson Lakes | Modbury (08) 8289 6660

North East, Shop 2, 1007 North East Road, RIDGEHAVEN SA 5097
greenwithgoldengrove.ljhooker.com.au | info@ljhsupport.com.au



Disclaimer: All information contained therein is gathered from relevant third parties sources. We cannot guarantee or give any warranty about the information provided. Interested parties must rely solely on their own enquiries.

**LJ Hooker Greenwith | Golden Grove
| Mawson Lakes | Modbury
(08) 8289 6660**



NEWLAND WAY

**SITE PLAN
(NOT TO SCALE)**

Scale in metres. This drawing is for illustration purposes only. All measurements are approximate and details intended to be relied upon should be independently verified. Produced by The Fotobase Group