



## Mawson Lakes, 1 Weatherstone Crescent

### A Wonderful Family Home with Spectacular Pond Views!

Situated on a generous corner allotment of 535m<sup>2</sup> (approx.) is this gorgeous 5 bedroom character fronted home built by well know Adelaide home builder Rosssdale Homes in 2006. The home is ideal for large families and comprises of 3 generous open plan living spaces along with 5 bedrooms, or flexibility to use the 5th bedroom at the front of the home as a study or home office. You'll love the large open outdoor entertaining area which is perfect for large family gatherings or parties. With convenience of side gated access there is space to store a third vehicle, or trailer/caravan.

Features include:

- \* 5 bedroom home, bedroom 2,3 and 4 all with built in robes and ceiling fans
- \* Master bedroom with ensuite and walk in robe, including ceiling fan
- \* Open plan front formal lounge and dining room
- \* Large kitchen with corner pantry, 900mm Euro gas cooktop, Euro oven, and dishwasher
- \* Open plan family and meals with seamless access outdoors



**Disclaimer:** All information contained therein is gathered from relevant third parties sources. We cannot guarantee or give any warranty about the information provided. Interested parties must rely solely on their own enquiries.

5 2 2

**For Sale**  
UNDER CONTRACT

**View**  
By Appointment

**Contact**  
**Shaun Roberts**  
0435 367 534  
shaunr@ljhsales.com.au

**LJ Hooker Greenwith | Golden Grove**  
**| Mawson Lakes | Modbury**  
**(08) 8289 6660**



- \* Spacious rumpus room/ teenagers retreat off the bedrooms
- \* Ducted evaporative cooling with gas wall heater for all year-round comfort
- \* Main bathroom with bath/shower and separate toilet
- \* High 2.7m ceilings
- \* Large outdoor entertaining area with café blinds
- \* L shape lawn backyard with established gardens
- \* Side gated access perfect for those with a campervan, work vehicle needing to be stored on the property
- \* Double auto garage with panel door, internal access to the home

Overlooking a picturesque park setting with pond and an abundance of aquatic bird life, one this is for sure you will never tire of taking in the beautiful views over the road. The vendors tell is the ducks are regular visitors to their doorstep.

Just a short drive to Mawson Lakes Central, shops, interchange and schools this is the ideal location for those looking to give their family the very best!

Enquire today.

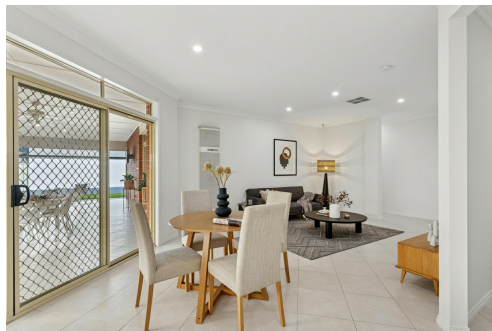
All information provided has been obtained from sources we believe to be accurate, however, we cannot guarantee the information is accurate and we accept no liability for any errors or omissions (including but not limited to a property's land size, floor plans and size, building age and condition). Interested parties should make their own enquiries and obtain their own legal and financial advice. Should this property be scheduled for auction, the Vendor's Statement may be inspected at either of our two LJ Hooker Property Specialists Real Estate offices for 3 consecutive business days immediately preceding the auction and at the auction for 30 minutes before it starts. RLA 208516

## More About this Property

Property ID	2BSPGJU
Property Type	House
House Size	270 m2
Land Area	535 m2
Including	Air Conditioning Evaporative Cooling Alarm Built-in-Robes Secure Parking Fully Fenced Solar Panels

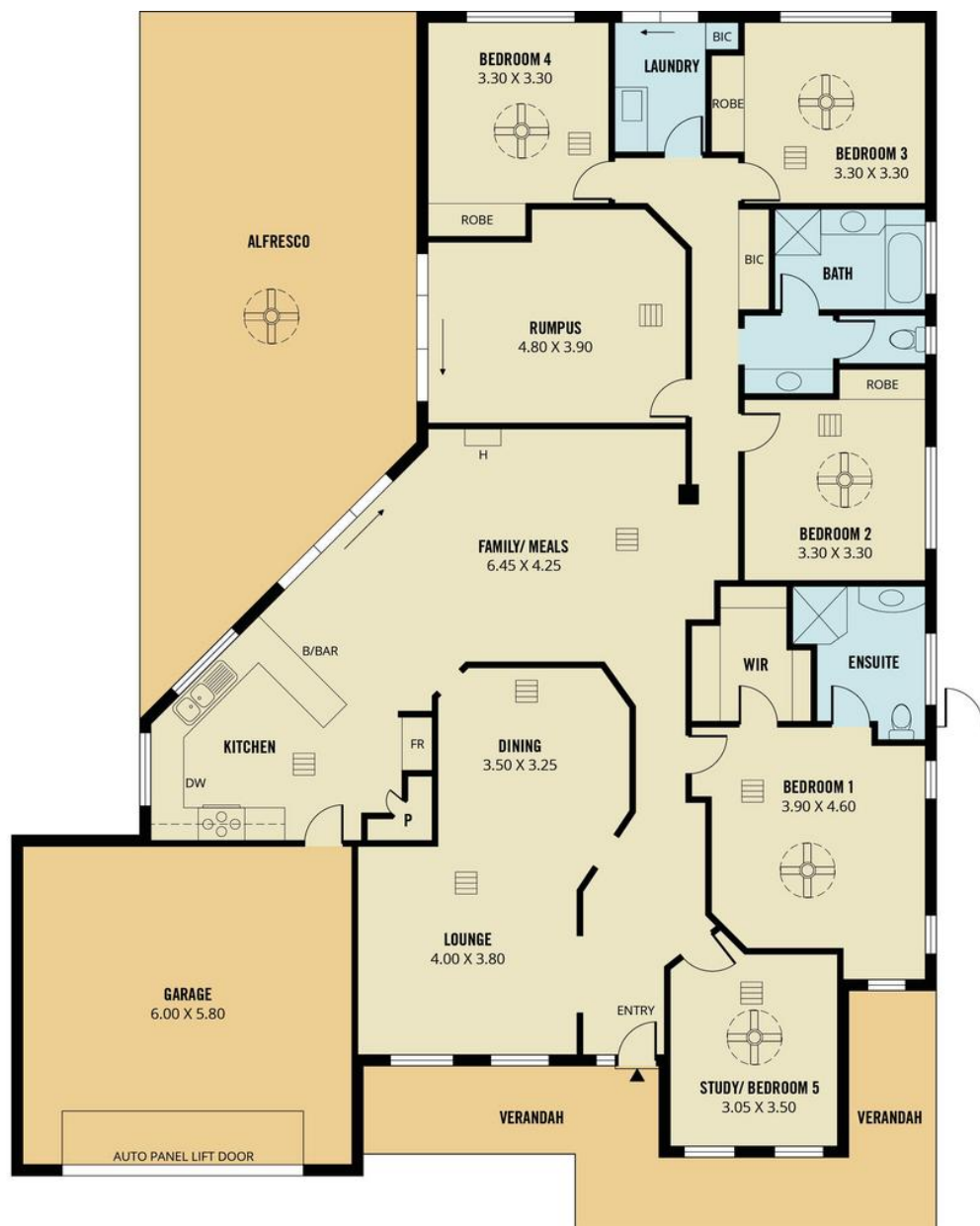
**Shaun Roberts 0435 367 534**  
Managing Partner | Sales Specialist | shaunr@ljhsales.com.au

**LJ Hooker Greenwith | Golden Grove | Mawson Lakes | Modbury (08) 8289 6660**  
North East, Shop 2, 1007 North East Road, RIDGEHAVEN SA 5097  
greenwithgoldengrove.ljhooker.com.au | info@ljhsupport.com.au



**Disclaimer:** All information contained therein is gathered from relevant third parties sources. We cannot guarantee or give any warranty about the information provided. Interested parties must rely solely on their own enquiries.

**LJ Hooker Greenwith | Golden Grove  
| Mawson Lakes | Modbury  
(08) 8289 6660**



Scale in metres. This drawing is for illustration purposes only. All measurements are approximate and details intended to be relied upon should be independently verified.

Produced by The Fotobase Group



**Disclaimer:** All information contained therein is gathered from relevant third parties sources. We cannot guarantee or give any warranty about the information provided. Interested parties must rely solely on their own enquiries.

**LJ Hooker Greenwith | Golden Grove  
| Mawson Lakes | Modbury  
(08) 8289 6660**