



50 Hoop Pine Circuit, Maudsland

4 2 2

Family Fun Starts At The Pool !

Nestled in the serene neighbourhood of Maudsland, QLD, 50 Hoop Pine Circuit is a contemporary residence that seamlessly blends comfort with modern elegance. Constructed in April 2019, this exquisite four-bedroom house presents a perfect canvas for downsizers, families, investors, and retirees seeking a blend of luxury and practicality.

Occupying a generous 510 sqm block, the home boasts a sophisticated 6.6kw solar system, ensuring energy efficiency and sustainability. The centrepiece of the property is a stunning 34,000-litre Barrier Reef Brampton saltwater pool, complete with a 1.88m deep end and a 1.27m shallow end that includes four jet spas-a tranquil oasis for relaxation or entertainment.

New laminate flooring throughout the home adds a touch of class, while the master suite commands attention with its air conditioning, walk-in robe, and an ensuite graced with a stone benchtop. The extra-large media room offers a central retreat for family movie nights, and three additional well-sized bedrooms cater to comfort, complete with fans and wardrobes.

The family bathroom doesn't disappoint, with a luxurious bathtub, extra-large shower, and stone benchtop. The heart of the home is the

FOR SALE

Price By Negotiation

AGENTS

Dawie Olivier
0447 822 879
dolivier@ljhg.com.au

AGENCY

LJ Hooker Coomera
(07) 5585 7888

All information contained therein is gathered from relevant third parties sources.
We cannot guarantee or give any warranty about the information provided.
Interested parties must rely solely on their own enquiries.

LJ Hooker

open-plan kitchen, dining, and living space, featuring air conditioning and delightful views of the alfresco dining area and pool. A chef's delight, the kitchen is equipped with a large stone benchtop, an electric cooktop, and ample space for a double-door fridge with a water connection.

LED downlights add a contemporary feel, while the calm and neutral colour scheme creates a welcoming atmosphere. With ample space remaining for children and pets to frolic in the backyard, this is more than just a home-it's your idyllic happily ever after.

Property features include:

- Master bedroom with walk in robe, ensuite and aircon
- 2 additional bedrooms with ceiling fans and wardrobes
- 4th bedroom at rear of property with pool views
- Large kitchen with stunning stone benchtops, featuring an abundance of bench space perfect for informal meals
- Separate large media room
- Fully fenced swimming pool
- New laminate flooring
- Crimsafe security doors
- Low maintenance gardens
- Double lock up garage with remote access
- Laundry in garage
- Salt water pool
- 6.6kw solar system
- 8 min drive to Movie World, Wet n Wild and Paradise Country

Why Families Love Living in Maudsland

- Community-oriented suburb surrounded by lush greenery and scenic hinterland views.
- Only minutes to top local schools and childcare centres, making school runs quick and easy for busy parents.
- Easy connection to the M1, giving families a smooth commute to Brisbane, Southport, and major Gold Coast destinations.
- Just a short drive to Westfield Helensvale, Oxenford Village, and Coomera Town Centre for all your daily needs.
- Nature & Walking Trails perfect for family picnics, bike rides, and outdoor adventures.
- Gateway to the Hinterland - Enjoy weekend escapes to Tamborine Mountain and the beautiful Gold Coast hinterland right on your doorstep.
- Maudsland is known for spacious blocks and leafy streets that provide plenty of space for kids, pets, and relaxed family living.

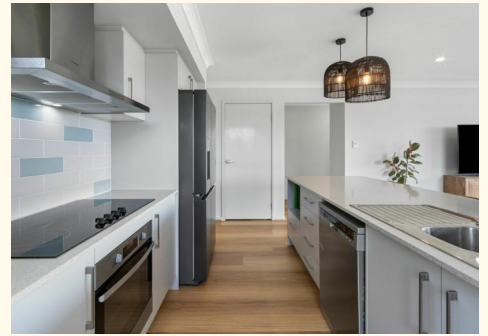
Disclaimer: Whilst every effort has been made to ensure the accuracy of these particulars, no warranty is given by the owner or the agent as to their accuracy. Interested parties should not rely on these particulars as representations of fact but must instead satisfy themselves by inspection or otherwise.

MORE DETAILS

Property ID 43HCGTJ
Property Type House
House Size 207 m2
Land Area 510 m2
Including Ensuite

Dawie Olivier 0447 822 879
Sales Specialist | dolivier@ljhgc.com.au

LJ Hooker Coomera (07) 5585 7888
The Hub, 5/90 Days Road, UPPER COOMERA QLD 4209
coomera.ljhooker.com.au | coomera@ljhgc.com.au



All information contained therein is gathered from relevant third parties sources.
We cannot guarantee or give any warranty about the information provided.
Interested parties must rely solely on their own enquiries.



- 1 Porch
- 2 Garage
- 3 Alfresco
- 4 Pool

50 Hoop Pine Circuit **MAUDSLAND**

4 | 2 | 2 | 207m² | 510m²



DISCLAIMER
 This is not a legal document; all measurements and dimensions are approximate and are subject to errors, omission or misstatement. No liability will be accepted. Plans are shown for marketing purposes only.