



Matamata, 15 Weka Street

Your Perfect Slice Of Matamata

Nestled on a tranquil 769sqm (more or less) section and backing onto the picturesque Tom Grant Drive greenbelt, this charming 1980's gem is poised to welcome its next chapter. Built in 1981 this well-loved home exudes comfort and functionality, balancing classic charm with thoughtful upgrades. The updated kitchen and bathrooms bring a touch of personality to this established residence, making it both move-in ready and packed with potential for personalisation.

Inside, the 170sqm (more or less) floor plan is designed for modern family living. Three bedrooms accessing the central courtyard offer peaceful retreats, while a dedicated study provides the ideal setup for remote work or creative endeavours. The double car garage, paired with off-street driveway parking, ensures convenience for family and guests alike.

Outdoors, the fully fenced yard invites you to relax in privacy or entertain with ease, all while enjoying the lush greenery of the adjoining Tom Grant Drive. Imagine morning strolls



Disclaimer: All information contained therein is gathered from relevant third parties sources.

We cannot guarantee or give any warranty about the information provided. Interested parties must rely solely on their own enquiries.

4

2

2

For Sale
Negotiation

View
ljhooker.co.nz/KCWHR1

Contact
Vicki Tyler
021 509 876
Vicki.Tyler@ljhooker.co.nz
Zailie Edwards
027 864 8604
zailie.edwards@ljhooker.co.nz

LJ Hooker Matamata
07 888 5677
Link Realty Ltd

along the scenic walk or unwinding in your own private oasis at the end of the day.

With the vendors motivated and ready to sell, this Deadline Sale presents a rare opportunity to secure a desirable slice of Matamata living. Offers over \$725,000 are invited, with the Deadline Sale closing on Thursday 28th November 2024 (unless sold prior). This property is not just a house; it's an invitation to make your own lasting memories in one of Matamata's most desirable locales.

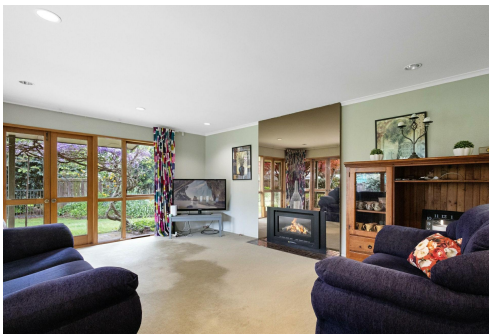
Embrace the opportunity-this one won't wait.

More About this Property

Property ID	KCWHR1
Property Type	House
House Size	170 m2
Land Area	769 m2
Licensed Real Estate Agents (REAA2008)	

Vicki Tyler 021 509 876
Sales Consultant | Vicki.Tyler@ljhooker.co.nz
Zailie Edwards 027 864 8604
Sales Consultant | zailie.edwards@ljhooker.co.nz

LJ Hooker Matamata 07 888 5677
Link Realty Ltd
62 Arawa Street, MATAMATA NZ 3400
matamata.ljhooker.co.nz | matamata@ljhooker.co.nz



Disclaimer: All information contained therein is gathered from relevant third parties sources. We cannot guarantee or give any warranty about the information provided. Interested parties must rely solely on their own enquiries.

LJ Hooker Matamata
07 888 5677
Link Realty Ltd