



Matakana, 6 Laly Haddon Place

A Gem to Start Your Life in Matakana

Escape to the picturesque village of Matakana when you step into this modern thoughtfully designed 107 m2 gem with three bedrooms and one bathroom on 600 m2. Only 6 years old and offering both comfort and functionality while you embrace the warmth of open-plan living with a front deck to soak up the sun. The modern kitchen has an inviting island, creating the perfect space for engaging with others while preparing your meals.

Enjoy elevated views of the Matakana Valley from the luxuriant back garden, creating a serene atmosphere for relaxation, complete with vegetable patches, a convenient shed, and a carport for your convenience. Indulge in the village lifestyle - shop, dine, catch a movie, or hit the gym, within walking distance and the local Matakana Primary School is just a stroll away, making it an ideal location for families.

Only 10 minutes away from pristine beaches, the picturesque Whangateau

3

1

4

For Sale

\$1,159,000

View

[ljhooker.co.nz/F09HAY](https://l.jhooker.co.nz/F09HAY)

Contact

Marie-Dominique Lennan

021 490 039

marie.lennan@ljhooker.co.nz



Disclaimer: All information contained therein is gathered from relevant third parties sources.

We cannot guarantee or give any warranty about the information provided. Interested parties must rely solely on their own enquiries.

LJ Hooker Warkworth

(09) 425 8589

Broadbents 2001 Ltd

Harbour, and Kawau Bay, this home offers the perfect blend of countryside tranquillity and coastal adventure. Dive into the crystal-clear waters or simply soak up the sun on your choice of beaches.

Thanks to the new Northern motorway, Auckland is now closer than ever for those who wish to commute and experience the best of both worlds - a peaceful life in a country village and easy access to the city.

Don't miss the opportunity to make this charming Matakana property your own. Whether you're looking for a home to live in, a holiday home, or a smart investment, this residence is priced to sell and promises a lifestyle that balances convenience and serenity.

Contact us now to schedule a viewing and take the first step towards making this Matakana haven your home sweet home!

More About this Property

Property ID	F09HAY
Property Type	House
House Size	107 m²
Land Area	600 m²
Licensed Real Estate Agents (REAA2008)	

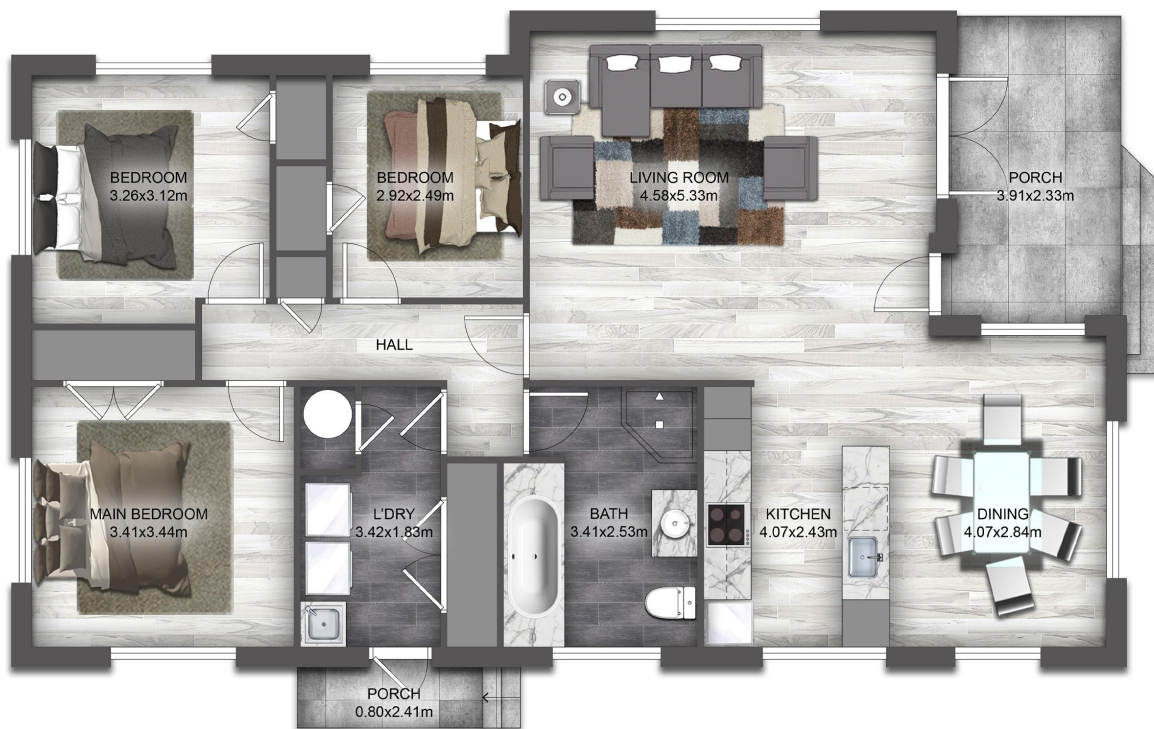
Marie-Dominique Lennan
Salesperson | marie.lennan@ljhooker.co.nz

LJ Hooker Warkworth (09) 425 8589
Broadbents 2001 Ltd
20 Queen Street, Warkworth,
warkworth.ljhooker.co.nz | warkworth@ljhooker.co.nz



Disclaimer: All information contained therein is gathered from relevant third parties sources. We cannot guarantee or give any warranty about the information provided. Interested parties must rely solely on their own enquiries.

LJ Hooker Warkworth
(09) 425 8589
Broadbents 2001 Ltd



DISCLAIMER: PLEASE NOTE THIS FLOOR PLAN IS FOR MARKETING PURPOSES AND IS TO BE USED AS A GUIDE ONLY. ALL EFFORTS HAVE BEEN MADE TO ENSURE ITS ACCURACY, HOWEVER SOME SURFACES, FLOORING, FIXTURES, FURNITURE & ITEMS MAY NOT REPRESENT THE ACTUAL PROPERTY.

6 Laly Haddon Place, Matakana



Disclaimer: All information contained therein is gathered from relevant third parties sources. We cannot guarantee or give any warranty about the information provided. Interested parties must rely solely on their own enquiries.

LJ Hooker Warkworth
(09) 425 8589
 Broadbents 2001 Ltd