



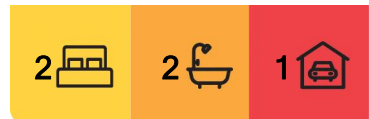
## Masterton, 59 Driving Range Road

### RETIRE WHERE CLASS AND COMFORT MEET!

Blending sophisticated living with Country Club privileges, this elegant, two-double-bedroom townhouse offers lush, apartment-styled living within an exclusive, "Over-50's" environment.

Featuring sumptuous furnishings, refined decor, quality fixtures and fittings, with floor-to-ceiling double-hung drapes, expansive windows and spacious rooms, this is the perfect backdrop to showcase your personal treasures, whilst providing such beautiful ease of living.

With a sleek, contemporary kitchen presiding over generous open-plan living, this is an excellent position from which to entertain. Outdoor flow to north-west wraparound terracing presents the opportunity to follow the sun as desired, enjoying the immaculate low-maintenance grounds surrounding.



**For Sale**  
\$700,000

**View**  
[ljhooker.co.nz/Y7MGES](http://ljhooker.co.nz/Y7MGES)

**Contact**  
**Tira Pollock**  
027 403 3074  
[tpollock.masterton@ljhooker.co.nz](mailto:tpollock.masterton@ljhooker.co.nz)



**Disclaimer:** All information contained therein is gathered from relevant third parties sources. We cannot guarantee or give any warranty about the information provided. Interested parties must rely solely on their own enquiries.

**LJ Hooker Masterton**  
**(06) 378 8666**  
McHattie Realty Ltd MREINZ

You'll appreciate ample storage options thoughtfully provided, including substantial hall cupboards and bedroom wardrobes. The master suite, of course, presents a walk-in-robe and large tiled ensuite with underfloor heating, whilst the stylish guest bathroom is centrally located with plenty of room to embellish with pot plants and accessories, as you choose.

Beautifully presented internal access garaging contains laundry amenities and access to the rear yard for optimal convenience.

Solway Country Estate is a superior lifestyle concept - constructed by the esteemed Westwood Property Group - designed for the discerning buyer looking to live independently amongst a fully landscaped village setting, on a freehold titled site.

As part of the Solway Country Estate one enjoys exclusive membership to the neighbouring country club facilities, (including use of the swimming pool, fitness centre, tennis and squash courts), along with additional benefits including discounts on The Grill Restaurant and Bar and accommodation for extra guests should the need arise. All this within a short walk from your front door.

Needless to say, a property of this calibre warrants immediate attention. Please phone Tira today, for your personal appointment to view.

## More About this Property

<b>Property ID</b>	Y7MGES
<b>Property Type</b>	Townhouse
<b>House Size</b>	147 m <sup>2</sup>
<b>Land Area</b>	295 m <sup>2</sup>
<b>Including</b>	Air Conditioning Deck Dishwasher

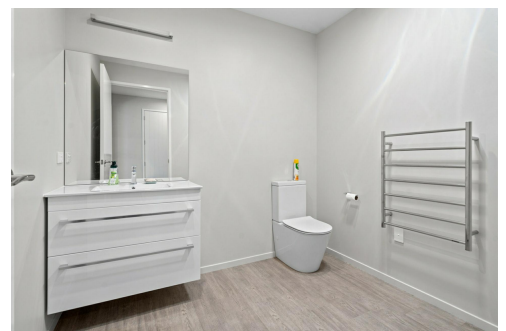
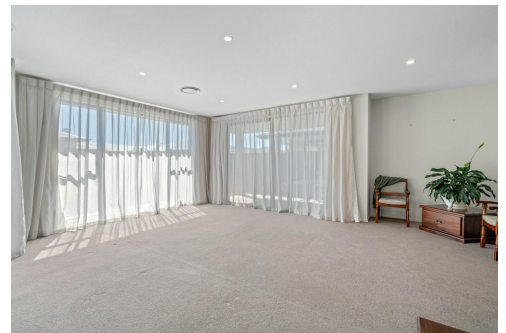
**Licensed Real Estate Agents (REAA2008)**

**Tira Pollock 027 403 3074**

Licensed Sales Specialist & Marketing Consultant |  
tpollock.masterton@ljhooker.co.nz

**LJ Hooker Masterton (06) 378 8666**

McHattie Realty Ltd MREINZ  
4 Renall Street, MASTERTON 5810  
masterton.ljhooker.co.nz | masterton@ljhooker.co.nz



**Disclaimer:** All information contained therein is gathered from relevant third parties sources. We cannot guarantee or give any warranty about the information provided. Interested parties must rely solely on their own enquiries.

**LJ Hooker Masterton**  
**(06) 378 8666**  
McHattie Realty Ltd MREINZ