



238 Neptune Street, Maryborough

SPACIOUS FAMILY HOME

Situated on a level flood free 820m2 allotment in the sought after suburb of Bell Hilltop is this 4 bedroom family home offering everything required for modern day family living. Accommodation in the home comprises of 4 Bedrooms (main with ensuite and walk in robe), two generous living areas, office/study, well appointed kitchen and spacious covered outdoor living area. The home is centrally located close to Schools, Hospital, Convenience Stores and Sporting facilities and Clubs.

Other features include;

1. Security screens and doors
2. Airconditioning to the living area and 3 bedrooms
3. A good sized fenced yard for the kids and pets
4. Caravan/Boat accommodation
5. Attached double bay garage & workshop (electric roller doors)
6. 10.5Kw Solar System with 8Kw Inverter
7. Solar Hot Water
8. Fans throughout

This is practical and comfy family home in a great location that will impress buyers upon inspection.

4  2  2 

FOR SALE

Please Call

AGENTS

Peter Mott
0428 222 654
peter.mott@ljhooker.com.au

AGENCY

LJ Hooker Fraser Coast
07 4191 3500

All information contained therein is gathered from relevant third parties sources.
We cannot guarantee or give any warranty about the information provided.
Interested parties must rely solely on their own enquiries.

 **LJ Hooker**

MORE DETAILS

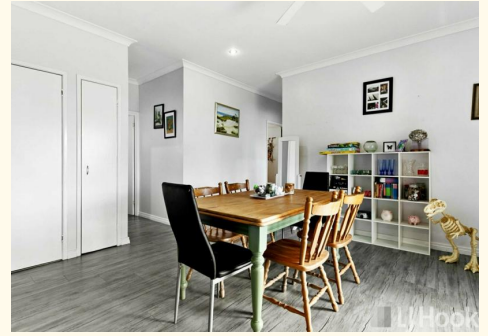
Property ID BANHXD
Property Type House
Land Area 820 m²

Peter Mott 0428 222 654

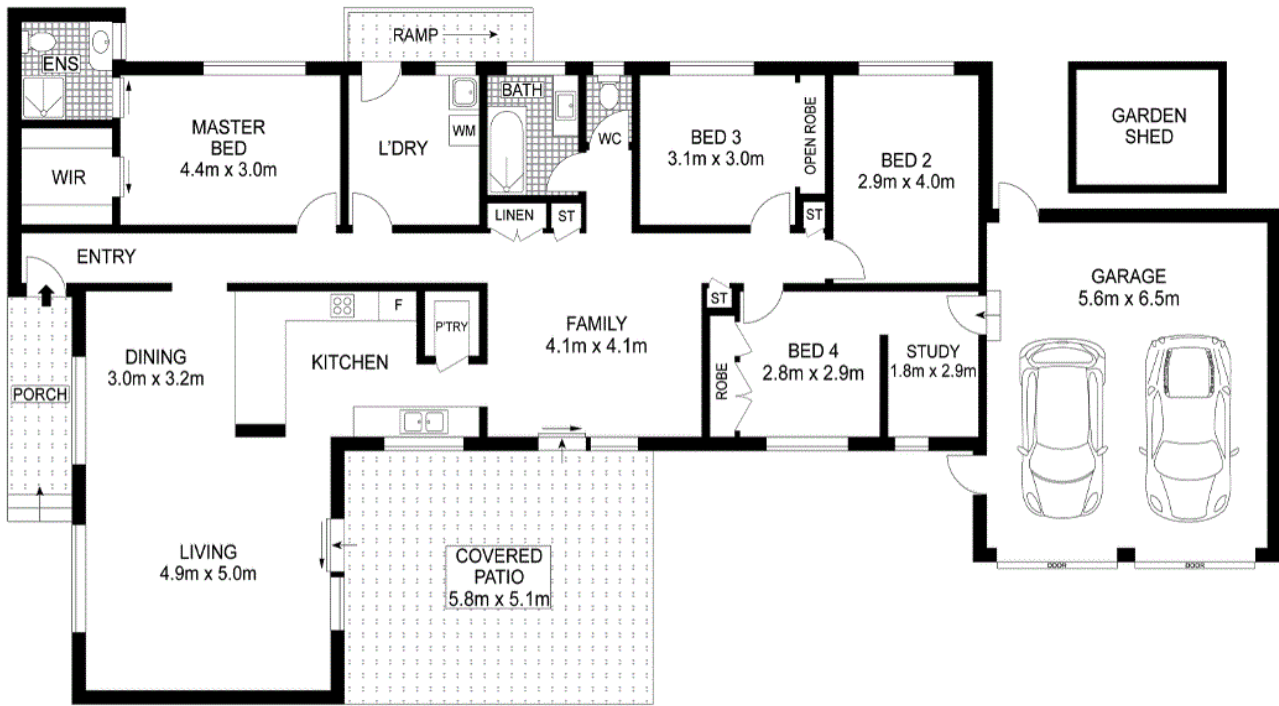
Licensee | peter.mott@ljhooker.com.au

LJ Hooker Fraser Coast 07 4191 3500

331 Esplanade, SCARNESS QLD 4655
frasercoast.ljhooker.com.au | frasercoast@ljhooker.com.au



All information contained therein is gathered from relevant third parties sources.
We cannot guarantee or give any warranty about the information provided.
Interested parties must rely solely on their own enquiries.



238 Neptune Street, Maryborough

This plan is for illustration purposes only. Although dimensions and areas are as accurate as possible, it is conceptual with no guarantees on its accuracy. External parties should rely on their own enquires.

