

Maryborough, 13 Ellena Street

Low Maintenance Investment Opportunity

Here is your chance to secure a low maintenance investment property within walking distance to everything. Consisting of two bedrooms, open plan living and dining area and large kitchen.

The property is on a fully fenced 304m2 corner allotment. Currently tenanted with long term lease in place.

2

1

1

For Sale
Please Call

View
ljhooker.com.au/ASFHXD

Contact
Lance Williams
0401 401 570
lance.williams@ljhooker.com.au

Peter Mott
0428 222 654
peter.mott@ljhooker.com.au



Disclaimer: All information contained therein is gathered from relevant third parties sources. We cannot guarantee or give any warranty about the information provided. Interested parties must rely solely on their own enquiries.

LJ Hooker Fraser Coast
07 4191 3500

More About this Property

Property ID	ASFHXD
Property Type	House
Land Area	304 m ²

Lance Williams 0401 401 570

Sales Consultant | lance.williams@ljhooker.com.au

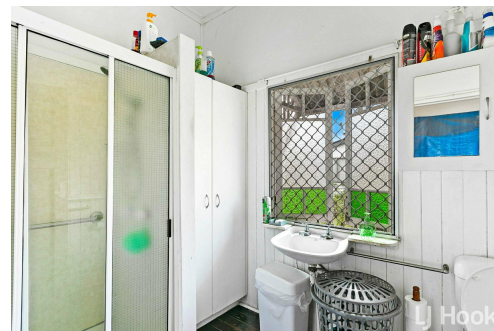
Peter Mott 0428 222 654

Licensee | peter.mott@ljhooker.com.au

LJ Hooker Fraser Coast 07 4191 3500

331 Esplanade, SCARNESS QLD 4655

frasercoast.ljhooker.com.au | frasercoast@ljhooker.com.au



 **LJ Hooker**
FRASER COAST

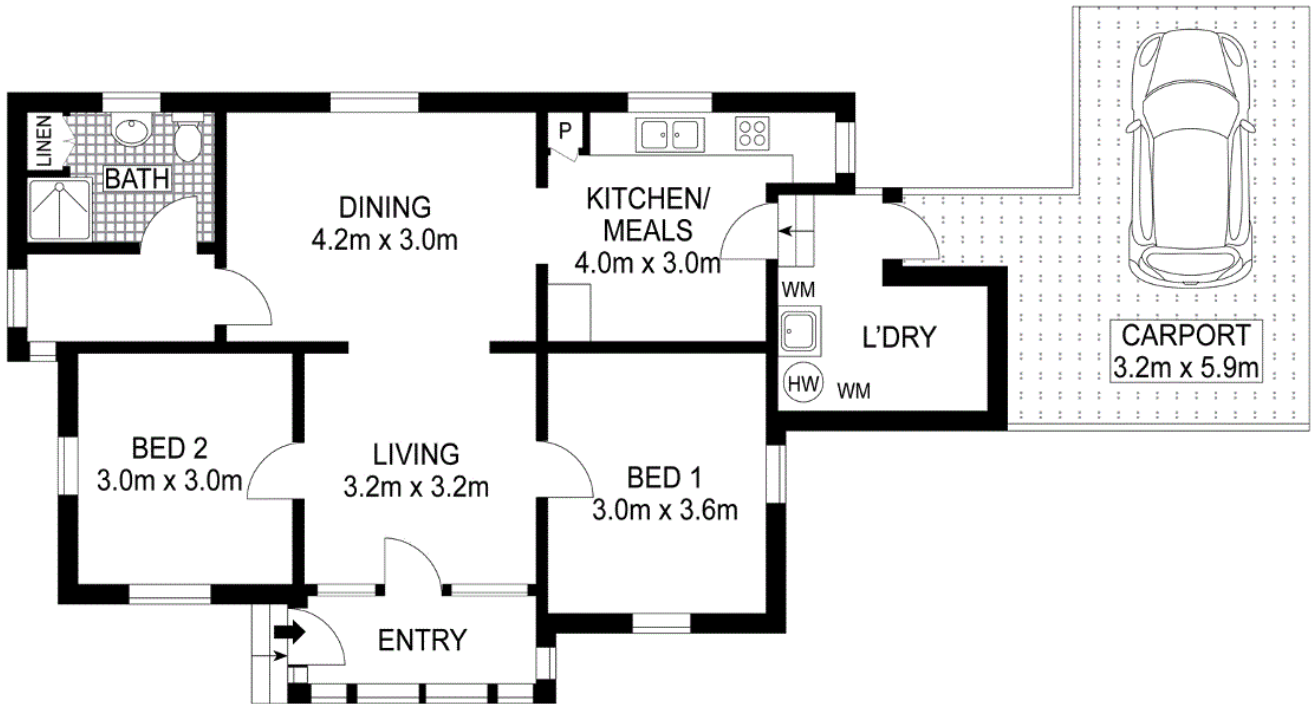
*Limited Photos Available as
this Property is Currently
Tenanted.*

 **LJ Hooker**

Disclaimer: All information contained therein is gathered from relevant third parties sources.

We cannot guarantee or give any warranty about the information provided. Interested parties must rely solely on their own enquiries.

LJ Hooker Fraser Coast
07 4191 3500



13 Ellena Street, Maryborough

This plan is for illustration purposes only. Although dimensions and areas are as accurate as possible, it is conceptual with no guarantees on its accuracy. External parties should rely on their own enquires.



LJ Hooker Fraser Coast
07 4191 3500

Disclaimer: All information contained therein is gathered from relevant third parties sources. We cannot guarantee or give any warranty about the information provided. Interested parties must rely solely on their own enquiries.