
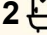



Unit 1/742a Kent Street, Maryborough

UNDER CONTRACT | RARE UPMARKET DUPLEX – CENTRALLY LOCATED

Centrally located close to the CBD, Shopping Centre, Schools, Sporting Facilities and Taverns is this brand new upmarket duplex offering everything required for modern day executive living. Accommodation in the home consists of 3 spacious built in bedrooms (main with ensuite and walk in robe), open plan light and airy living area, study/office nook, lavish bathrooms, well appointed stone benched kitchen with state of the art appliances and a covered alfresco area. This is an upmarket property oozing style and comfort sure to impress the fussiest of buyers. Other improvements include air conditioning, solar system, security screened doors and windows, 2 car lock up accommodation, manicured lawns, landscaped gardens and fencing on all common boundaries.

This is a must-see property that rarely presents itself to our market and an inspection is highly recommended.

3  2  2 

FOR SALE

Please Call

AGENTS

Peter Mott
0428 222 654
peter.mott@ljhooker.com.au

AGENCY

LJ Hooker Fraser Coast
07 4191 3500

All information contained therein is gathered from relevant third parties sources.
We cannot guarantee or give any warranty about the information provided.
Interested parties must rely solely on their own enquiries.



MORE DETAILS

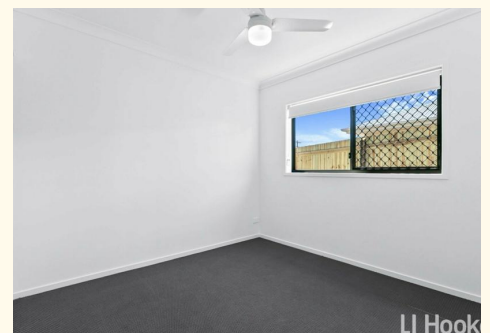
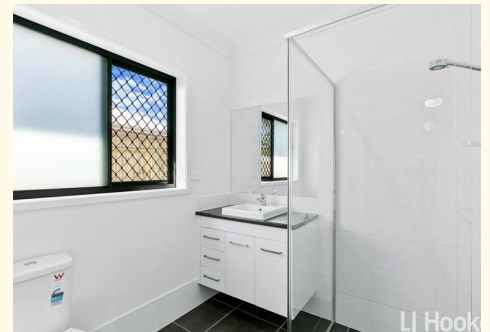
Property ID B3CHXD
Property Type DuplexSemi-detached
Including Air Conditioning
Outdoor Entertaining
Built-in-Robes

Peter Mott 0428 222 654

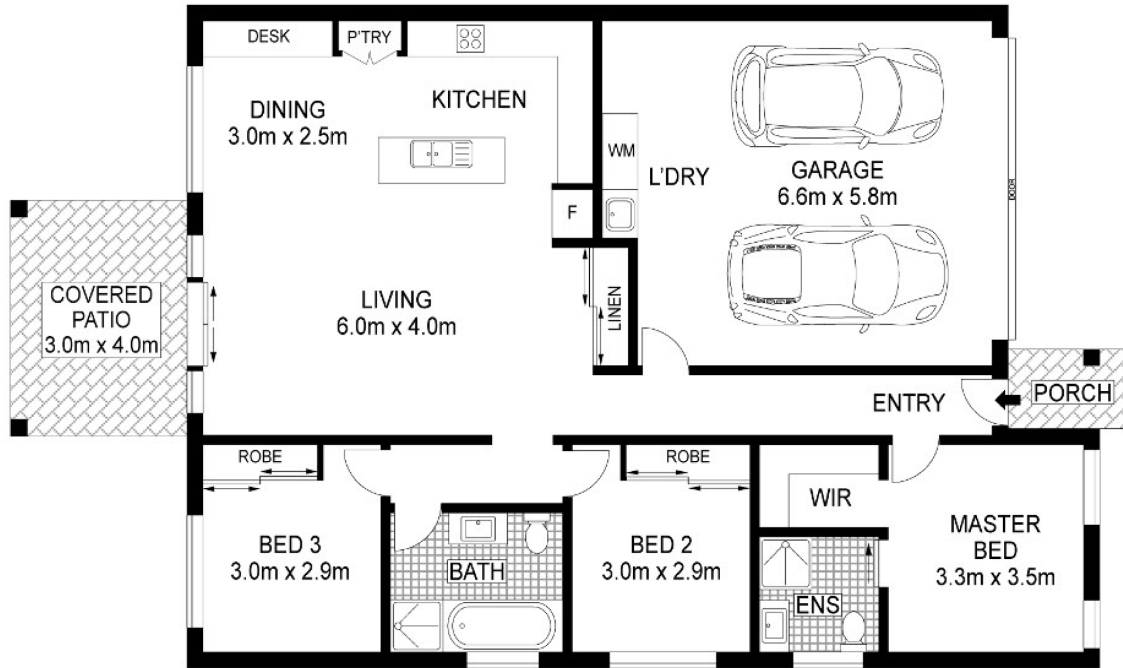
Licensee | peter.mott@ljhooker.com.au

LJ Hooker Fraser Coast 07 4191 3500

331 Esplanade, SCARNESS QLD 4655
frasercoast.ljhooker.com.au | frasercoast@ljhooker.com.au



All information contained therein is gathered from relevant third parties sources.
We cannot guarantee or give any warranty about the information provided.
Interested parties must rely solely on their own enquiries.



1/742 Kent Street, Maryborough

This plan is for illustration purposes only. Although dimensions and areas are as accurate as possible, it is conceptual with no guarantees on its accuracy. External parties should rely on their own enquires.

