



30 Olympia Street, Marsden

A Gold Medal Opportunity on 1,003sqm

Bring Your Tools and Your Imagination

Positioned on a sprawling 1,003sqm flat block, this lowset residence offers a rare combination of immediate comfort and outstanding future potential. Whether you are a first-home buyer looking for a yard for the kids to grow or an investor seeking a high-growth asset in a prime location, this property adapts effortlessly to your vision.

Highlights:

- Rare 1,003sqm flat block offering huge potential for families, investors, or development (STCA).
- Family-friendly location just a 1-minute drive to the playgrounds and BBQ facilities of JJ Smith Park.
- Prime convenience located within 5 minutes of Marsden State High School and Marsden Park Shopping Centre.
- Large undercover rear deck overlooking a private, fully fenced yard.
- Excellent connectivity sitting approximately 10 minutes from Loganlea Station and 30 minutes from Brisbane CBD.

The heart of this property is undoubtedly the land. Flat parcels of this size are increasingly hard to find, providing a generous and level

3 1 1

FOR SALE
Please Call

AGENTS

Shirley Zhong
0489 228 668
shirleyzhong@ljhpp.com.au

AGENCY

LJ Hooker Property Partners
07 3344 0288

All information contained therein is gathered from relevant third parties sources.
We cannot guarantee or give any warranty about the information provided.
Interested parties must rely solely on their own enquiries.

LJ Hooker

foundation suitable for a significant workshop, future extensions, or simply a safe haven for children and pets to run free.

Inside, the home is designed for easy, low-maintenance living. The three-bedroom layout is equipped with air conditioning to ensure year-round comfort, while the inclusion of solar panels contributes to long-term energy efficiency and peace of mind.

The living experience extends seamlessly outdoors to the expansive undercover rear deck. This serves as the ultimate entertaining hub, perfect for weekend gatherings while you keep an eye on the activities in the private, fully fenced backyard. For the DIY enthusiast or handyman, the massive yard and side access offer endless options to explore.

Located in a highly convenient pocket of Marsden, daily life is both simple and connected. You are positioned just a one-minute drive from the lush playgrounds and BBQ facilities of JJ Smith Park. Within five minutes, you can reach the high-performing Marsden State High School and the variety of Marsden Park Shopping Centre. For professionals and commuters, the location is unbeatable, sitting approximately 10 minutes from Loganlea Train Station and Logan Hospital, with a 30-minute drive into Brisbane CBD or 40 minutes to the Gold Coast.

A property of this scale and position is a rare offering in today's market. Whether you are looking to land-bank for the future or create your dream family estate, this 1,003sqm sanctuary delivers on all fronts.

This is one opportunity you won't want to miss. Contact Shirley Zhong today.

All information contained herein is gathered from sources we consider to be reliable. However, we cannot guarantee or give any warranty about the information provided and interested parties must solely rely on their own enquiries.

MORE DETAILS

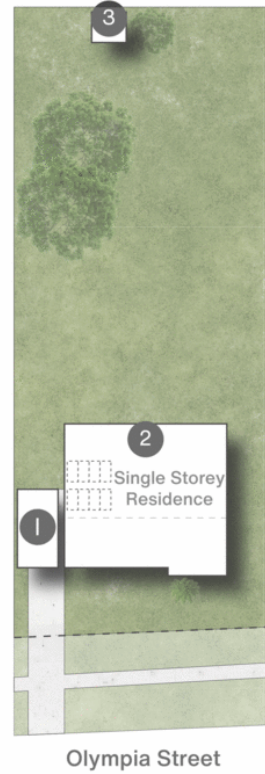
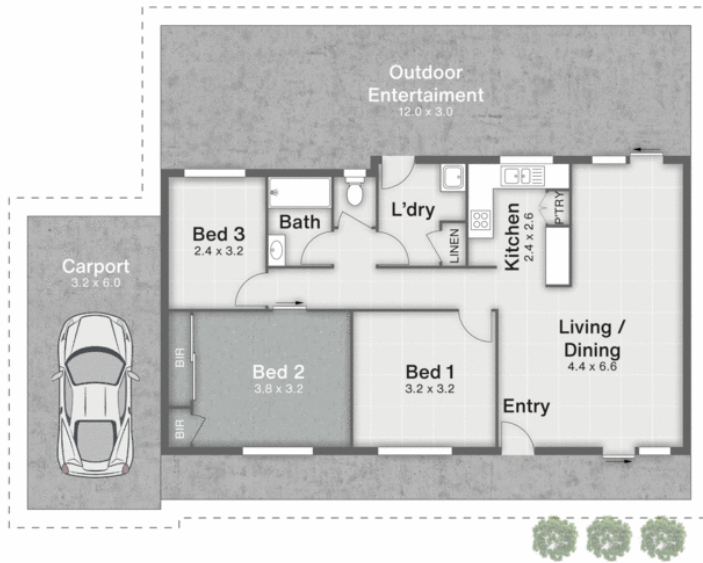
Property ID	B4JDF4R
Property Type	House
Land Area	1003 m2
Including	Air Conditioning Fully Fenced Solar Panels

Shirley Zhong 0489 228 668
Agent | shirleyzhong@ljhpp.com.au

LJ Hooker Property Partners 07 3344 0288
25 Pinelands Road, SUNNYBANK HILLS QLD 4109
propertypartners.ljhooker.com.au | sunnybankhills@ljhpp.com.au



- 1 Carport
- 2 Entertainment
- 3 Shed



30 Olympia Street **MARSDEN**

3 | 1 | 1 | 155m² | 1,003m²

LJ Hooker Property Partners

All dimensions are approximate; they are subject to errors and inaccuracies and no liability will be accepted. Plans are shown for marketing purposes only.