
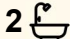



22 Bielsdown Glade, Marsden Park

## Contemporary North East Facing Townhouse in a Vibrant, Thriving Community

Sanjeev Kumar, Kit Patel and the LJ Hooker Schofields team proudly present this impressive north-east facing home, thoughtfully crafted to deliver contemporary style, everyday comfort, and practical living. Perfectly suited to first home buyers and astute investors, this residence offers a seamless blend of elegance and functionality in a highly sought-after setting. From the moment you enter through the wide digital entry door, you are welcomed by a light-filled interior featuring high ceilings, sleek laminate flooring, and modern downlights that enhance the sense of space and warmth.

Designed with both entertaining and relaxed family living in mind, the home showcases quality finishes and carefully considered details throughout. The stylish kitchen is equipped with premium appliances and generous preparation space, while the master suite provides a peaceful retreat complete with a walk-in robe and private ensuite. Luxurious floor-to-ceiling tiling in the bathrooms, ducted air conditioning, and a spacious backyard with pergola further elevate the home's appeal, delivering outstanding comfort and value for modern lifestyles.

3  2  1 

### FOR SALE

Just Listed - \$820,000 - \$870,000

### VIEW

Sat 4th Apr @ 1:30PM - 1:50PM

### AGENTS

Sanjeev Kumar  
0433 289 620  
sanjeev.kumar@ljhooker.com.au

Kit Patel  
0466 412 920  
kit.patel@ljhooker.com.au

### AGENCY

LJ Hooker Schofields | Riverstone  
02 9157 4077

All information contained therein is gathered from relevant third parties sources. We cannot guarantee or give any warranty about the information provided. Interested parties must rely solely on their own enquiries.



#### Property Features:

- North-east facing orientation allowing abundant natural light
- Laminate flooring throughout for a modern, low-maintenance finish
- Wide entry door with digital lock for enhanced security
- High ceilings upstairs and downstairs complemented by stylish downlights
- Spacious living area plus separate dining space ideal for entertaining
- Master bedroom with walk-in robe and private ensuite
- Floor-to-ceiling tiles in main bathroom and ensuite for a premium touch
- Built-in wardrobes in all additional bedrooms
- Ducted reverse-cycle air conditioning for year-round comfort
- Contemporary kitchen with 40mm stone benchtop, stainless steel appliances, gas cooktop, oven, rangehood, and dishwasher
- Video intercom and security alarm system
- Generous backyard with pergola - perfect for outdoor dining and family BBQs

#### Location Highlights:

- Approx. 600m to local bus stop cnr Garfield Road East and Richmond Road
- Approx. 1.8km to Elara Village Shopping Centre
- Approx. 1.8km to local parks and sporting fields
- Approx. 1.5km to Elara Dog Park
- Approx. 3.4km to Lake Melonba
- Approx. 3.6km to Marsden Park Business Park

#### Schools & Education:

- Approx. 900m to Marsden Park Public School
- Approx. 2km to St Luke's Catholic College
- Approx. 3.2km to Melonba High School
- Approx. 5.7km to Riverstone High School
- Approx. 9.4km to Wyndham College

Contact Sanjeev Kumar or Kit Patel at LJ Hooker Schofields today to arrange your private inspection and secure this outstanding opportunity.

- \*\*\*

**DISCLAIMER:** This advertisement contains information provided by third parties. While all care is taken to ensure otherwise, LJ Hooker Schofields | Riverstone does not make any representation as to the accuracy of the information contained in the advertisement, does not accept any responsibility or liability and recommends that any client make their own investigations and inquiries. All images are indicative of the property only.

## MORE DETAILS

Property ID 4X2HXY  
Property Type Townhouse  
Including Ensuite  
Air Conditioning  
Toilets (3)  
Built-in-Robes

### Sanjeev Kumar 0433 289 620

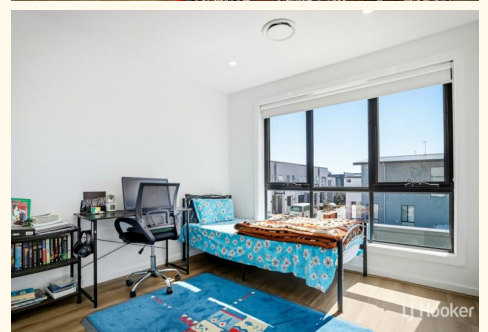
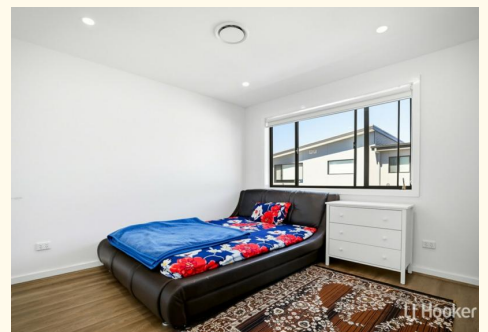
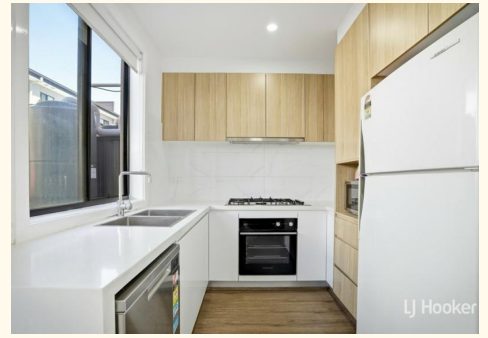
Director | Licensee | [sanjeev.kumar@ljhooker.com.au](mailto:sanjeev.kumar@ljhooker.com.au)

### Kit Patel 0466 412 920

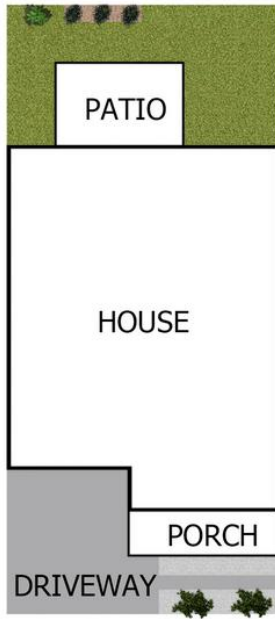
Sales Associate | [kit.patel@ljhooker.com.au](mailto:kit.patel@ljhooker.com.au)

### LJ Hooker Schofields | Riverstone 02 9157 4077

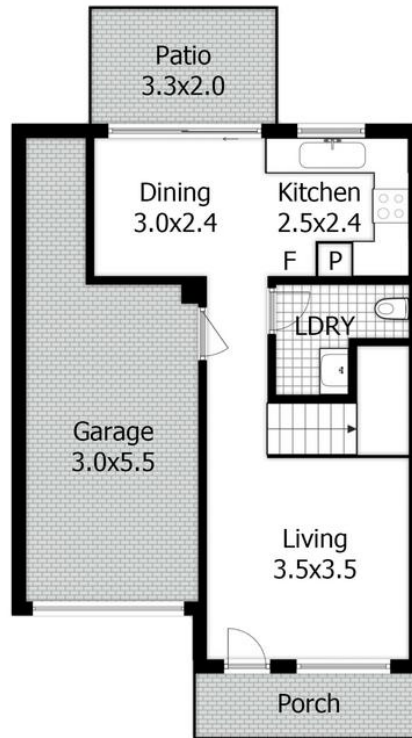
Shop 35, 111 Railway Terrace, SCHOFIELDS NSW 2762  
[schofields.ljhooker.com.au](http://schofields.ljhooker.com.au) | [schofields@ljhooker.com.au](mailto:schofields@ljhooker.com.au)



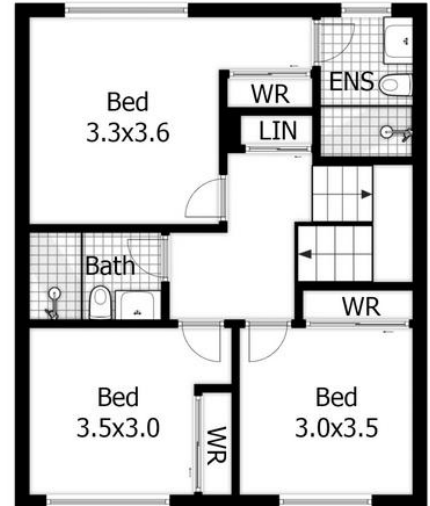
All information contained therein is gathered from relevant third parties sources.  
We cannot guarantee or give any warranty about the information provided.  
Interested parties must rely solely on their own enquiries.



SITE PLAN



GROUND FLOOR



FIRST FLOOR

FLOOR PLAN



**DISCLAIMER:**

This floor plan is used for marketing purpose only and is subject to errors and inaccuracy. The Marketing Agent & N2 Media will not accept any liability. Interested parties should make and rely on their own enquiries.

**22 Bielsdown Glade, Marsden Park**