






9/113-115 Walsh Street, Mareeba

Smart, Secure and Convenient CBD Living

Located in a small, low-maintenance complex in the CBD, this modern unit is the perfect purchase for those looking to downsize or invest.

- + Ground level 2 bedroom, 1 bathroom unit (toilet separate from bathroom)
- + Fully tiled for easy maintenance
- + Built-in wardrobes in bedrooms, plus pantry and linen cupboard
- + Ceiling fans and air-conditioners throughout
- + Galley style kitchen with breakfast bar
- + Bosch oven and electric stovetop with rangehood and dishwasher cavity
- + Internal laundry with bi-fold doors
- + Fully security screened plus front doorbell
- + Solar hot water system
- + Single remote operated garage with carpark space next to the unit
- + Fully fenced grassed yard with garden beds plus a lockable, private courtyard
- + Low Body Corporate Fees
- + Connected to all town services
- + Walking distance to IGA, medical centre, hospital and Mareeba

2  1  1 

FOR SALE
\$370,000

AGENTS

Megan Dale
0489 248 842
megan@ljhookerpropertyplus.com

AGENCY

LJ Hooker Atherton
(07) 4091 3144

All information contained therein is gathered from relevant third parties sources.
We cannot guarantee or give any warranty about the information provided.
Interested parties must rely solely on their own enquiries.

 **LJ Hooker**

State School

+ Mareeba enjoys a warm tropical climate, offering sunny, dry winters and hot summers, perfect for year-round outdoor living and lifestyle-focused buyers.

Make this property yours today - contact Megan Dale on 0489 248 842.

Respectful. Honest. Professional.

MORE DETAILS

Property ID	SC1F1S
Property Type	Unit
House Size	75 m2
Land Area	114 m2
Including	Air Conditioning Courtyard Built-in-Robes Fully Fenced Remote Garage

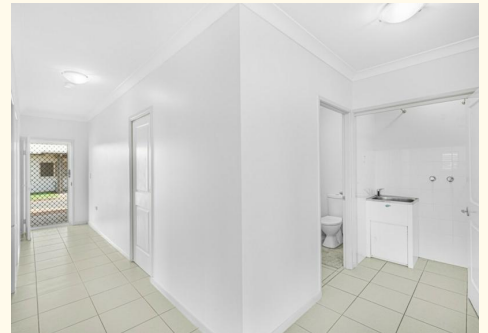
Megan Dale 0489 248 842

Property Sales Consultant | megan@ljhookerpropertyplus.com

LJ Hooker Atherton (07) 4091 3144

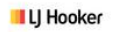
10 Main Street, ATHERTON QLD 4883

atherton.ljhooker.com.au | atherton@ljhatherton.com





TOTAL: 78 m2
 1st floor: 78 m2
 EXCLUDED AREAS: GARAGE: 18 m2, PATIO: 15 m2, PORCH: 4 m2,
 WALLS: 9 m2



FLOOR PLAN CREATED BY CUBICASA APP. MEASUREMENTS DEEMED HIGHLY RELIABLE BUT NOT GUARANTEED.

All information contained therein is gathered from relevant third parties sources.
 We cannot guarantee or give any warranty about the information provided.
 Interested parties must rely solely on their own enquiries.

