



Marchwiël, 19B Stenhouse Drive

Your Perfect Retreat in Mountain View Village

Nestled in the serene Mountain View Village, 19B Stenhouse Drive offers comfortable and convenient living. This charming home features two bedrooms, an open-plan living and dining area, and a functional kitchen. A single garage with internal access, a separate toilet, and a spacious bathroom add to the ease of everyday living.

Mountain View Retirement Village boasts an array of fantastic amenities, including a community centre, library, exercise room, pamper room, workshop, vegetable garden, petanque terrain, mini golf course, astro turf bowling green, and a croquet green - providing endless opportunities for relaxation and recreation.

A minimal monthly fee covers lawn maintenance, rates, and house insurance, ensuring a low-maintenance lifestyle. Don't miss out on this wonderful opportunity!

Features:



Disclaimer: All information contained therein is gathered from relevant third parties sources. We cannot guarantee or give any warranty about the information provided. Interested parties must rely solely on their own enquiries.

2

1

1

For Sale
Negotiation

View
Sat 26th Apr @ 1:15PM - 1:45PM

Contact
Ben Groundwater
027 415 6405
ben.timaru@ljhooker.co.nz

Anja Gordon
021 489 425
anja@ljhtimaru.co.nz

LJ Hooker Timaru
(03) 688 3029
Enting Real Estate Limited

- Heat pump
- Separate toilet
- Internal access
- Single garage
- Two bedrooms

Disclaimer:

This information has been supplied by the owners and Corelogic. LJ Hooker Timaru, Geraldine and Waimate are merely passing over this information as supplied to us. We cannot guarantee its accuracy and reliability as we have not checked, audited or reviewed the information. All intending purchasers are advised to conduct their own due diligence investigation into this information. To the maximum extent permitted by law, we do not accept any responsibility to any part for the accuracy or use of the information herein. Enting Real Estate Limited Licensed (REAA 2008).

More About this Property

Property ID	15DFGTA
Property Type	Retirement
Including	Toilets (1)
Licensed Real Estate Agents (REAA2008)	

Ben Groundwater 027 415 6405

Property Consultant | ben.timaru@ljhooker.co.nz

Anja Gordon 021 489 425

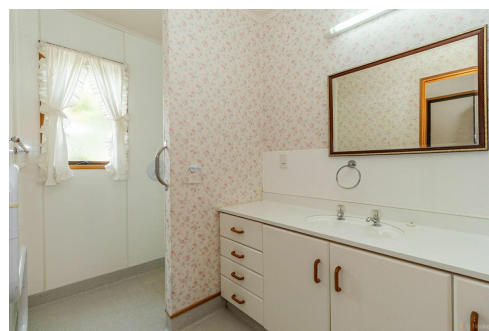
Property Consultant | anja@ljhtimaru.co.nz

LJ Hooker Timaru (03) 688 3029

Enting Real Estate Limited

51 Church Street, TIMARU 7910

timaru.ljhooker.co.nz | timaru@ljhooker.co.nz



Disclaimer: All information contained therein is gathered from relevant third parties sources. We cannot guarantee or give any warranty about the information provided. Interested parties must rely solely on their own enquiries.

LJ Hooker Timaru
(03) 688 3029
 Enting Real Estate Limited