



Marchwiel, 70 Old North Road

Solid start or smart investment

Whether you're searching for your first home or a solid investment, this property ticks all the right boxes. A well-maintained home, built with trusted permanent materials and positioned on a spacious 1100m², fully fenced section. Featuring three double bedrooms, a tidy kitchen/dining area and one bathroom.

A wood-burner will keep you cosy indoors, and you can enjoy a sunny west-facing deck - ideal for afternoon sun, evening BBQs or simply relaxing. A single car garage and carport plus extra off-street parking add to the convenience of this property.

This home is neat, practical, and packed with potential. Contact us to view today!

Features:

- West-facing deck
- Three double bedrooms



Disclaimer: All information contained therein is gathered from relevant third parties sources. We cannot guarantee or give any warranty about the information provided. Interested parties must rely solely on their own enquiries.

3

1

1

For Sale

Enquiries Over \$449,000

View

Sat 19th Jul @ 10:15AM - 10:45AM

Contact

Ben Groundwater

027 415 6405

ben.timaru@ljhooker.co.nz

Joelle Snook

027 844 5432

joelle.timaru@ljhooker.co.nz

LJ Hooker Timaru

(03) 688 3029

Enting Real Estate Limited

- Fire
- Single garage
- Car port
- Off street parking
- Brick

Disclaimer:

This information has been supplied by the owners and Corelogic. LJ Hooker Timaru, Geraldine and Waimate are merely passing over this information as supplied to us. We cannot guarantee its accuracy and reliability as we have not checked, audited or reviewed the information. All intending purchasers are advised to conduct their own due diligence investigation into this information. To the maximum extent permitted by law, we do not accept any responsibility to any part for the accuracy or use of the information herein. Enting Real Estate Limited Licensed (REAA 2008).

More About this Property

| | |
|---|---------|
| Property ID | 15GMGTA |
| Property Type | House |
| House Size | 104 m2 |
| Land Area | 1100 m2 |
| Licensed Real Estate Agents (REAA2008) | |

Ben Groundwater 027 415 6405

Property Consultant | ben.timaru@ljhooker.co.nz

Joelle Snook 027 844 5432

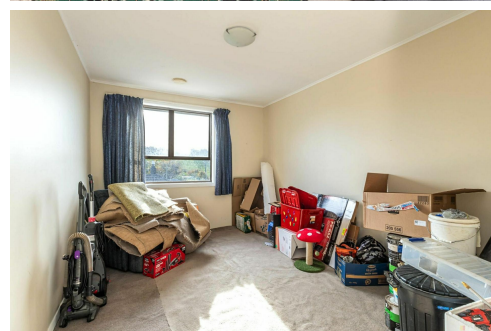
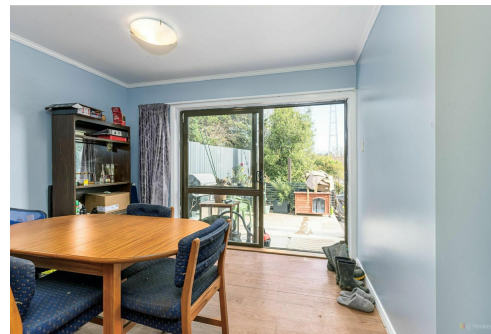
Property Consultant | joelle.timaru@ljhooker.co.nz

LJ Hooker Timaru (03) 688 3029

Enting Real Estate Limited

51 Church Street, TIMARU 7910

timaru.ljhooker.co.nz | timaru@ljhooker.co.nz



Disclaimer: All information contained therein is gathered from relevant third parties sources. We cannot guarantee or give any warranty about the information provided. Interested parties must rely solely on their own enquiries.

LJ Hooker Timaru
(03) 688 3029
 Enting Real Estate Limited