



Marchwiell, 45 Lindsay Street

Double Glazed Red Brick Beauty

Discover everything you need at 45 Lindsay Street! This family-friendly home features two bedrooms + a sunroom (used as a bedroom), a modernised kitchen, large conservatory, double glazing, a double garage, and convenient off-street parking. Ideally located just a short walk from Mountainview High School and St Joseph's Primary School, this home is perfect for families. Get ready to grow those veggies with a great raised garden bed veggie area!

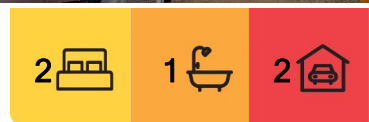
The fully fenced backyard offers a secure area for kids and pets, while the open-plan kitchen and dining area seamlessly connect to a generous lounge with a cozy gas fire and heat pump, creating an inviting space for family nights in.

Features:

- Conservatory
- Double glazed



Disclaimer: All information contained therein is gathered from relevant third parties sources. We cannot guarantee or give any warranty about the information provided. Interested parties must rely solely on their own enquiries.



For Sale
Enquiries Over \$499,000

View
l.jhooker.co.nz/1582GTA

Contact
Ben Groundwater
027 415 6405
ben.timaru@l.jhooker.co.nz
Joelle Snook
027 844 5432
joelle.timaru@l.jhooker.co.nz

LJ Hooker Timaru
(03) 688 3029
Enting Real Estate Limited

- Gas fire
- Heatpump
- Double garage
- Two bedrooms
- Sunroom

Disclaimer:

This information has been supplied by the owners and Corelogic. LJ Hooker Timaru, Geraldine and Waimate are merely passing over this information as supplied to us. We cannot guarantee its accuracy and reliability as we have not checked, audited or reviewed the information. All intending purchasers are advised to conduct their own due diligence investigation into this information. To the maximum extent permitted by law, we do not accept any responsibility to any part for the accuracy or use of the information herein. Enting Real Estate Limited Licensed (REAA 2008).

More About this Property

Property ID	1582GTA
Property Type	House
House Size	130 m2
Land Area	587 m2
Licensed Real Estate Agents (REAA2008)	

Ben Groundwater 027 415 6405

Property Consultant | ben.timaru@ljhooker.co.nz

Joelle Snook 027 844 5432

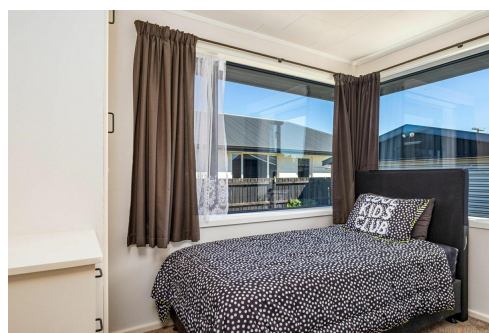
Property Consultant | joelle.timaru@ljhooker.co.nz

LJ Hooker Timaru (03) 688 3029

Enting Real Estate Limited

51 Church Street, TIMARU 7910

timaru.ljhooker.co.nz | timaru@ljhooker.co.nz



Disclaimer: All information contained therein is gathered from relevant third parties sources.

We cannot guarantee or give any warranty about the information provided. Interested parties must rely solely on their own enquiries.

LJ Hooker Timaru

(03) 688 3029

Enting Real Estate Limited