



9/108-110 Mayers Street, Manunda

## Seller Committed Elsewhere!

Absolute low maintenance living... This ground floor spacious two-bedroom apartment is move in ready & presents a fantastic opportunity.

Moments from local shops, medical facilities, chemist, public transport, sporting facilities, restaurants, cafes, primary & high schools, kindergarten, and Cairns CBD.

'Raintrees Gardens' - Positioned back from the street in a quiet complex where residents enjoy expansive green lawns, a central pool, and a relaxed lifestyle in a highly convenient location.

- Open plan tiled living and dining area extend to the covered rear patio
- Central kitchen with ample of storage options, electric cooktop, rangehood and oven
- Each bedroom has built in wardrobes and air conditioning with brand new carpet to bedroom 2
- Main bathroom has walk in shower and separate toilet
- Internal laundry
- Garden shed for storage

Council Rates approximately \$1633.45 1/2 yearly  
Body Corporate \$4223.36 approximately annually

2  1  1 

### FOR SALE

Offers Over \$409,000

### VIEW

Sat 27th Jun @ 1:00PM - 1:30PM

### AGENTS

Kim Ryan  
0410 500 342  
kim.ryan@ljheh.com.au

### AGENCY

LJ Hooker Cairns Edge Hill  
(07) 4053 9999

All information contained therein is gathered from relevant third parties sources.  
We cannot guarantee or give any warranty about the information provided.  
Interested parties must rely solely on their own enquiries.



Make your Move Today!

## MORE DETAILS

Property ID	3YPPFMB
Property Type	Unit
Land Area	61 m2
Including	Air Conditioning Toilets (1) Pool Built-in-Robes

**Kim Ryan 0410 500 342**

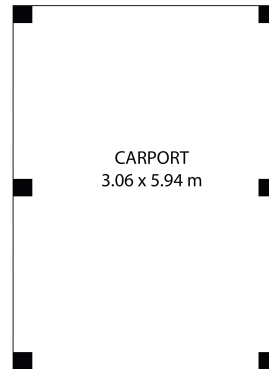
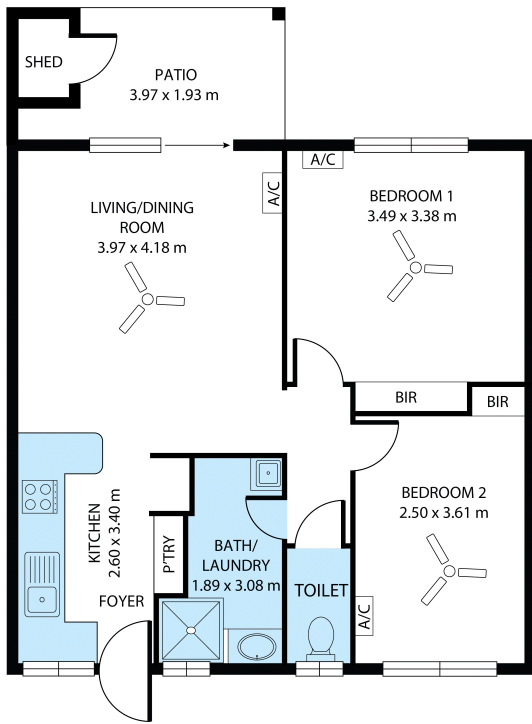
Sales Consultant | [kim.ryan@ljheh.com.au](mailto:kim.ryan@ljheh.com.au)

**LJ Hooker Cairns Edge Hill (07) 4053 9999**

81 - 83 Woodward Street, EDGE HILL QLD 4870  
[cairnsedgehill.ljhooker.com.au](http://cairnsedgehill.ljhooker.com.au) | [cairnsedgehill@ljheh.com.au](mailto:cairnsedgehill@ljheh.com.au)



All information contained therein is gathered from relevant third parties sources.  
We cannot guarantee or give any warranty about the information provided.  
Interested parties must rely solely on their own enquiries.



(NOT IN POSITION)



9/108-110 Mayers St, Manunda, QLD, 4870

Internal Area 61 sqm, Car Space 17 sqm, Patio 17 sqm TOTAL AREA 95sqm approx

Whilst every attempt has been made to ensure the accuracy of the floor plan contained here, measurements of doors, windows, rooms and any other items are approximate and no responsibility is taken for any error, omission, or misstatement. This plan is for illustrative purposes only and should be used as such by any prospective purchaser.