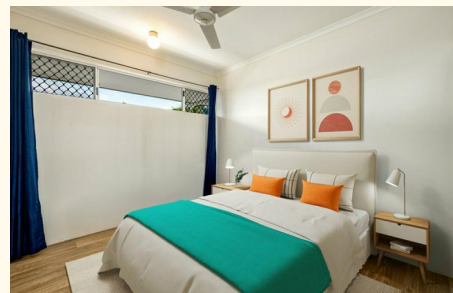




Sold



17/1 Chester Court, Manunda

1 🏠 1 🚿 1 🚗

Spacious One Bedroom | Top Floor | Convenient Location

FOR SALE

Please Call

AGENTS

Aimee Ingram
0457 750 513
a.ingram@ljheh.com.au

AGENCY

LJ Hooker Cairns Edge Hill
(07) 4053 9999

Proudly presenting to the market 17/1 Chester Court. Neat as a pin, this one-bedroom, top floor apartment offers great value, entry level buying. Situated in "Viewmont" a well-maintained complex of 26 one-bedroom apartments, this property is in an ultra-convenient location with most desired amenities within walking distance. Features include:

- Open plan combined living & dining flow direct onto private balcony space with a green, leafy aspect
- Compact kitchen with electric cooking
- Bedroom has built-in wardrobe
- Air conditioning & security screens throughout
- Internal laundry
- Undercover car accommodation
- Resort style pool
- Whitegoods included: Washer, Dryer, Fridge
- Currently vacant for the purpose of sale, rental appraisal \$380 - \$400 per week

BODY CORP: Approx. \$2685.00 per annum
COUNCIL RATES: Approx. \$3200.00 per annum

Within walking distance from Raintrees Shopping Village, private &

All information contained therein is gathered from relevant third parties sources. We cannot guarantee or give any warranty about the information provided. Interested parties must rely solely on their own enquiries.



public primary schools and public transport. Only 4km from the Cairns CBD and Esplanade Precinct, Cairns Central Shopping Centre, Cairns Base Hospital. Call to arrange an inspection today.

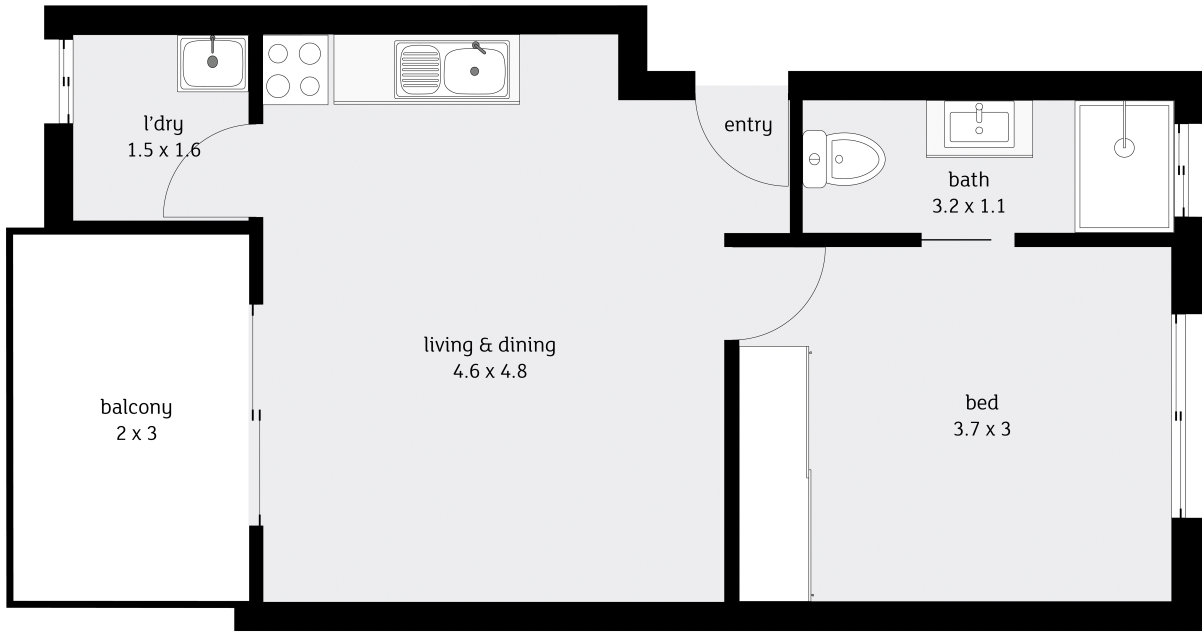
MORE DETAILS

Property ID	3YAPFMB
Property Type	Apartment
Land Area	49 m2
Including	Air Conditioning
	Pool
	Balcony
	Built-in-Robes

Aimee Ingram 0457 750 513
Sales Consultant | a.ingram@ljheh.com.au

LJ Hooker Cairns Edge Hill (07) 4053 9999
81 - 83 Woodward Street, EDGE HILL QLD 4870
cairnsedgehill.ljhooker.com.au | cairnsedgehill@ljheh.com.au





Whilst LJ Hooker Edge Hill has made every effort to ensure the accuracy of the floorplan contained here, measurements are approximate and no responsibility is taken for any error, omission or mis-statement. This plan is for illustration purposes only.